

CUSTOMER SAFETY TRAINING GUIDE

BOMBARDIER® TRAXTER™ MAX ATV



WARNING

Read this guide thoroughly.
It contains important safety information.
Minimum recommended age:
Operator: 16 years old. Passenger: 12 years old.



2 1 9 0 0 0 2 8 5

TABLE OF CONTENTS

INTRODUCTION	1
SECTION I - GENERAL SAFETY INFORMATION	2
SECTION II - BOMBARDIER TRAXTER MAX SAFETY VIDEO	4
SECTION III - OPERATOR'S GUIDE REVIEW	6
SECTION IV - HANDS-ON RIDING	7
DRIVING MANEUVER LIST	8
DEALER CHECK LIST	12
DEALER CHECK LIST (CONTINUED)	13
DEALER CHECK LIST (CONTINUED)	14
DEALER CHECK LIST (CONTINUED)	15

INTRODUCTION

OBJECTIVE

The objective of this course is to give the Bombardier® Traxter™ Max ATV owner the information required to operate a Traxter Max safely. The course will be offered to all Traxter Max buyers, and members of their immediate families. Successful completion of the training course is required to complete the sale of the Traxter Max.

The Traxter Max allows you to ride with one passenger. Remember, you should never allow passengers on an ATV not specifically designed for such use.

SECTIONS COVERED

1. General Safety Information
2. Bombardier Traxter Max Safety Video
3. *Operator's Guide* Review
4. Hands-on Riding

TIME REQUIRED

As required, depending on trainee's experience and skills.

SECTION I - GENERAL SAFETY INFORMATION

OBJECTIVE

The purpose of this section is to:

- A) Explain why this safety training is important
- B) Discuss CPSC (Consumer Product Safety Commission) Injury and Death Statistics
- C) Discuss Bombardier's age and size recommendation
- D) Discuss what protective clothing should be worn by the operator and the passenger while riding the Traxter Max
- E) Discuss when an operator should begin to ride with a passenger
- F) Discuss local, state and federal laws pertaining to ATV use
- G) Discuss the areas where you can ride

OUTLINE

A) This course is provided:

- To make riding more enjoyable to you and your passenger
- To reduce the chance of injury and death to you and your passenger through safety and risk awareness
 1. What could happen when proper safety and risk precautions are not followed
 2. Why you should not carry more than one passenger on your Traxter Max
 3. Why you and your passenger should keep your feet on your respective footrests at all times, and why your passenger should always hold the grab handles while riding
 4. Why you and your passenger should not use alcohol or drugs prior to operating your vehicle

5. Why you should not ride on paved surfaces

B) CPSC statistics

- The CPSC has published statistics of injury and death suffered by riders of ATVs during the last 5 years (January 1997-December 2001):
 1. 417,200 ATV-related injuries
 2. 1,463 ATV-related deaths

C) Age and size requirements for the Traxter Max

- No one under the age of 16 should operate a Traxter Max
- No passenger under 12 should be allowed on a Traxter Max. Regardless of age, your passenger should also be able to firmly plant his/her feet on footrests and securely grasp the grab handles
- Do not allow a person unfamiliar with your Traxter Max to operate it

D) Protective clothing that should be worn by the driver and passenger while riding the Traxter Max

- Helmet (DOT approved)
 1. Full Face
 2. $\frac{3}{4}$ Shell
 3. Passenger's helmet should have a chin guard
- Protective boots
- Riding Gloves
- Eye Protection (Goggles)
- Long Sleeve Shirt
- Full Length Pants
- Elbow Pads (Optional)
- Knee Pads (Optional)
- Kidney Belt (Optional)

E) Riding with a passenger

- Before riding with a passenger, the operator should first become highly familiar with the operation of the Traxter Max
- Once ready, the operator should begin riding with a passenger at very low speed and on familiar terrain

F) ATV-related local, state and federal laws

- Discuss those laws

G) Areas where you cannot ride your Traxter Max

Basic rules are:

- Do not ride on private land without the owner's permission
- Do not ride in areas where your Traxter Max might cause permanent damage
- Do not attempt maneuvers that exceed your ability
- Always know where you are and where you are going

EXPECTED RESULTS

Upon completion of this section, you should:

- Know the current injury and death statistics as published by the CPSC
- Know Bombardier's policy toward drivers under 16 years of age, and passengers under 12 years of age
- Know what clothing and protective gear should be worn by you and your passenger while riding
- Know the local, state and federal laws applying to ATV operation
- Know basic rules of where and how not to ride

SECTION II - BOMBARDIER TRAXTER MAX SAFETY VIDEO

OBJECTIVE

The purpose of this section is to:

- A) indicate guidelines prior to viewing the Bombardier Traxter Max Safety Video
- B) present safety-related information through the Bombardier Traxter Max Safety Video
- C) answer all questions that may remain at the end through a recap

OUTLINE

A) Guidelines

Ask to stop the video at any point if a question should arise. Repeat the video if necessary, if you are uncertain on any points

B) Safety-related information

Clothing

Refer to section I

Age Recommendation

No operator under 16/no passenger under 12 or too small to reach the footrests or the grab handles

Operator's Guide Usage

You must read and understand the *Operator's Guide*

Pre-operating check

You must do a pre-operating check to assure the vehicle is in safe and proper working order everytime you use it

Body posture

You and your passenger must position your body weight to lessen the hazard of tipping over. You and your passenger must keep your feet on your respective footrests at all times, and your passenger should always hold the grab handles.

Starting procedure

The proper method for starting the vehicle

Uphill and downhill riding

The proper method of travelling up and down hills with or without a passenger

Backing up

The proper method for backing up

Sidehilling

The proper method for traversing a hill with or without a passenger

1. Avoid doing it
2. Weight transfer
3. Emergency dismount

Riding with a passenger or load

Handling and braking ability changes when carrying a passenger or load

Water crossing

Use caution while crossing water.

Vehicle transportation

Proper method for loading and preparing the Traxter Max to be transported

1. Lock brakes
2. Transmission in gear
3. Turn off fuel
4. Make sure fuel and oil caps are tight
5. Secure front and rear of machine

Law observance

Refer to section I

C) Recap

- Questions and answers
- Review of the CPSC injury and death data
- Review of safety messages, such as wearing protective head gear and clothing

EXPECTED RESULTS

Upon completion of this section, you should:

- Know the content of the Bombardier Traxter Max Safety Video

SECTION III - OPERATOR'S GUIDE REVIEW

OBJECTIVE

The purpose of this section is to:

- A) Emphasize the importance of observing the warning and caution symbols
- B) Review the Operator's Guide and be familiar with the important points of each section

OUTLINE

A) Warning and caution symbols

- Note the warning and caution symbols in each section and what they are warning about; know the consequences of not following these warnings

B) Operator's Guide Review

- Note the important points of the Operator's Guide:
 1. Table of Contents
 2. Notice Page
 3. Special Safety Messages
 4. Operations Safety Warnings
 5. Riding Tips
 6. Warning Labels
 7. Vehicle Identification Number
 8. Controls/Instrument/Equipment
 9. Break-In Period
 10. Pre-Operation Check
 11. Operating Instructions
 12. Special Procedures
 13. Post-Operating Care
 14. Cargo and Transportation
 15. Maintenance

EXPECTED RESULTS

Upon completion of this section, you should:

- Be familiar with the need to review the *Operator's Guide* frequently
- Know the meaning of the warning and caution symbols in the *Operator's Guide* and what they refer to
- Know all sections in the *Operator's Guide* and what they refer to

SECTION IV - HANDS-ON RIDING

OBJECTIVE

The purpose of this section is to:

- A) Familiarize you with the pre-operation check
- B) Remind you about the protective clothing that should be worn by you and your passenger while riding the Traxter Max
- C) Have you drive the Traxter Max and perform all of the basic maneuvers

OUTLINE

A) Pre-operation checks

- Perform pre-operation check on the Traxter Max, using the checklist from the *Operator's Guide* and identify all controls

B) Protective clothing

- Wear the proper clothing when riding the Traxter Max:
 1. Helmet (with a chin guard for the passenger)
 2. Riding boots
 3. Gloves
 4. Eye protection
 5. Long sleeve shirt
 6. Long Pants
 7. Elbow pads (Optional)
 8. Knee pads (Optional)
 9. Kidney belt (Optional)

C) Basic maneuvers

- Drive the course performing all of the basic maneuvers described in the attached **Driving Maneuver List**, without a passenger
 1. Dealer representative demonstrates each of the maneuvers first
 2. You perform the maneuver without passenger, after being shown how
 3. Dealer representative checks off the scoring chart when you have completed the maneuvers satisfactorily
 4. Dealer representative and you continue with the maneuvers one at a time until all have been performed, and checked off

EXPECTED RESULTS

Upon completion of this section, you should:

- Know how to do a pre-operation check
- Know the proper clothing to be worn by you and the passenger while riding your Traxter Max
- Have performed all of the basic riding maneuvers on the riding course

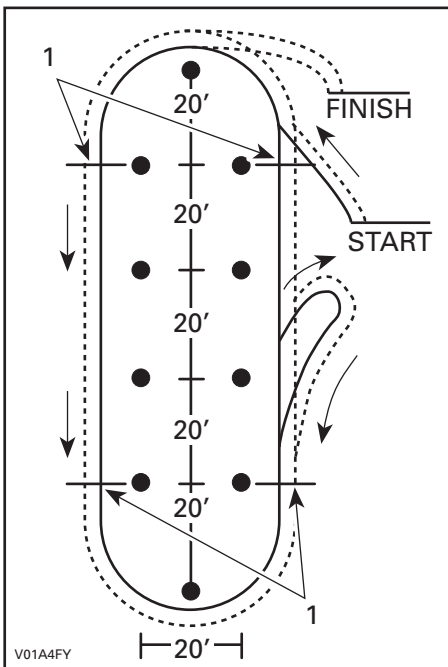
DRIVING MANEUVER LIST

Hands-on riding practice should incorporate the maneuvers described below.

Trainees are required to perform a minimum number of repetitions of each of the eight driving maneuvers. The person giving the training must demonstrate each maneuver and then have the trainee repeat the following minimum number of repetitions.

Maneuver # 1

Starting and stopping practice on a large oval course (minimum repetition: once counterclockwise and once clockwise).

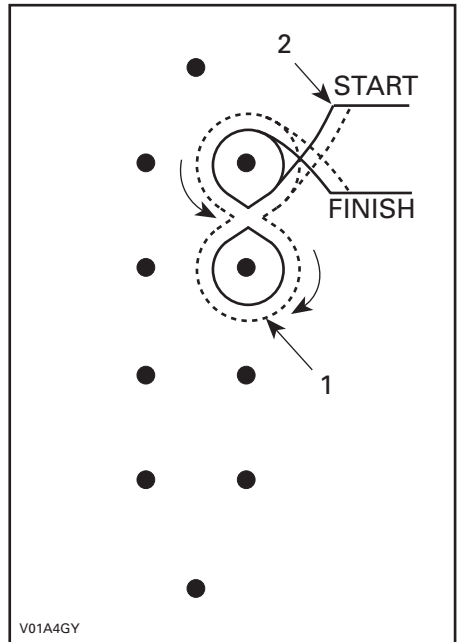


TYPICAL

1. Stop here

Maneuver # 2

Turning left and right - figure 8's (minimum repetition: three times).

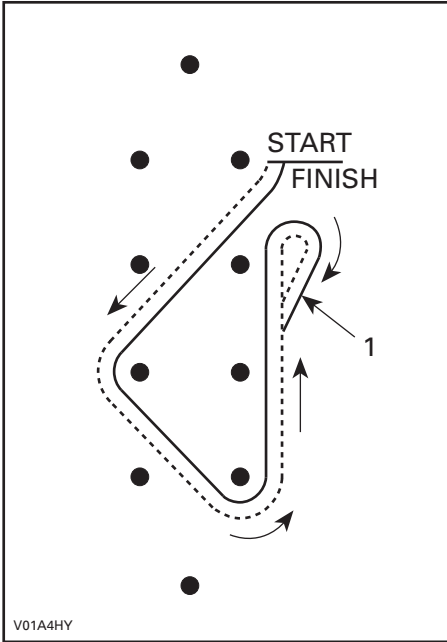


TYPICAL

1. 2 laps or more
2. Finish of 1st maneuver

Maneuver # 3

Sharp turns less than 90° - left and right. Corners 90 degrees and less than 90 degrees (minimum repetition: two clockwise and two counterclockwise).

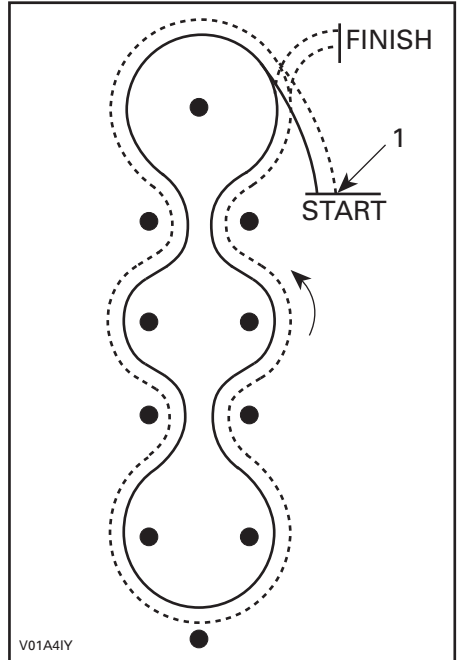


TYPICAL

1. Reverse range

Maneuver # 4

Slalom (minimum repetition: three times).

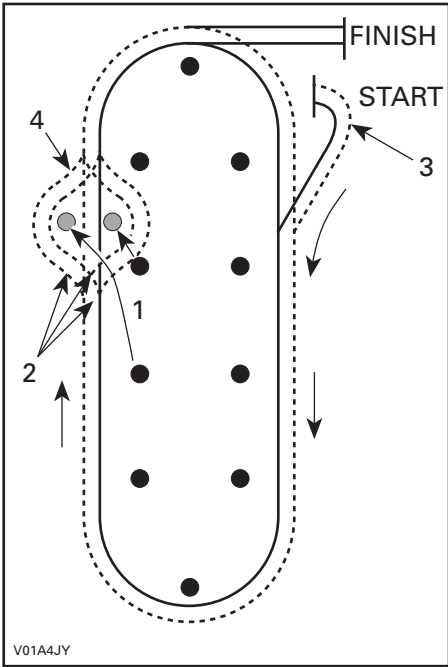


TYPICAL

1. Finish of last maneuver

Maneuver # 5

Quick stop: large oval with panic maneuver (minimum repetition: two times).

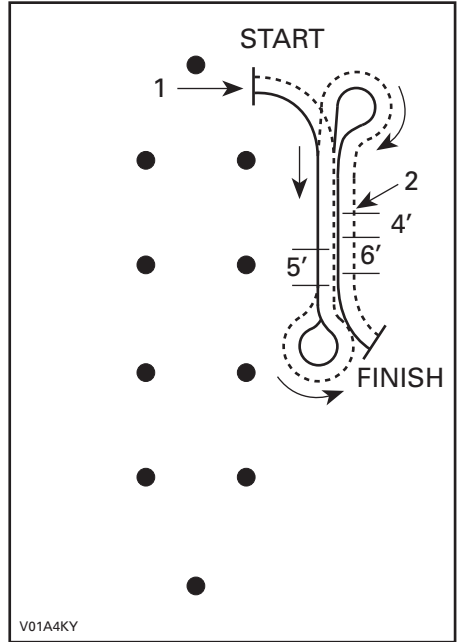


TYPICAL

1. Move 2 cones
2. Instructor specifies left, right or straight on command
3. Finish of last maneuver
4. Instructor signal panic turnout

Maneuver # 6

Riding over obstacle (minimum repetition: once with left wheels, once with right wheels, and once with both wheels).

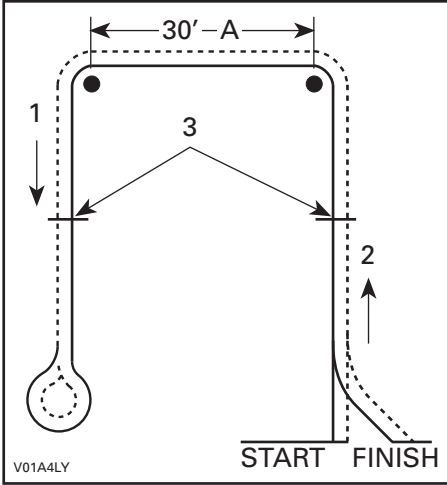


TYPICAL

1. Finish of last maneuver
2. Obstacle

Maneuver # 7

Traversing hills (minimum repetition: once each direction).

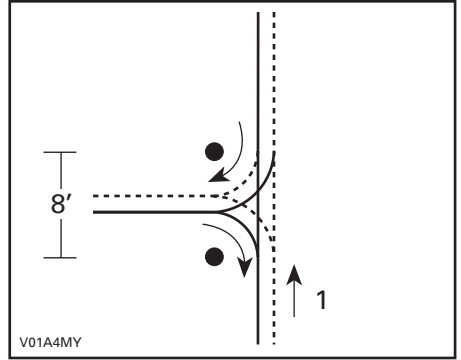


TYPICAL

- 1. Down
- 2. Uphill
- 3. Stop and start here
- A. Traverse

Maneuver # 8

K-turn and U-turn (minimum repetition: one time).



TYPICAL — K-TURN ON HILL WHERE AND IF AVAILABLE

- 1. Uphill

DEALER CHECK LIST

Name of Traxter Max Purchaser: _____

Name of dealer representative: _____

Date: _____

IMPORTANT: This Traxter Max Safety Training Course is mandatory and must be completed for any new Traxter Max purchaser.

Random checks will be performed by a third party agency to ensure the training is being performed.

Failure to perform the required training may lead to disciplinary sanctions from Bombardier, including the non renewal or termination of your dealership.

If you would like further information on the Traxter Max Safety Training course, please contact the service department at 1-800-366-6992 in the US or 1-800-361-9980 in Canada.

INTRODUCTION:

- Remit to your trainee a copy of the Customer Safety Training Guide (P/N 219 100 167), which is found with the operators guide in the storage compartment
- Make sure your trainee carefully reads the content of the Customer Safety Training Guide

SECTION I: GENERAL SAFETY INFORMATION

- Explain the reason for safety training
- Discuss CPSC Injury and Death Statistics
- Discuss Bombardier's age and size recommendations
- Discuss what protective clothing should be worn by the operator and the passenger while riding the Traxter Max
- Discuss local, state and federal laws pertaining to ATV use
- Discuss what areas are acceptable to ride in

SECTION II: BOMBARDIER TRAXTER MAX SAFETY VIDEO

- Review the Bombardier Traxter Max Safety Video with your trainee. Make sure to answer any questions your trainee may have

DEALER CHECK LIST (CONTINUED)

SECTION III: OPERATOR'S GUIDE REVIEW

- Review the *Operator's Guide* with your trainee. Emphasize the need for periodic and frequent reviews of the guide
- Draw trainee's attention to the warning and caution symbols, and explain their meaning

SECTION IV: HANDS-ON RIDING

- Perform the pre-operation check with your trainee
- Remind your trainee about the protective clothing that should be worn by driver and passenger while riding the Traxter Max
- Demonstrate each of the maneuvers to the trainee
- Have the trainee drive the Traxter Max and perform all of the following basic maneuvers

1) Starting and stopping

Starting and stopping practice on a large oval course (minimum repetition: once counterclockwise and once clockwise)

1. Should have a starting area long enough so the operator has enough time to think about the next maneuver before he has to execute it.
2. Should incorporate a braking area at least 30 ft. long in which the trainee will have to negotiate a stop, in a straight line, from various speeds.

2) Turning

Turning left and right - figure 8's (minimum repetition: three times)

3) Sharp turns

Sharp turns less than 90° - left and right. Corners: 90 degrees and less than 90 degrees (minimum repetition: two clockwise and two counterclockwise)

4) Slalom

Slalom at least 4 markers - each 20 ft. apart (minimum repetition: three times)

5) Quick stop

Quick stop as used in article I above. Large oval with panic maneuver (minimum repetition: two times)

6) Riding over obstacles

Riding over obstacles - 4x4 pieces of wood should be placed in vehicle's path so rider can drive over them (minimum repetition: once with left wheels, once with right wheels, and once with both wheels)

DEALER CHECK LIST (CONTINUED)

7) Traversing hills

First, remind the trainee that sidehilling should be avoided if possible.

Where there is a hill available of approximately 8% incline or less, the course should be set up to use the hill to practice traversing (minimum repetition: once each direction). If there is no hill available, make sure to review the description of the maneuver in the *Operator's Guide* with the trainee.

8) K-turn and U-turn

Where there is a hill available of approximately 8% incline or less, the course should be set up to use the hill to practice K-turns and U-turns (minimum repetition: one time). If there is no hill available, make sure to review the description of the maneuver in the *Operator's Guide* with the trainee.

- | |
|--|
| <ul style="list-style-type: none"><input type="checkbox"/> Complete checklist and score card. Purchaser and dealer representative must sign.<input type="checkbox"/> Copy checklist and score card for your records |
|--|

DEALER CHECK LIST (CONTINUED)

TRAINEE'S SCORING CHART

Exercise	Pass	Fail
1. Starting and stopping		
2. Turning		
3. Sharp turns		
4. Slalom		
5. Quick stops		
6. Riding over obstacles		
7. Traversing hills (if there is no hill available, make sure to review the description of the maneuver in the <i>Operator's Guide</i> with the trainee)		
8. K-turn and U-turn (if there is no hill available, make sure to review the description of the maneuver in the <i>Operator's Guide</i> with the trainee)		
9. Instructor comments:		

NOTE : The dealer must make a photocopy of this scoring card for his/her record.

Signature of Traxter Max Purchaser: _____

Signature of dealer representative: _____

Date: _____



WARNING

THIS VEHICLE CAN BE HAZARDOUS TO OPERATE.

A collision or rollover can occur quickly, even during routine manoeuvres such as turning and driving on hills or over obstacles, if you fail to take proper precautions.

SEVERE INJURY OR DEATH can result if you do not follow these instructions:

- **BEFORE YOU OPERATE THIS VEHICLE, READ THE OPERATOR'S GUIDE AND ALL ON-PRODUCT LABELS.**
- **NEVER OPERATE THIS VEHICLE, WITHOUT PROPER INSTRUCTION.** New owners should complete a certified training course.
- **NEVER CARRY MORE THAN ONE PASSENGER.** You increase your risk of losing control if you carry more than one passenger.
- **NEVER OPERATE THIS VEHICLE ON A PAVED SURFACE.** You increase your risk of losing control if you operate this vehicle on pavement.
- **NEVER OPERATE THIS VEHICLE ON PUBLIC ROADS.** You can collide with another vehicle if you operate this vehicle on a public road.
- **OPERATOR AND PASSENGER SHOULD ALWAYS WEAR AN APPROVED HELMET,** eye protection, and protective clothing.
- **NEVER CONSUME ALCOHOL OR DRUGS** before or while operating this vehicle.
- **NEVER OPERATE THIS VEHICLE AT EXCESSIVE SPEEDS.** You increase your risk of losing control if you operate this vehicle at speeds too fast for the terrain, visibility conditions, or your experience.
- **NEVER ATTEMPT WHEELIES, JUMPS, OR OTHER STUNTS.**