

operator's manual

SUPPLEMENT FOR MODEL: 3230

REFERENCE CONTRACT: DAA E07-86-C-2365

This correction sheet must be used in conjunction with the 1987 Skandic R operator's manual (P/N 414 5952 00)

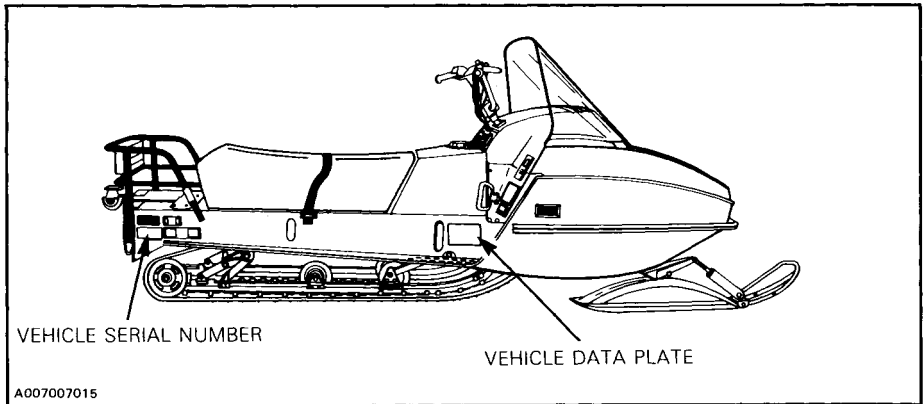
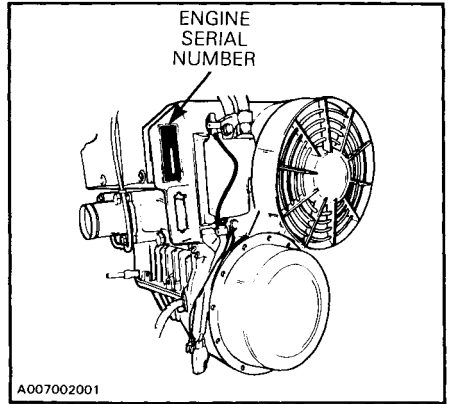
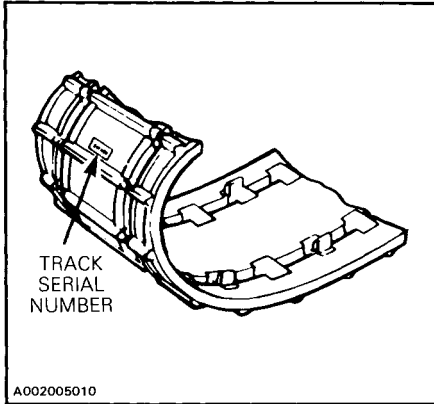
SKANDIC® R

1987

P/N 414 6329 00

HOW TO IDENTIFY YOUR SNOWMOBILE

The main components of your snowmobile (engine, track and frame) are identified by different serial numbers. It may sometimes become necessary to locate these numbers for warranty purposes or to trace your snowmobile in the event of theft.



Vehicle serial number identification meaning.

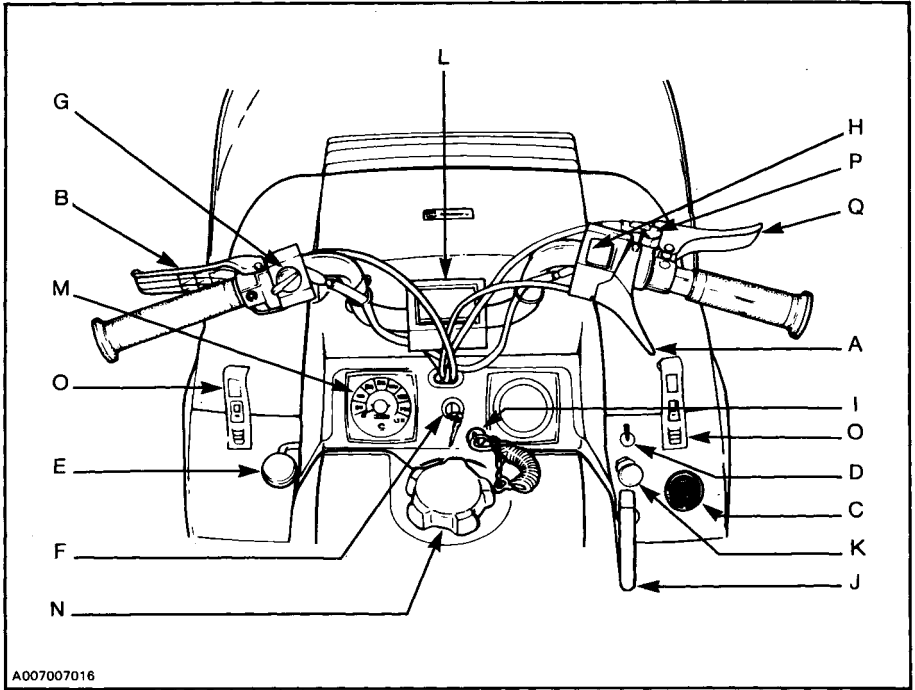
0000 00000

Model number Vehicle number

A000000013

○ **NOTE:** We strongly recommend that you take note of all the serial numbers on your vehicle and supply them to your insurance company. It will surely help in the event a snowmobile is stolen.

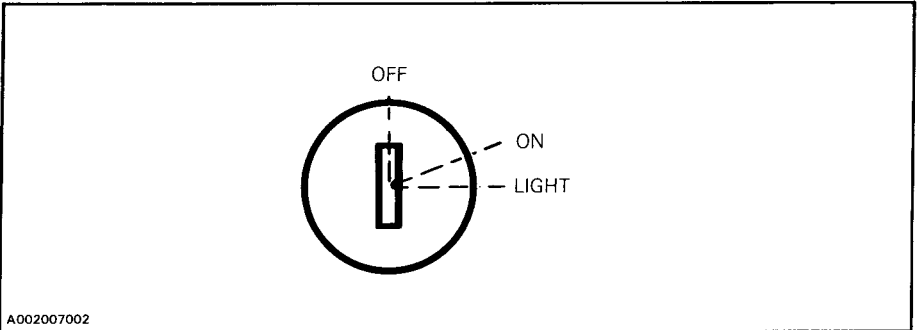
CONTROLS/ INSTRUMENTS



A007007016

- A) Throttle Lever
- B) Brake Lever
- C) Hour Meter
- D) Black Out Switch
- E) Gear Shift Lever
- F) Ignition/Light Switch
- G) Headlamp Dimmer Switch
- H) Emergency Cut-Out Switch
- I) Tether Cut-Out Switch
- J) Rewind Starter Handle
- K) Primer
- L) Adjustable Steering Handle
- M) Speedometer
- N) Fuel Gauge/Tank Cap
- O) Hood Opening
- P) Parking Brake Lever Restraining device
- Q) Parking Brake Lever

C) Ignition/Light Switch



Key operated, 3 position switch. To start engine, first turn key clockwise to ON position. To stop engine, turn key counter-clockwise to OFF position.

To put lights on while engine is running turn key to LIGHT position.

D) Black Out Switch

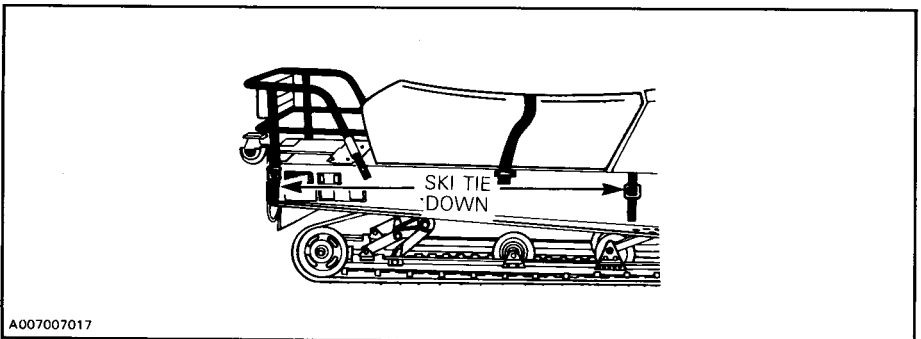
The black out switch turns off the stoplamp circuit.

N) Hour meter

The hour meter indicates the total number of engine running hours.

Ski Tie Down

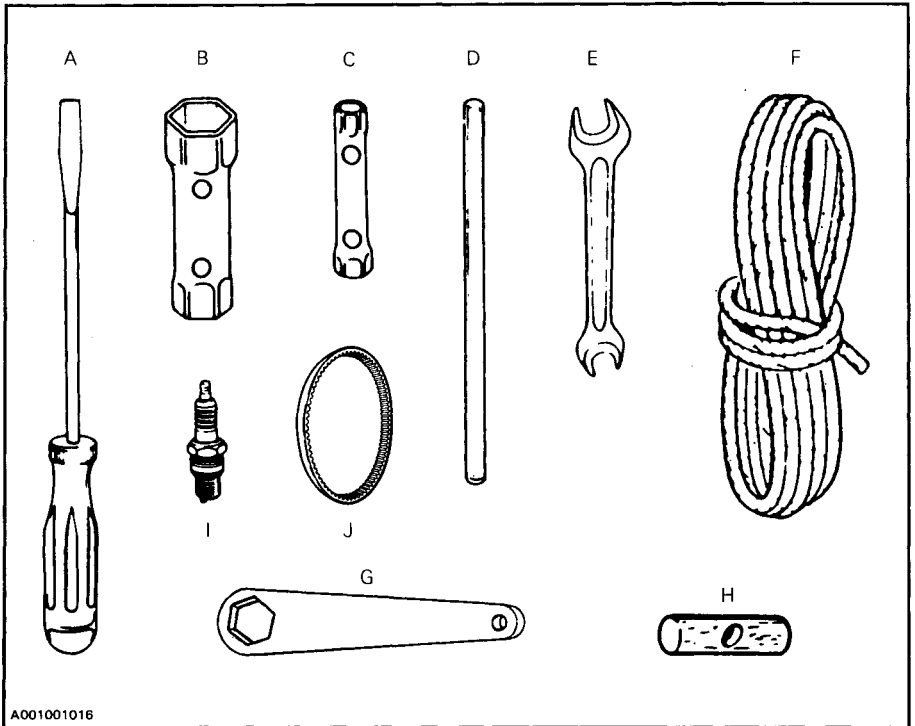
Two straps are fixed on each side of the frame above the footboard to securely attach a pair of skis.



TOOLS

As standard equipment each new snowmobile is supplied with a basic tool kit such as screwdriver, wrenches, emergency starter rope, etc.

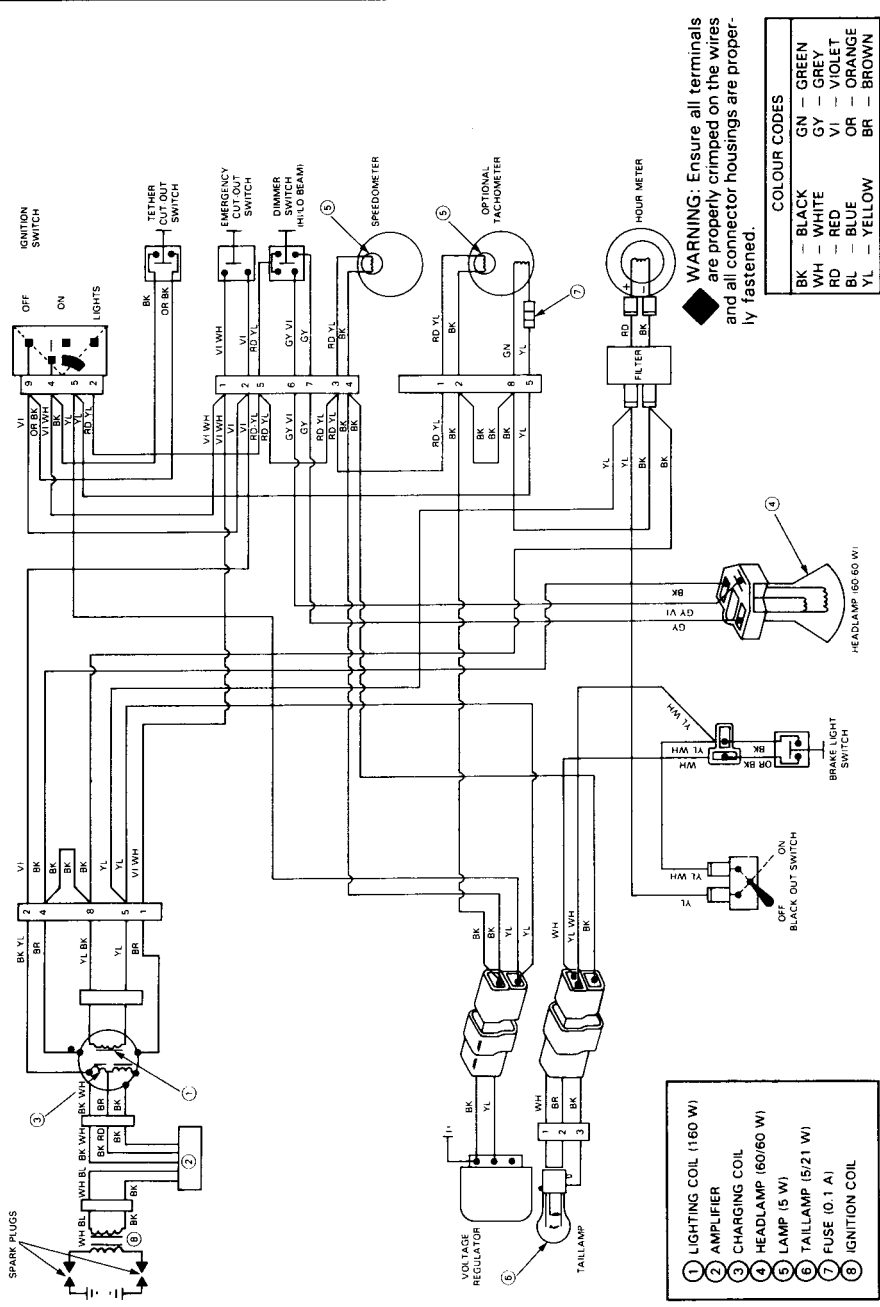
Standard Tools



A001001016

- A. Screwdriver
- B. Socket 21/26 mm
- C. Socket 10/13 mm
- D. Socket handle
- E. Fork wrench 10/13 mm
- F. Starter rope
- G. Suspension adjustment key
- H. Starter grip
- I. Spark plug (2) (on air box)
- J. Drive belt (under hood)

WIRING DIAGRAM Skandic 377R MILITARY



WARNING: Ensure all terminals are properly crimped on the wires and all connector housings are properly fastened.

COLOUR CODES	
GN	GREEN
BK	BLACK
WH	WHITE
RD	RED
VI	VIOLET
OR	ORANGE
BR	BROWN
YL	YELLOW
GY	GREY
BL	BLUE

- ① LIGHTING COIL (160 W)
- ② AMPLIFIER
- ③ CHARGING COIL
- ④ HEADLAMP (60/60 W)
- ⑤ LAMP (5 W)
- ⑥ TAILLAMP (5/21 W)
- ⑦ FUSE (0.1 A)
- ⑧ IGNITION COIL

