



GARMIN™ nüvi GPS Special Functions

INSTRUCTIONS

Integrating track “.gpx” files to the nüvi 500

This instruction sheet is an addition to the GARMIN nüvi 500 Owner’s Manual. It does not replace the Garmin instructions and must be used in conjunction with them. The GARMIN nüvi 500 comes with great *on road* and *off road* features. BRP invites you to learn more by visiting GARMIN support website at: www.garmin.com/garmin/cms/site/us/support

**SUBJECTS
(FUNCTIONALITIES)**

1. Integrating track “.gpx” files to the nüvi 500: if one would like to incorporate custom gpx off-road routes with directions into his GARMIN nüvi 500.
2. Trip Log: if one would like to record “way-points” or “viapoints”, so they can be edited, shared on the internet, or reused on other user’s GPS.
3. Using the TracBack® function: if one would like to use the nüvi 500 to record a trip, and ask the nüvi 500 to show the way back, following the same path.

DISCLAIMER

This instruction sheet gives examples of third-party software available from internet. These software programs or companies are not affiliated in any way with BRP nor GARMIN. BRP nor GARMIN cannot vouch for their performance or support any issues related to using these softwares. At no time BRP nor GARMIN can be responsible for their usage. Some sites may be free, other sites may request buying licences. Other sites/software are also available, users may want to choose the ones they are the most comfortable with.

NOTE: The illustrations in this document show typical construction of the different assemblies and may not reproduce the full detail or exact shape of the parts; however, they represent parts that have the same or similar function.

Track (.gpx type of files) can be found from sharing web sites such as:

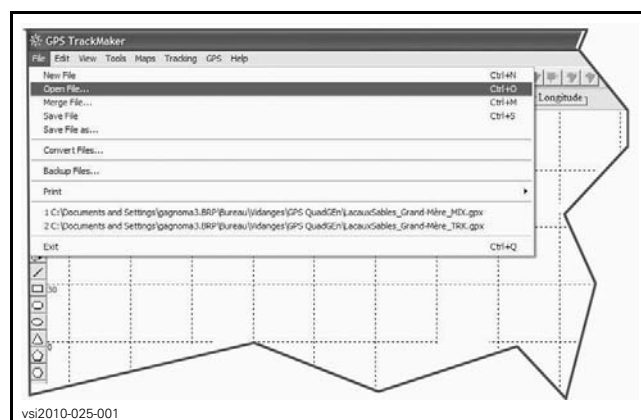
- GPXchange™: www.gpxchange.com
- QuadGen™: www.forumquad.com
- Other sites which are also available

Before being downloaded to your nüvi 500, track files (.gpx) need to be converted “to a Route” using third-party software

Examples:

- TrackMaker (freeware): <http://www.gpstm.com>.
- MapTech Terrain Navigator™ (US only, cost varies by map coverage), <http://maptech.mytopo.com/land/>.
- Other software are also available.

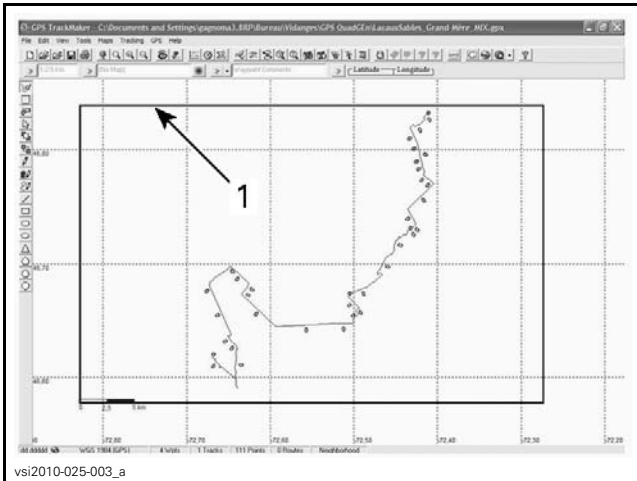
1. Download, install and open conversion software on your PC. As an example, “GPS TrackMaker” will be used for these instructions.
2. You must have some track files (.gpx) on your computer before trying to convert and import them to your GARMIN nüvi 500.
3. From “File” drop down menu, select “Open File”
4. On your PC, locate and select the .gpx track file to convert



“GPS TRACKMAKER” MENU

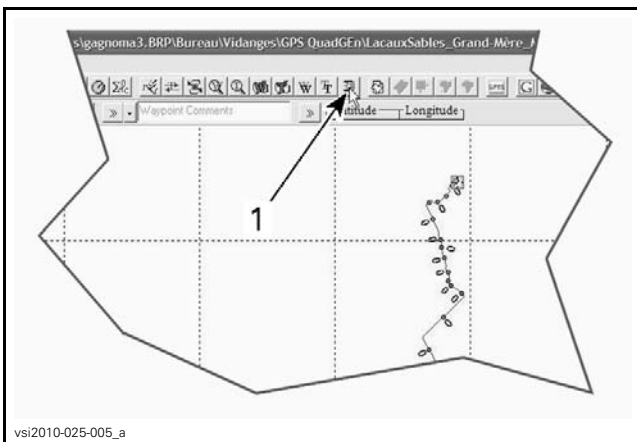
5. The track will be displayed.

6. Select track.



1. Selected track area

7. Select reducer function



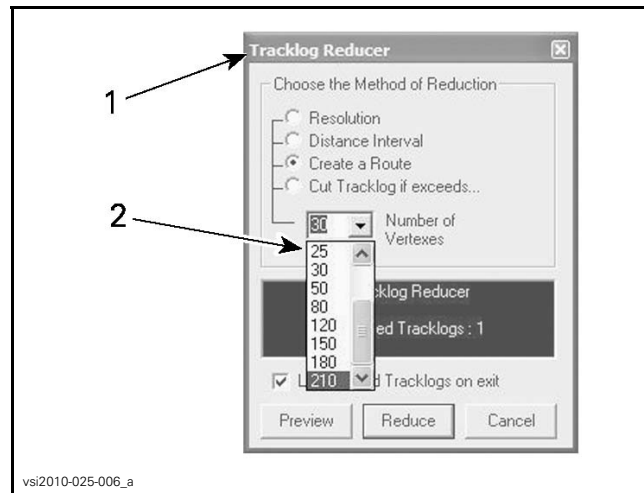
1. "Reducer" icon.

8. "Tracklog Reducer" menu will show up.

9. Select: "Create a Route".

10. Set the "Number of Vertexes" to the maximum value

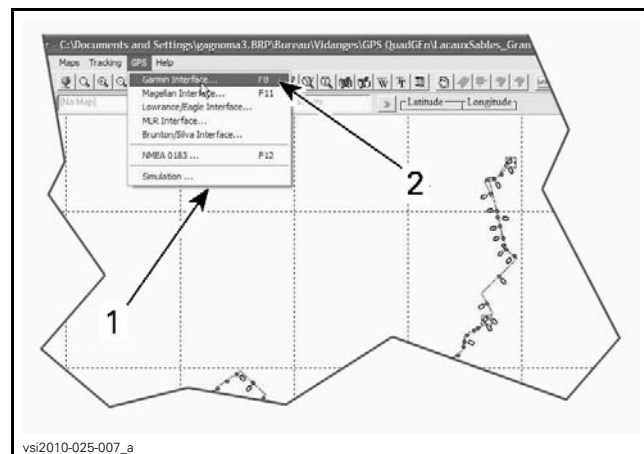
11. Click "Reduce"



1. Tracking Reducer menu
2. Number of vertexes drop down list

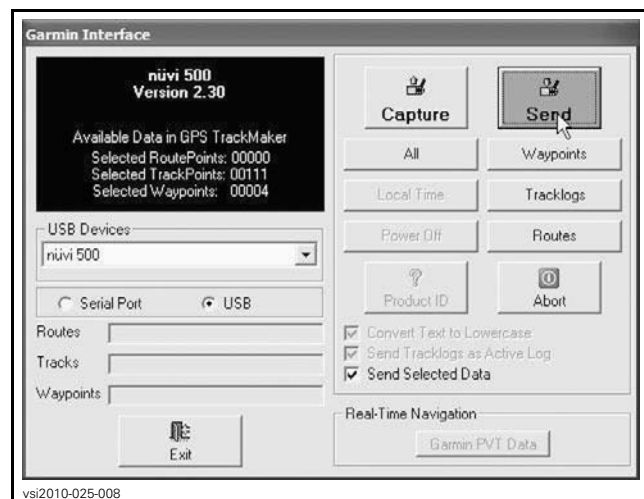
12. Connect the GARMIN nüvi to the USB port of you PC.

13. From "GPS" drop down menu select "GARMIN Interface".



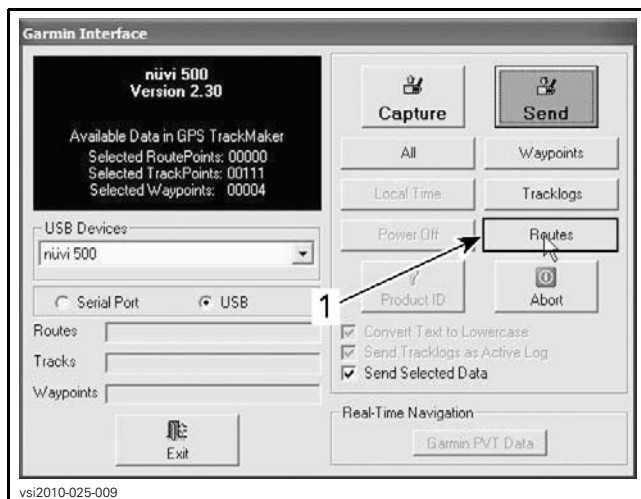
1. GPS drop down menu
2. GARMIN interface icon

14. Click « Send ».



GARMIN nüvi 500 INTERFACE MENU

15. Click « Routes » The information is now sent to the GARMIN nüvi 500.



1. "Routes" selection

Before using new off road routes, the GARMIN nüvi 500 navigation settings need to be changed to off road. This step is important, otherwise the nüvi 500 will attempt to calculate the best route based on street data.

16. On the GARMIN nüvi 500 select:

- "Tools"
- "Settings"
- "Navigation"
- "Route Preference"
- "Off Road"
- Go back to the main menu

The first time a new routes is used, it needs to be recalculated by your GARMIN nüvi 500 and imported to the "Custom Routes" folder.

17. Select:

- "Tools"
- "My Data"
- "Import Route From File" (recorded routes are in this folder)
- Select wanted route(s)
- Click "Import"

Imported files actually do not take up much space, but they can carefully be removed by the user.

To do so:

- connect the nüvi 500 to your PC
- navigate to the following path on the nüvi hard drive: ...\\GARMIN\\GPX
- delete all files from the GPX directory
- safely disconnect the nüvi 500 from the PC

18. Go back to the Main Menu, after calculations are completed.

19. To navigate a route, select:

- "Where To?"
- "Custom Routes" (your new track should be listed)

You can now edit, preview or start navigating the route via the "Go!" button.

NOTE: Clicking on the screen gives the option to select "Set as new Destination" or "Add as Via Point"; make the most appropriate selection for your usage.

Trip Log: recording "waypoints" or "Viapoints" and sharing them via internet

This operation requires the use of third-party software. As an example, "MapSource" will be used for these instructions. To be reused on other user's GPS, to be shared on the internet, or for editing, Trip Log needs to be extracted from the GARMIN nüvi 500 to a PC.

1. Make sure that the Trip Log feature of the nüvi 500 is turned on. To turn ON and check status of Trip Log, select:
 - "Tools"
 - "Settings"
 - "Map"
 - "Trip Log Show"

You may want to clear it before starting your new path, otherwise it will include all paths since the Trip Log was turned on.

2. To clear Trip Log, select:

- "Tools"
- "My Data"
- "Clear Trip Log"

3. Once the trip is completed, connect the GARMIN nüvi to a PC via the USB port.

4. Open MapSource.

5. Select:

- "Transfer" menu
- "Receive From Device"

6. Click "Receive".

You may now edit your track as you wish and save as any number of formats (.gdb, .gpx, etc.). More information on the Trip Log function is available via a search for "trip log nüvi" on GARMIN Support website.

TracBack®

It is possible to use the nüvi 500 to record a trip and ask the nüvi 500 to show the way back, following the same path. This is one of the most wanted features on a GPS used on ATVs. This function is called TracBack®, and is also described in the nüvi 500 Owner's Manual. Here are the basics.

On the GARMIN nüvi 500 screen, select:

1. "Where To?"
2. "TracBack" to view your recent track.
3. "Save" to save the track to your "Favorites".
4. "Go!" to retrace your recent path of travel.