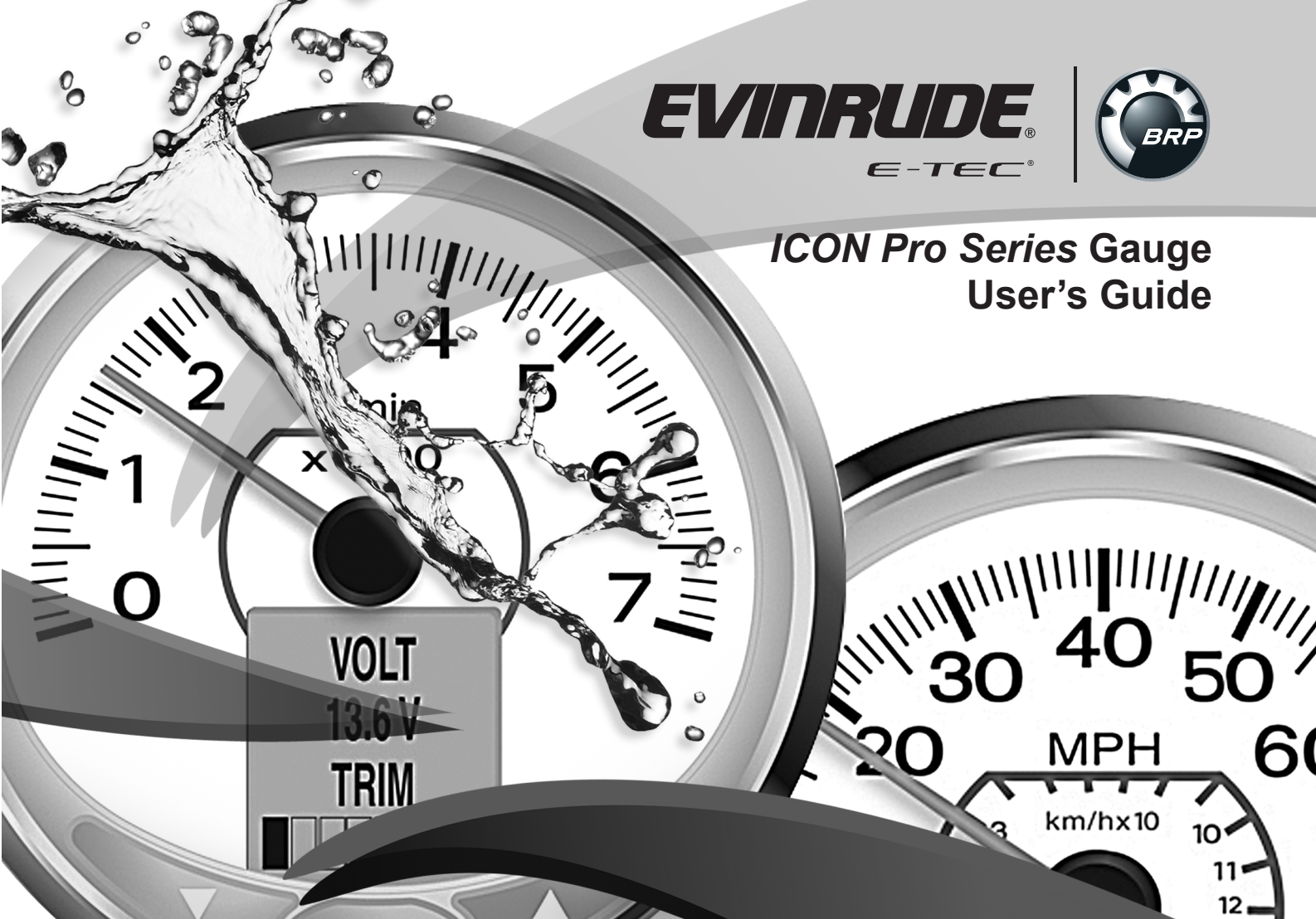


**EVINRUDE**<sup>®</sup>

*E-TEC*<sup>®</sup>



**ICON Pro Series Gauge  
User's Guide**





**IMPORTANT:** This User's Guide outlines the functionality and usage of *ICON* gauges. Before using the *ICON* gauges, first read and understand all of the supplied product literature, as well as the boat's user's guide and outboard's operator's guide. This user's guide should be stored onboard for reference.

The photographs, illustrations, and display screens used in this guide might not depict actual models, figures, data fields, equipment, or software versions, but are intended as representative views for reference only. The continuing accuracy of this guide cannot be guaranteed.

† *NMEA 2000* is a registered trademark of the National Marine Electronics Association or its subsidiaries.

The following trademarks are the property of Bombardier Recreational Products Inc. or its affiliates.

*Evinrude*® *E-TEC*®

*Evinrude*®

*Johnson*®

*ICON*™ Electronic Remote Control System

*ICON*™ Gauge Package

*S.A.F.E.*™ (Speed Adjusting Failsafe Electronics)

BRP US Inc. / Outboard Engines Division  
After Sales Support  
P.O. Box 597  
Sturtevant, WI 53177

Printed in the United States.

© 2016 BRP US Inc. All rights reserved.

TM, ® Trademarks and registered trademarks of Bombardier Recreational Products Inc. or its affiliates.

## About This Guide

**IMPORTANT:** Read this user's guide carefully before using the *ICON* gauges. This user's guide should be kept onboard at all times during operation.

For any questions regarding the boat or outboard operation, please refer to the boat's user's guide, or outboard's operator's guide for support information.

For questions or problems regarding the *ICON* gauge, contact your dealer.

Dealers with questions should contact BRP Parts and Accessories Technical Help.

### **WARNING**

**For your safety and the safety of others, follow all safety warnings and recommendations supplied with the boat and outboard. Do not disregard any of the safety precautions and instructions**

**IMPORTANT:** All tachometers use the program PGF484. At startup, the instrument will display this information along with the revision build number.

All 80 MPH and 130 KMH speedometers use the program PGF485.

All 50 MPH and 80 KMH speedometers use the program PGF486.

Gauges with other software versions may have features not documented in this guide.



# Table of Contents

About This Guide	2	SYSTEM	36
Table of Contents	3	Initialization	37
Select Language	8	System Language	38
Select Clock Offset/GMT	9	Audio Settings	39
Engine Initialization	10	Clock Settings	43
Engine Type	11	Set Display Units	47
Default Display Units	12	Self Test	48
Tank Setup (G1 Engines)	13	Fuel Added Auto Detect	49
Tank Setup (G2 Engines)	14	Software Version	50
Fuel Totalizer	19	Master Reset	51
Reset the Totalizer Fuel Used	19	Winterizing the Engine (G1 Engines)	52
Contrast Settings	21	Winterizing the Engine (G2 Engines)	54
Backlight Settings	22	FUEL SETUP FOR G1 ENGINES	55
Fuel Level	23	Fuel Tank Setup	56
Setting the Fuel Level	24	Tank Setup for G2 Engines	61
Adding Fuel to the Fuel Tank	26	Fuel Remaining Source	64
Trip Data	27	Max Speed	65
View Trip and Season Data	28	Available Data Pages	68
Resetting Trip and Season Data	29	Display Settings	69
Gear Position Indicator	33	Set Number of Data Pages	70
Alarms	34	Data Page Auto–Scrolling	71
Custom Alarms	34	Screen Setup	73
Evinrude Alarms	34	Setting the Line 2 Data	75
		LCD Color	76
		Data Sources for G1 Engines	77

Tanks	78
Engine	80
Trim	83
Battery (G1 Engines)	86
Water Temperature	87
Air Temp	88
Speed	89
Steering Angle	90
Pop Up Alerts	91
To Turn the Pop Up ON or OFF:	92
To Set the Pop Up Threshold Value:	93
Pop Up Duration	94
Setting Custom Alarms	95
Data Sources for G2 Engines	98
Tanks	99
Remain Source	100
Engine	101
Trim	102
Rudder	103
Battery (G2 Engines)	104
Depth Warning (If Equipped)	106
SYSTEM	110
Audio Settings	111
Master Reset	115
Software Version	116

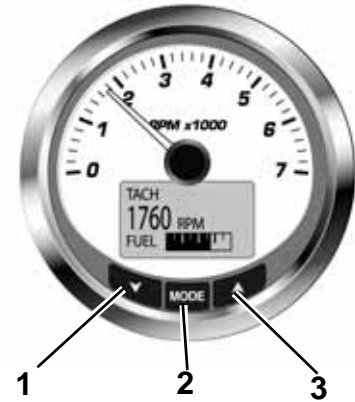
DISPLAY	117
Set Number of Data Pages	118
Screen Setup	119
Data Page Auto–Scrolling	121
DATA SOURCES	123
Select Speedometer Source	124
Select Sea Water Temperature Source	125
Select Air Temperature Source	126
MAXIMUM SPEED	127

***ICON PRO SERIES* Gauge  
Setup**

# ICON Pro Series Gauges

The *ICON* tachometer and *ICON* speedometer are controlled by a three-button keypad. The buttons are:

- UP** and **DOWN**: Use to scroll through available pages and the options within the system menus.
- MODE**: Use to access system menus. Press the button briefly (less than one second) to exit a menu. Press and hold the button (greater than one second) to enter or save a selection.



1. *DOWN* button
2. *MODE* button
3. *UP* button

009962



# Power ON

The power ON sequence for the tachometer and speedometer includes a Self-Test which occurs at every power ON event.

Turn the ignition key to the ON position. Starting the engine is not required. The Self-Test process includes the following steps:

- 1.) If initialization is complete, the LCD will display SELF TEST. All of the lights in the ICON Pro Gauge will blink. First the dial lights will blink, followed by the LCD backlights, and finally the warning lights will blink.
- 2.) All gauge pointers will return to the zero position
- 3.) All gauge pointers will sweep to full scale
- 4.) All gauge pointers will go to current value

The *ICON* tachometer and speedometer LCD screens will display SELF TEST COMPLETE!

When the Self-Test is complete, if the LCD screen displays data, then the system initialization has already been completed.

The System Setup screen will appear if the system initialization has not been completed. Use the Initialization process to complete the required system setup.



009963

# Initialization

System setup of each tachometer is required for the *ICON* gauge package to operate correctly.

To complete the setup process select the default language, set the proper setting on the clock, set the number of engines in the system, select the engine type, select the system default units, configure the different types of tanks on the vessel and set the tank size. The following sections describe the steps required to complete the tachometer setup.



009964

## Select Language

- 1.) Use the UP or DOWN buttons to select the desired language. Available languages are: English, Spanish, French, Italian and German.
- 2.) Press and hold the MODE button to save the language selection. The LCD screen will display SETTING SAVED! and the horn will sound an audible beep.



009965

# Select Clock Offset/GMT

- 1.) Use the UP or DOWN buttons to select the proper clock offset for the appropriate time zone.
- 2.) Once the proper offset is highlighted, press and hold the MODE button until the tachometer beeps. This will save the setting that you selected.

**IMPORTANT:** Be sure to choose the proper setting based on the appropriate time zone.



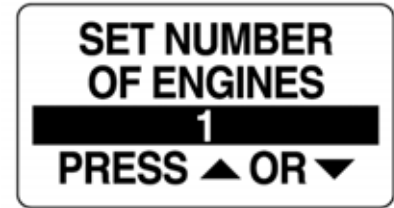
009966

# Engine Initialization

- 1.) Use the UP or DOWN buttons to select the number of engines installed on the boat. *ICON* gauges support up to five engines.
- 2.) Press and hold the MODE button to save the number of engines. The LCD screen will display SETTING SAVED! and the horn will sound an audible beep.

Complete steps 3 and 4 if two or more engines are selected.

- 3.) Use the UP or DOWN buttons to select the engine identifier. The engine identifier assigns each *ICON* tachometer to monitor a specific engine.
- 4.) Press and hold the MODE button to save the setting. The LCD screen will display SETTING SAVED! and the horn will sound an audible beep.



009967



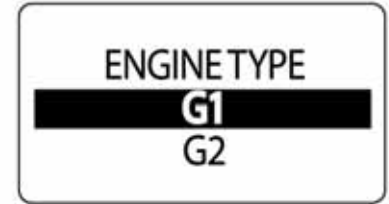
009968

# Engine Type

Set the engine type to either G1 or G2 using the following steps:

- 1.) Use the UP and DOWN buttons to highlight either G1 or G2.
- 2.) Once the proper engine type is selected, hold the MODE button down to save the appropriate selection.

The LCD screen will display **SETTING SAVED!** and the ICON gauge will issue and audible beep.



009969



009970

# Default Display Units

The default display units sets the units for all data fields in the instrument package. Use DISPLAY SETTINGS to adjust individual data field units.

- 1.) Use the UP or DOWN buttons to select the desired display units. Available display units are: US (SAE) and EURO (metric).
- 2.) Press and hold the MODE button to save the desired display units. The LCD screen will display SETTING SAVED! and the horn will sound an audible beep.



009971



009970

# Tank Setup (G1 Engines)

For each tank indicated in the system, the ICON tachometer will ask for the type of tank being used. Tank types available are FUEL, FRESHWATER, GREY WATER, LIVEWELL, OIL LEVEL, BLACK WATER, BALLAST and AVAIL TANK.

- 1.) Use the UP or DOWN buttons to select the type of tank being used in the system.
- 2.) Press and hold the MODE button to save the appropriate type of tank. The LCD screen will display SETTING SAVED! and the horn will sound an audible beep.

If FUEL is selected, go to Step 3 for the fuel tank setup procedure.

- 3.) Use the UP or DOWN buttons to set the capacity of the first fuel tank. Press and hold the UP or DOWN button to set the fuel tank capacity in a more rapid manner.
- 4.) Press and hold the MODE button to save the capacity of the fuel tank. The LCD screen will display SETTING SAVED! and sound an audible beep.
- 5.) Repeat Steps 1-4 for additional fuel tanks.
- 6.) When the Fuel Tank Setup is completed and all available tank types have been identified, the tachometer's initialization is complete. The display will read "BASIC INITIALIZATION COMPLETE!" and the ICON gauge will issue an audible beep.



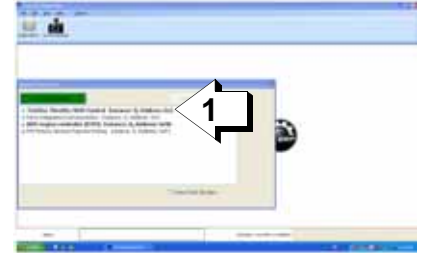
009972



009973

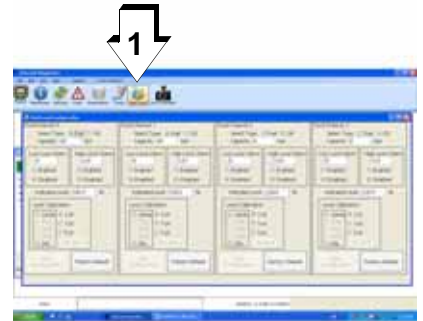
# Tank Setup (G2 Engines)

- 1.) Connect a laptop equipped with EvDiag6 to the diagnostic port of the outboard.
- 2.) Open EvDiag6 and connect to the network.
- 3.) Select the *Teleflex Throttle/Shift Control* option.
- 4.) Click on the Fluid Levels box at the top of the screen. This will bring up the fluid level configuration box where the instances for each tank will need to be configured.



1. *Teleflex Throttle/Shift Control*

009974



1. *Fluid Levels box*

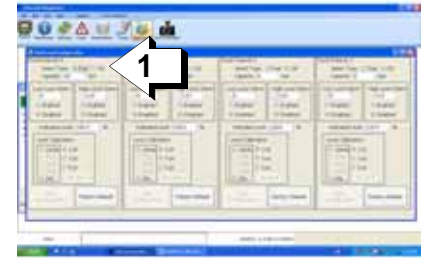
009975



5.) Select Fuel or Oil for each tank within the proper Fluid Channel box.

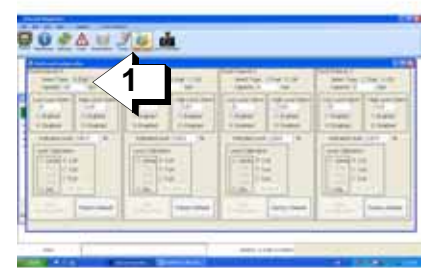
**NOTE:** Channels 0 and 1 are set to fuel by default while channels 2 and 3 are set to oil by default.

6.) Set the capacity of each tank by entering the value into the proper capacity box.



1. Fuel/Oil options

009975



1. Capacity box

009975

7.) Enter the Low and High Level Alarms into the *Low Level Alarm* and *High Level Alarm* boxes within the proper *Fluid Channel* box.

**NOTE:** Setting these values will trigger an alarm when the tanks reach the set high and low values.

8.) Set the tank level calibration for each tank within the proper *Fluid Channel* box.

Each tank can be set to either 2, 3 or 5 point calibration.

When the level sender is set to a 2 point calibration, the level sender will read only 100% and 0%.

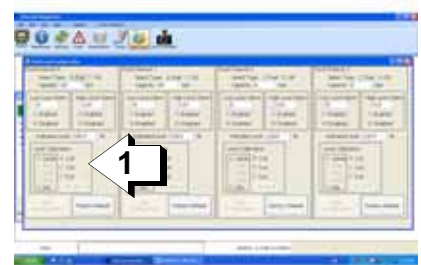
When the level sender is set to a 3 point calibration, the level sender will read 100%, 50% and 0%.

When the level sender is set to a 5 point calibration, the level sender will read 100%, 75%, 50%, 25% and 0%.

9.) Save the settings by clicking on the *Save Configuration* box or reset all of the settings by clicking on the *Factory Default* box.



1. *Low and High Level Alarm* boxes 009975

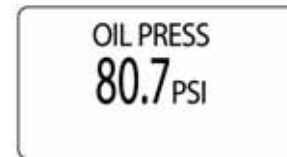
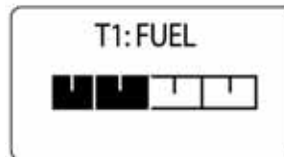
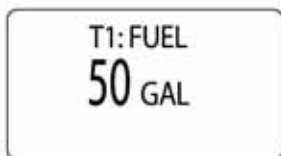
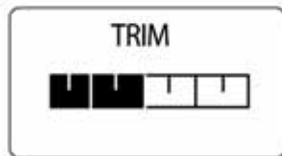
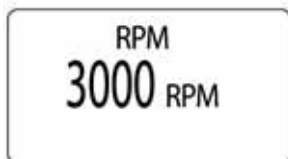


1. *Level Calibration* box 009975

# Default Pages

When initialization for the tachometer is complete the tachometer is ready for use. The tachometer's LCD screen will display the default data page.

The tachometer factory default data pages are shown below. Press the UP or DOWN buttons to scroll through the default display pages.



# Menu Options

Pressing the MODE button once will show the Tachometer Menu Options. These options are

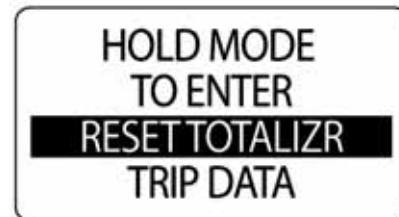
- RESET TOTALIZER: This option resets the total fuel used
- TRIP DATA: This option records engine hours, Fuel Used, Odometer and Fuel Rate
- FUEL LEVEL: This option is used for quick access to add fuel to one of the fuel tanks.
- EDIT MENU: This options is used to make global Tachometer settings and changes
- CONTRAST: This option is used to adjust the Tachometer and Speedometer's display.
- LIGHTING: This option is used to adjust the lighting level(s).
- DEPTH: This option is used to set the depth of the water alarms (if available).

# Fuel Totalizer

The Fuel Totalizer is used when more than one Fuel Tank is installed in the system. The Totalizer will monitor all of the installed Fuel Tanks, gather and combine the data for fuel usage for the entire system. The ICON gauge automatically collects the fuel data based on the settings in the individual tank settings completed in the FUEL SETUP section of this book.

## Reset the Totalizer Fuel Used

- 1.) Use the UP or DOWN buttons to select RESET TOTALIZER.
- 2.) Press and hold the MODE button to enter the RESET TOTALIZER menu.
- 3.) Use the UP and/or DOWN buttons to select YES. Then press and hold the MODE button to save the selection. The LCD screen will display SETTING SAVED! and the gauge will issue an audible beep.
- 4.) Select NO to exit.



009988



009989

# Display Settings

Adjust the display settings to improve visibility.

- 1.) Press the MODE button once to enter the MENU OPTIONS page.
- 2.) Press the UP or DOWN buttons to select LIGHTING or CONTRAST.
- 3.) Press and hold the MODE button to make the selection.

To adjust the contrast, go to Step 4.

To adjust the backlight on all system gauges and *NMEA 2000* backbone network devices, go to Step 6.

**NOTE:** LIGHTING is available only if the source for LCD, DIAL or SYSTEM is set to INSTRUMENT.



009990

# Contrast Settings

There are 22 defined contrast levels. The contrast level will change to negative mode (white font on dark background), halfway through the 22 pre-defined contrast settings.

- 4.) Press the UP button to increase or press the DOWN button to decrease the contrast level of the LCD screen on all tachometers and speedometer.
- 5.) The contrast setting is automatically saved to the tachometer and synchronized to all *ICON* gauges.



009991



009992

# Backlight Settings

By default, the Dial Backlight and the Display Backlight are synchronized. Use the ICON Tachometer to adjust the lighting options.

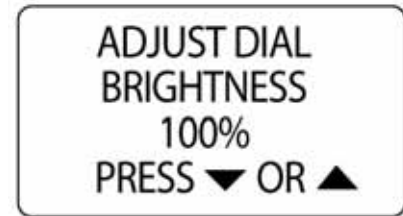
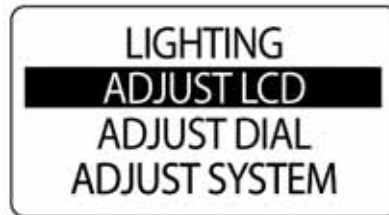
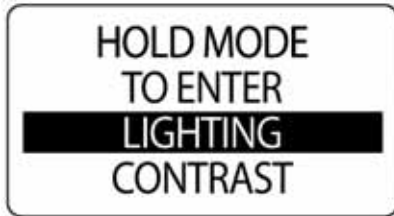
If the boat is equipped with an *ICON* Remote Control, gauge lighting can be adjusted using the buttons on the remote control by pushing the + and - buttons.

Adjust the lighting using the steps below.

6.) Use the UP and DOWN buttons to select the LIGHTING to adjust.

7.) Press and hold the MODE button to save the selection.

Use Backlight Adjustment Kit, P/N 766108, for *ICON* basic gauges.



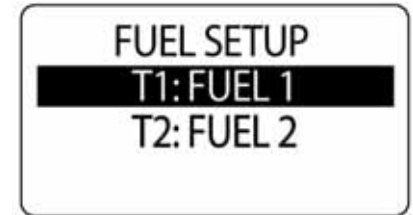


# Fuel Level

Use FUEL LEVEL to quickly add fuel amounts to each fuel tank and set the tank indicator to FULL after a fuel fill up. By keeping accurate accounts of fuel added to the tanks, at fill up, the ICON tachometer can calculate accurate fuel economy values including Fuel Flow, Range and Trip Data.



009996



009997

# Setting the Fuel Level

**IMPORTANT:** Setting the Fuel Level in the ICON tachometer is performed in the PORT tachometer if more than one ICON tachometer is in use.

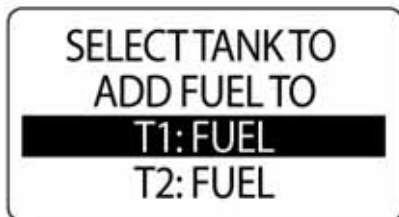
To set the fuel level to full:

- 1.) Press and hold the MODE button to enter the Menu Options menu.
- 2.) Use the UP and DOWN buttons to select FUEL LEVEL.
- 3.) Press and hold the MODE buttons to make a selection.
- 4.) Use the UP and DOWN buttons to select the tank in which to add fuel.
- 5.) Press and hold the MODE button to make a selection.
- 6.) Use the UP and DOWN buttons to select SET FULL

- 7.) Press and hold the MODE button to set the fuel tank to FULL
- 8.) Use the UP or DOWN buttons to select YES. Select NO to exit.
- 9.) Press and hold the MODE button to save the selection.

If YES was selected, the LCD screen will display SETTING SAVED! and then return to the SET FULL menu.

NOTE: A full indication indicates that the amount of fuel added to the fuel tank is equal to the capacity of the fuel tank set up in the initialization setup. The ICON gauge uses this number to calculate the Fuel economy calculations. An inaccuracy in this number will result in faulty calculations.



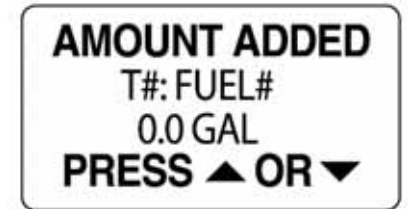
# Adding Fuel to the Fuel Tank

- 1.) Press and hold the MODE button to enter the Menu Options menu.
- 2.) Use the UP and DOWN buttons to select FUEL LEVEL.
- 3.) Press and hold the MODE button to make the selection.
- 4.) Use the UP and DOWN buttons to select the proper tank in which to add fuel.
- 5.) Press and hold the MODE button to make the selection.
- 6.) Use the UP and DOWN buttons to select ADD FUEL.
- 7.) Press and hold the MODE button to enter the TANK # ADD menu.
- 8.) Use the UP or DOWN buttons to set the volume of fuel that had been added to the fuel tank.
- 9.) Press and hold the MODE button to save the setting.
- 10.) The LCD will display SETTING SAVED! and the gauge will issue an audible beep.

**NOTE:** Holding the UP or DOWN buttons will increase or decrease the amount in a more rapid fashion.



010001



010002

# Trip Data

The Trip Data feature records engine hours, fuel used, odometer and fuel rate for two trips and the season. To view the Trip Data, enter the Menu Options menu then:

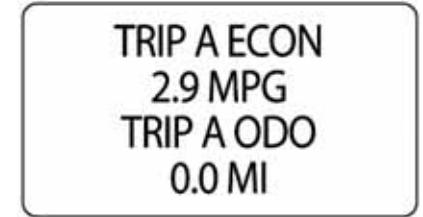
- 1.) Press and hold the MODE button to enter the Menu Options menu.
- 2.) Use the UP and DOWN buttons to select TRIP DATA.
- 3.) Press and hold the MODE button to make a selection.
- 4.) Follow the steps in the next section for viewing and resetting trip data.



## View Trip and Season Data

- 1.) Use the UP or DOWN buttons to select TRIP A, TRIP B or SEASON.
- 2.) Press and hold the MODE button to enter the selection.
- 3.) Use the UP or DOWN buttons to select VIEW DATA.
- 4.) Press and hold the MODE button to make a selection.
- 5.) Use the UP or DOWN buttons to select information to be shown.

**NOTE:** Available trip information is ECON, ODO, FUEL and HOURS.



010006



010007

## Resetting Trip and Season Data

- 1.) Use the UP or DOWN buttons to select TRIP A, TRIP B, or SEASON.
- 2.) Press and hold the MODE button to enter the selection.
- 3.) Use the UP or DOWN buttons to select REST DATA.
- 4.) Press and hold the MODE button to make a selection.
- 5.) Use the UP or DOWN buttons to select YES to reset the data. Select NO to exit.
- 6.) Press and hold the MODE button to reset the data. The LCD screen displays SETTING SAVED! and the gauge will issue an audible beep.



010008





# **Tachometer Operation**

# Special Features

The *ICON* tachometer has three special features that notify the operator when certain events occur. The special features are:

- Gear Position Indicator – provides notification of gear position changes when an *ICON* digital remote control system is installed in the boat.
- Alarms – provides notification of user defined custom warnings and engine specific warnings.
- Fuel Added Auto Detect – provides notification for fuel management options.



010009



010010

# Gear Position Indicator

The LCD screen displays gear position for FORWARD (F), NEUTRAL (N) and REVERSE (R) and the horn sounds an audible beep when the operator makes gear position changes using an *ICON* digital remote control.

The audible beep can be turned off by changing the default setting. The display remains active for two seconds and then returns to the previous data page.



# Alarms

The *ICON* gauge package has two types of alarms; custom alarms and *Evinrude* alarms.

## Custom Alarms

Custom alarms are user defined. A custom alarm displays a brief alarm message on the LCD screen of the tachometer and speedometer.

## *Evinrude* Alarms

In the event of an engine related alarm, an alarm message is displayed on the LCD screen of the tachometer and speedometer. The horn sounds and the LCD backlight color changes to red for a serious alarm, or to amber for minor alarm.

Press the MODE button to silence the alarm.

Press the UP or DOWN button to view all present alarms. Additional alarm information can be viewed by accessing the Diagnostic Mode.

*ICON* basic gauges will flash the dial backlight and sound the horn to indicate alarms.

*ICON* 2 inch accessory gauges flash the dial backlight to indicate an alarm.



010014



010015

# Edit Menu

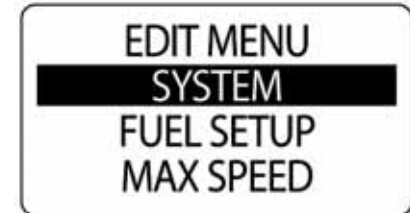
The EDIT MENU options are:

- FUEL SETUP:** Use to set and manage the fuel devices.
- MAX SPEED:** Use to view and reset the maximum speed setting.
- DISPLAY:** Use to edit the data pages and adjust lighting and contrast.
- DATA SRCS:** Use to select the data sources for engine parameters, trim, battery, oil sender and analog inputs.
- DEPTH WARN:** Use to set shallow, deep and keel warnings.
- CUSTOM ALERTS:** Use to set alarms for oil pressure and engine temperature.
- POP UP ALERTS:** Use to set user definable information pop ups when changes occur in a monitored data value.
- SYSTEM:** Use to make changes to audio, perform a self-test or master reset and view the software version.

- 1.) Press the MODE button once to display the Menu Options.
- 2.) Use the UP or DOWN buttons to select EDIT MENU. Then press and hold the MODE button to enter.



010016



010017

# SYSTEM

Use the SYSTEM menu to initialize the tachometer, set the system language, adjust audio settings, perform a Self-Test or Master Reset, and to view the current software version for the tachometer. The SYSTEM menu is also used to enter diagnostic mode and to enter the engine winterize mode.

- 1.) Press the MODE button once.
- 2.) Use the UP or DOWN buttons to select EDIT MENU.
- 3.) Press and hold the MODE button to enter EDIT MENU options.
- 4.) Use the UP or DOWN buttons to select SYSTEM.
- 5.) Press and hold the MODE button to enter SYSTEM menu options.



010017

## Initialization

When the ICON tachometer is first powered on, the ICON gauge will enter INITIALIZATION mode.

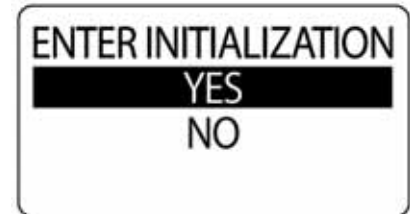
If initialization is needed after the first power ON:

- 1.) Use the UP or DOWN buttons to select INITIALIZE.
- 2.) Press and hold the MODE button to make the selection.
- 3.) Use the UP or DOWN buttons to select YES. Select NO to return to the EDIT menu.
- 4.) Press and hold the MODE button to make a selection.

**NOTE:** If the ICON tachometer has not been initialized previously, when power is first applied the tachometer will automatically start up into the INITIALIZATION mode.



010018



010019

## System Language

To select or change the system language, enter the SYSTEM menu then:

- 1.) Use the UP or DOWN button to select LANGUAGE.
- 2.) Press and hold the MODE button to make the selection.
- 3.) Use the UP or DOWN buttons to select the desired language to be used.
- 4.) Press and hold the MODE button to save the language selection.
- 5.) The LCD screen will display SETTING SAVED! and the gauge will issue an audible beep.

**NOTE:** The available languages are English, Spanish, French, Italian and German.



010020



009970



## Audio Settings

Use the AUDIO menu to turn the horn ON or OFF for warnings, saving settings, pressing buttons, or gear position changes.

**IMPORTANT:** The audio setting ALL, should NOT be used to turn OFF warnings.

To enter the AUDIO menu:

- 1.) Press the MODE button once.
- 2.) Use the UP or DOWN buttons to select EDIT MENU options.
- 3.) Press and hold the MODE button to enter Edit Menu options.
- 4.) Use the UP or DOWN buttons to select SYSTEM.
- 5.) Press and hold the MODE button to enter SYSTEM menu options.
- 6.) Use the UP or DOWN buttons to select AUDIO.
- 7.) Press and hold the MODE button to enter the AUDIO menu.



010021



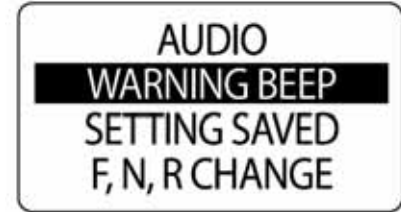
010022

## Warning ON or OFF

Use WARNING BEEP to turn the horn ON or OFF while a warning is occurring in the *ICON* Tachometer. To change the setting enter the AUDIO menu, then:

- 1.) Use the UP or DOWN buttons to select WARNING BEEP.
- 2.) Press and hold the MODE button to enter WARNING BEEP.
- 3.) Use the UP or DOWN buttons to select ON or OFF.
- 4.) Press and hold the MODE button to save the setting. The LCD screen will display SETTING SAVED!

**IMPORTANT:** Turning OFF the WARNING BEEP is **NOT** recommended.



010023



010024

## Setting Saved Audio Setting

Use SETTING SAVED to turn the horn ON or OFF after a setting is saved in the *ICON* Tachometer. To change the setting enter the AUDIO menu, then:

- 1.) Use the UP or DOWN buttons to select SETTING SAVED.
- 2.) Press and hold the MODE button to enter SETTING SAVED.
- 3.) Use the UP or DOWN buttons to select ON or OFF.
- 4.) Press and hold the MODE button to save the setting. The LCD screen will display SETTING SAVED!



010025



009970

## All Sounds

Use ALL to turn the horn ON or OFF for all audio menu options. To change the setting enter the AUDIO menu, then:

- 1.) Use the UP or DOWN buttons to select ALL.
- 2.) Press and hold the MODE button to enter ALL.
- 3.) Use the UP or DOWN buttons to select ON or OFF.
- 4.) Press and hold the MODE button to save the setting. The LCD screen will display SETTING SAVED!

**IMPORTANT:** If this option is selected, be sure to turn ON the WARN BEEP.



010026

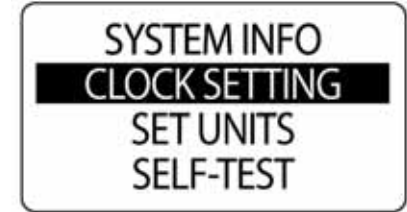


010027

## Clock Settings

The CLOCK data field is available if a GPS is connected to the system. Select the current time zone offset for the clock to show the correct local time. Clock data can be displayed in 12 or 24 hour format. To set the clock, enter the SYSTEM menu, then:

- 1.) Use the UP or DOWN buttons to select CLOCK SETTING.
- 2.) Press and hold the MODE button to enter the selection.



010028

## To Change the Time Offset:

- 1.) Use the UP or DOWN buttons to select TIME OFFSET.
- 2.) Press and hold the MODE button to enter the selection.
- 3.) Use the UP or DOWN buttons to select the correct TIME OFFSET value.
- 4.) Press and hold the MODE button to enter the selection.



010029



009970

# Alarms

The ICON gauge package is equipped with an ALRAMS menu that enables the user to view current and past alarms.

## View Current Alarms

To view the current alarms enter the ALARMS screen, then:

- 1.) Use the UP or DOWN buttons to select ALARMS.
- 2.) Press and hold the MODE button to enter the selection.
- 3.) Use the UP or DOWN buttons to select VIEW.
- 4.) Press and hold the MODE button to enter the selection.

If there are current alarms, the screen will show the first alarm. Use the UP or DOWN buttons to view all alarms. When finished, press the MODE button to escape.

**NOTE:** Date information is available only if a *NMEA 2000* GPS antenna is installed in the system.

If there are no current alarms, the LCD screen will display NO STORED ALARMS FOUND! for two seconds and an audible beep will be issued.



010030



010031

## Clear Alarms

To clear the stored alarms enter the SYSTEM menu, then:

- 1.) Use the UP or DOWN buttons to select ALARMS.
- 2.) Press and hold the MODE button to enter the selection.
- 3.) Use the UP or DOWN buttons to select CLEAR.
- 4.) Press and hold the MODE button to enter the selection.
- 5.) Use the UP and DOWN buttons to select YES.
- 6.) Press and hold the MODE button to save the selection. The LCD will display SETTING SAVED! and the ICON gauge will issue an audible beep.

**IMPORTANT:** This action will clear all recorded alarms and CANNOT be undone.



010032



009970



## Set Display Units

Use the Set Units menu to change the units for the data recorded in the ICON tachometer. Use the set units menu to change the units on all data or individual data type.

The units of the following information can be changes; ALL UNITS, VOLUME, DISTANCE, SPEED, TEMPERATURE, DEPTH, PRESSURE, GPS COG and FLOW RATE.

To make a change to the units, enter the SYSTEM menu then:

- 1.) Use the UP or DOWN buttons to select SET UNITS.
- 2.) Press and hold the MODE button to enter the selection.
- 3.) Use the UP or DOWN buttons to select the data type to be changed.
- 4.) Press and hold the MODE button to enter the selection.
- 5.) Use the UP or DOWN buttons to select the desired units type.
- 6.) Press and hold the MODE button to save the selection. The LCD screen will display SETTING SAVED! and the gauge will issue an audible beep.



010033



009970

## Self Test

Use the SELF-TEST feature to test the *ICON* gauge package is communicating with the Tachometer. To perform a self-test, enter the SYSTEM menu, then:

- 1.) Use the UP or DOWN buttons to select SELF-TEST.
- 2.) Press and hold the MODE button to enter the SELF-TEST.
- 3.) Use the UP or DOWN buttons to select YES.
- 4.) Press and hold the MODE button to begin the SELF-TEST.

During the SELF-TEST:

- The tachometer will run through a series of scripted self-test programs designed to test the operation of the tachometer.
- The pointer will move through a series of angles and the buzzer will beep.
- When finished, the tachometer LCD will display APP SELF TEST COMPLETE.
- Once complete, the display will return to normal operation.



010034



010035

## Fuel Added Auto Detect

A Fuel Added Auto Detect feature is provided to maintain accuracy of the fuel totalizer. When fuel is added to the fuel tank, all fuel level changes must be updated within the *ICON* gauge package.

**IMPORTANT:** The Auto Detect Feature is disabled if the fuel source is ENGINE.

- 1.) If the tachometer identifies that the fuel level in any of the active fuel tanks meets default criteria the auto pop up for fuel will appear.
- 2.) If fuel has been added to the fuel tank, press and hold the MODE button to select YES. If fuel has NOT been added to the fuel tank, use the UP or DOWN buttons to select NO. Press and hold the MODE button to enter this selection.

There are two options for adjusting the fuel level: ADD FUEL and SET FULL.

Use the UP or DOWN buttons to select the desired option. Press and hold the MODE button to enter this selection.



010036



010037

## Software Version

Use the SOFTWARE feature to view the current version of software operating in the tachometer. This information may be useful when communicating with technical support.

To view the software version, enter the SYSTEM menu, then:

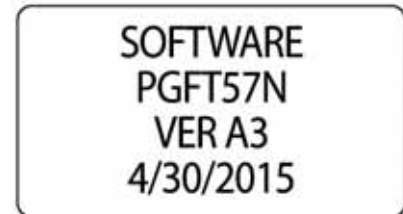
- 1.) Use the UP or DOWN buttons to select SOFTWARE.
- 2.) Press and hold the MODE button to enter the selection.

The LCD screen will display the:

- program identifier (starts with the letters “PGF”)
- revision for the program identifier
- release date for the software



010038



010039

# Master Reset

Use the MASTER RESET feature to reset the tachometer to the factory default settings.

To perform a master reset, enter the SYSTEM menu, then:

- 1.) Use the UP or DOWN buttons to select MSTR RESET.
- 2.) Press and hold the MODE button to enter the selection.
- 3.) Use the UP or DOWN buttons to select YES or NO.
- 4.) Press and hold the MODE button to enter the selection.

If NO is selected the gauge will exit to the SYSTEM menu. If YES is selected continue with the next step.

A warning message will display for five seconds and the horn will beep three times. Next, the LCD screen will display the message: CONTINUE WITH RESET?

- 5.) Use the UP or DOWN buttons to select YES or NO.
- 6.) Press and hold the MODE button to enter the selection.

If NO is selected, the gauge will exit to the SYSTEM menu.

If YES is selected, the *ICON* gauge will be reset to the factory default settings.



010040



010041

## Winterizing the Engine (G1 Engines)

The *ICON* gauge package provides a WINTERIZE feature for 2008 or newer *Evinrude E-TEC* V4 and V6 model engines. The engine must be running to use this feature. Refer to the **Outboard Operator's Guide** for complete procedure and Safety Precautions.

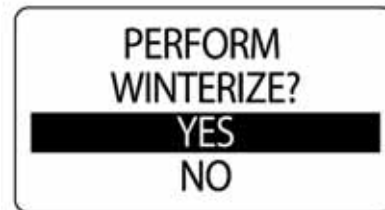
To winterize the engine, enter the SYSTEM menu, then:

- 1.) Use the UP or DOWN buttons to select WINTERIZE.
- 2.) Press and hold the MODE button to enter the selection.

The LCD screen will display message "PERFORM WINTERIZE?".

- 3.) Press and hold the MODE button to enter WINTERIZATION.

The LCD screen will display the message "RECEIVING DATA TO START THE PROCESS".



010042



010043

4.) Engage NEUTRAL only button on throttle and advance the THROTTLE ONLY to at least 50%, when prompted.

The LCD screen will display "WINTERIZE IN PROGRESS".

When complete the LCD screen will display WINTERIZE COMPLETE.

Do not adjust throttle or engine until winterization is complete and the engine has shut OFF.

5.) Repeat these steps from each *ICON* PRO tachometer for all other engines in the system.



ADVANCE  
THROTTLE  
TO 50%



WINTERIZE  
IN  
PROGRESS

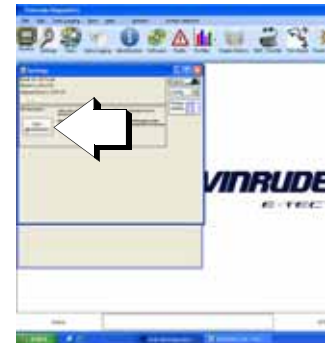
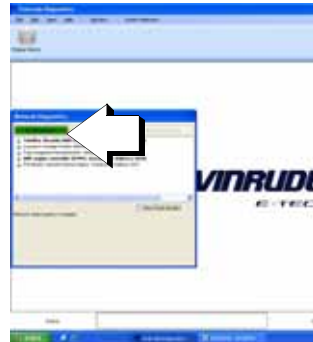


WINTERIZE  
COMPLETE!

# Winterizing the Engine (G2 Engines)

The engine must be running to use this feature. Refer to the **Outboard Operator's Guide** for complete procedure and Safety Precautions.

- 1.) Attach a laptop equipped with EvDiag 6 to the diagnostic port on the outboard.
- 2.) Open EvDiag 6 and click on the Connect to the Network box.
- 3.) Once EvDiag 6 has established communication with the network, click on the BRP engine controller (EMM) option.
- 4.) Close the Engine Report box when it appears and click on Settings at the top of the screen.
- 5.) When the Settings box appears, click on the Start Winterization box.
- 6.) The engine will run the winterization process and the gauge will display, WINTERIZATION IN PROGRESS.
- 7.) When the winterization process is complete, the gauge will return to the home screen and the engine will shut off.





# FUEL SETUP FOR G1 ENGINES

Use the FUEL SETUP menu to add fuel, reset the fuel used, set the tank size, select the fuel sender, calibrate the fuel sender, set the low fuel warning and select the fuel remaining source for each tank.

The Totalizer settings are used to reset the Totalizer fuel data and to set the Totalizer low fuel warning.

To enter the FUEL SETUP menu:

- 1.) Press the MODE button once.
- 2.) Use the UP or DOWN buttons to select EDIT MENU.
- 3.) Press and hold the MODE button to enter the selection.
- 4.) Use the UP or DOWN buttons to select FUEL SETUP.
- 5.) Press and hold the MODE button to enter the selection.

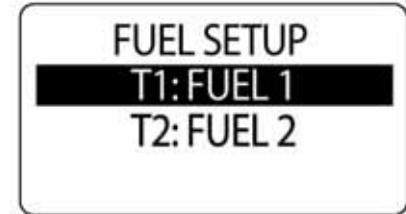


010051

## Fuel Tank Setup

Use FUEL SETUP to set fuel tank capacity, select fuel sender, calibrate fuel sender, set the low fuel warning, add fuel, reset fuel used, and select fuel remaining source for each fuel tank. To perform these tasks enter the FUEL SETUP menu, then:

- 1.) Use the UP or DOWN buttons to select the appropriate fuel tank.
- 2.) Press and hold the MODE button to enter the selection.
- 3.) Follow the steps in the next sections.



009997

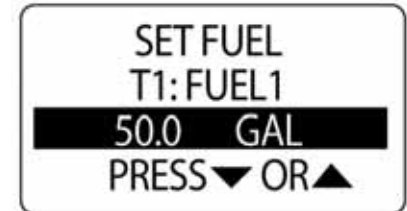
## Fuel Tank Capacity

Enter the FUEL SETUP menu then:

- 1.) Use the UP or DOWN buttons to select TANK SIZE.
- 2.) Press and hold the MODE button to enter the TANK SIZE menu.
- 3.) Use the UP or DOWN buttons to set the capacity of that fuel tank.
- 4.) Press and hold the MODE button to save the setting.
- 5.) The LCD screen will display SETTING SAVED! and the gauge will issue an audible beep.

**NOTE:** Holding the UP or DOWN button will increase or decrease the amount in a more rapid fashion.

010052



010053

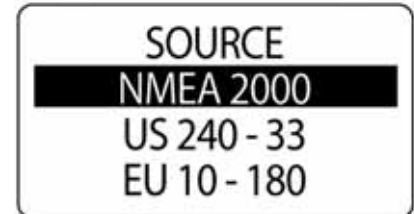
## Select Fuel Sender Source

The *ICON* gauge package can monitor the fuel sender from the *NMEA 2000* buss or from an analog input. Fuel level can also be calculated using engine fuel flow data. To set the fuel sender SOURCE:

- 1.) Use the UP or DOWN buttons to select SOURCE.
- 2.) Press and hold the MODE button to enter the selection.
- 3.) Use the UP or DOWN buttons to select the correct fuel sender source.
- 4.) Press and hold the MODE button to save the setting.



010054



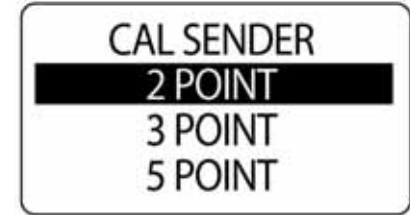
010055

## Calibrate Fuel Sender

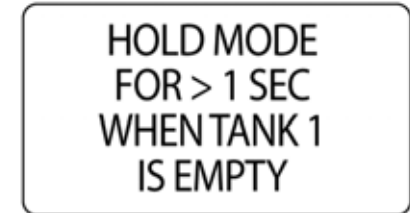
Fuel tank senders can be calibrated using a 2, 3 or 5-point calibration. To begin the calibration the fuel tank **MUST** be empty. Use a 5-point calibration to achieve the best fuel level accuracy. To calibrate the fuel sender, enter the FUEL SETUP menu then:

- 1.) Use the UP or DOWN buttons to select CAL SENDER.
- 2.) Use the UP or DOWN buttons to select the desired 2, 3 or 5-point calibration method.
- 3.) Press and hold the MODE button to begin the calibration process.
- 4.) Follow the on-screen prompts for each step of the calibration process. When the calibration points are saved the LCD will display SETTING SAVED! and the gauge will issue an audible beep.

**IMPORTANT:** Be sure to press and hold the MODE button to save each calibration point.



010056



010057

## LOW FUEL Warning

The low warning alarm is used to let the user know when the tank has emptied below a set volume.

To set the LOW WARN alarm, enter the FUEL SETUP menu and then:

- 1.) Use the UP or DOWN buttons to select LOW WARN.
- 2.) Press and hold the MODE button to enter the selection.
- 3.) Press the UP button to increase, or press the DOWN button to decrease the low fuel warning.
- 4.) Press and hold the MODE button to save the selection.
- 5.) The LCD screen will display SETTING SAVED! and the gauge will issue an audible beep.



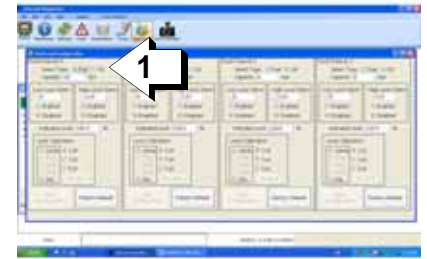
010058



010059

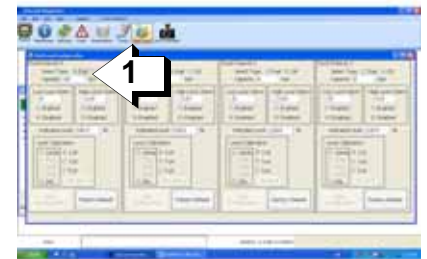
# Tank Setup for G2 Engines

- 1.) Connect a laptop equipped with EvDiag6 to the diagnostic port of the outboard.
- 2.) Open EvDiag6 and connect to the network.
- 3.) Select the *Teleflex Throttle/Shift Control* option.
- 4.) Click on the Fluid Levels box at the top of the screen. This will bring up the fluid level configuration box where the instances for each tank will need to be configured.



1. Fuel/Oil options

009975



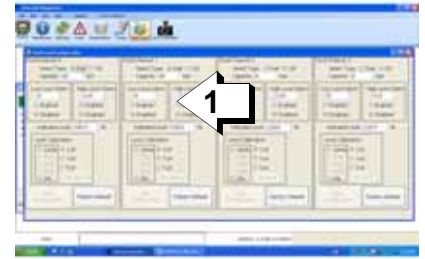
1. Capacity box

009975

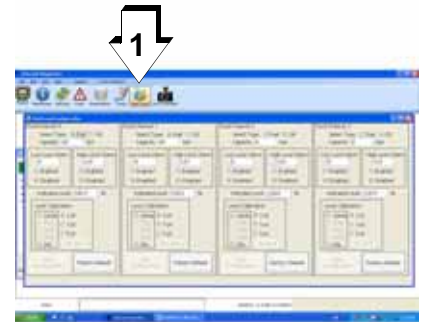
5.) Select Fuel or Oil for each tank within the proper Fluid Channel box.

**NOTE:** Channels 0 and 1 are set to fuel by default while channels 2 and 3 are set to oil by default.

6.) Set the capacity of each tank by entering the value into the proper capacity box.



1. *Teleflex Throttle/Shift Control* 009975



1. *Fluid Levels box* 009975



7.) Enter the Low and High Level Alarms into the *Low Level Alarm* and *High Level Alarm* boxes within the proper *Fluid Channel* box.

**NOTE:** Setting these values will trigger an alarm when the tanks reach the set high and low values.

8.) Set the tank level calibration for each tank within the proper *Fluid Channel* box.

Each tank can be set to either 2, 3 or 5 point calibration.

When the level sender is set to a 2 point calibration, the level sender will read only 100% and 0%.

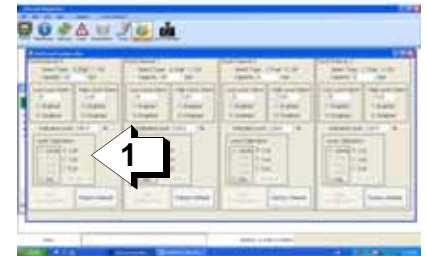
When the level sender is set to a 3 point calibration, the level sender will read 100%, 50% and 0%.

When the level sender is set to a 5 point calibration, the level sender will read 100%, 75%, 50%, 25% and 0%.

9.) Save the settings by clicking on the *Save Configuration* box or reset all of the settings by clicking on the *Factory Default* box.



1. *Low and High Level Alarm* boxes 009975



1. *Level Calibration* box 009975

## Fuel Remaining Source

The *ICON* 2 inch fuel gauge and the fuel data field displayed by the LCD screen on the tachometer display the fuel level determined by the fuel REMAINING SOURCE.

**IMPORTANT:** Selection of ENGINE requires correct management of FUEL ADDED at every fill-up.

- 1.) Use the UP or DOWN buttons to select REMAIN SRC.
- 2.) Press and hold the MODE button to enter the selection.
- 3.) Use the UP or DOWN buttons to select the Remaining Source.
  - Select SENDER for fuel tanks that use a sender.
  - Select ENGINE for fuel tanks that do not use a sender.
- 4.) Press and hold the MODE button to save the selection.



010060



010061

# Max Speed

The Max Speed function records the highest speed during the last period sin

To view or reset the max speed enter the EDIT menu then:

- 1.) Use the UP or DOWN buttons to select the MAX SPEED.
- 2.) Press and hold the MODE button to enter the selection.
- 3.) Follow the steps in the next sections.

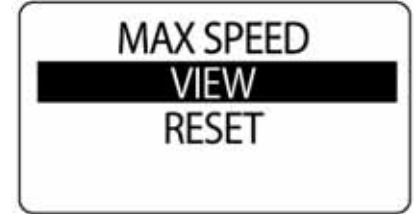


010062

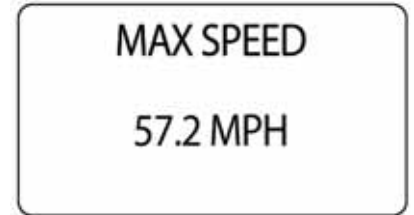
## View Max Speed

- 1.) Use the UP or DOWN buttons to select VIEW.
- 2.) Press and hold the MODE button to enter the selection.

**NOTE:** The MAX SPEED is displayed on the ICON tachometer display.



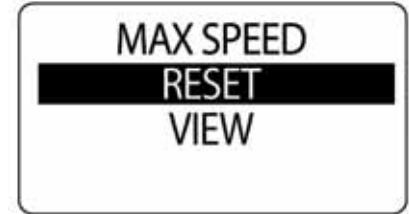
010063



010064

## Resetting Max Speed

- 1.) Use the UP or DOWN buttons to select RESET.
- 2.) Press and hold the MODE button to enter the selection.
- 3.) Use the UP or DOWN buttons to select YES to reset the Max Speed.
- 4.) Select NO to exit.
- 5.) Press and hold the MODE button to reset the data. The LCD screen will display SETTING SAVED! and the gauge will issue an audible beep.



010065



009970

## **Available Data Pages**

There are twelve available data pages. It is up to the operator to choose the data pages to be displayed on the home screens.

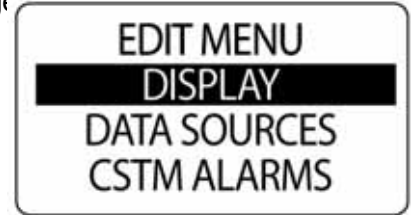
For a full list of available data pages to be displayed on the twelve data pages please reference the full list on page 138 of this manual.

# Display Settings

The Display Settings control the data page's appearance and functionality. You can change the number of data pages shown, edit the fields that are shown on each page, turn ON or OFF the auto scrolling feature and to set the display units.

To change the display setting:

- 1.) Press the MODE button once.
- 2.) Use the UP or DOWN buttons to select the EDIT MENU.
- 3.) Press and hold the MODE button to enter the selection.
- 4.) Use the UP and DOWN buttons to select DISPLAY.
- 5.) Press and hold the MODE button to enter the selection.



010066

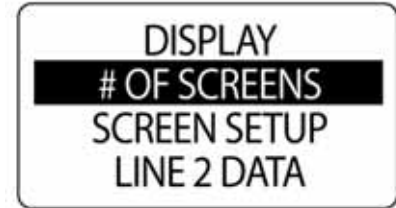
## Set Number of Data Pages

There are twelve default data pages. Each data page can contain up to two data fields. To add or delete data pages enter the DISPLAY menu, then:

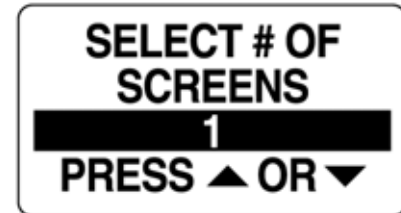
- 1.) Use the UP or DOWN buttons to select # OF SCREENS.
- 2.) Press and hold the MODE button to enter the selection.
- 3.) Press the UP button to increase, or press the DOWN button to decrease the number of data pages.

The minimum number of data pages is one.

Press and hold the MODE button to save the selection. The LCD will display SETTING SAVED! and the gauge will issue an audible beep.



010067



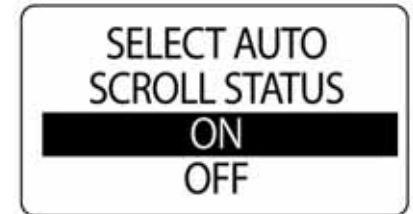
010068



## Data Page Auto–Scrolling

The data page AUTO SCROLL feature, when active, automatically scrolls through the data pages at a user-defined interval. To setup and activate auto scroll, enter the DISPLAY menu, then:

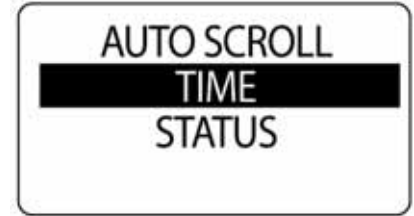
- 1.) Use the UP or DOWN buttons to select AUTO SCROLL.
- 2.) Press and hold the MODE button to enter the selection.
- 3.) Use the UP or DOWN buttons to select STATUS.
- 4.) Press and hold the MODE button to enter the selection.
- 5.) Use the UP or DOWN buttons to select ON or OFF.
- 6.) Press and hold the MODE button to save the status selection.



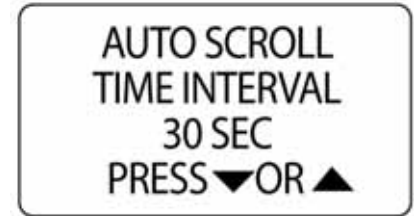
## To Change The Auto Scroll Interval:

- 1.) Use the UP or DOWN buttons to select TIME.
- 2.) Press and hold the MODE button to enter the selection.
- 3.) Press the UP button to increase the interval.
- 4.) Press the DOWN button to decrease the interval.
- 5.) Press and hold the MODE button to enter the selection.
- 6.) Press and hold the MODE button to save the interval setting.
- 7.) The LCD screen will display SETTING SAVED! and the gauge will issue an audible beep.

**NOTE:** The minimum Auto Scroll interval is 1 second while the maximum interval is 60 seconds.



010072

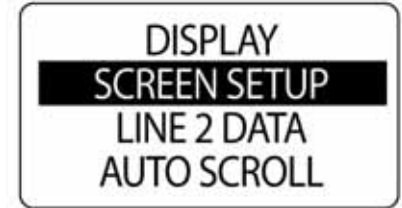


010073

# Screen Setup

Use Screen Setup to select the data fields to be displayed. To edit the data fields displayed, enter the DISPLAY menu, then:

- 1.) Use the UP or DOWN buttons to select SCREEN SETUP.
- 2.) Press and hold the MODE button to enter the selection.
- 3.) Use the UP or DOWN buttons to select the page number to edit the data fields.
- 4.) Press and hold the MODE button to enter the page to edit.

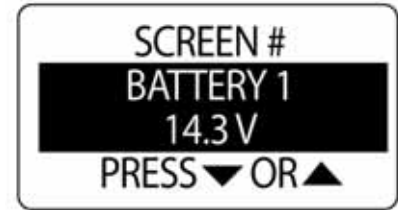


010074



010075

- 5.) Use the UP or DOWN buttons to select the data field to display on line one.
- 6.) Press and hold the MODE button to save the selection.
- 7.) The LCD screen will display SETTING SAVED! and the gauge will issue an audible beep.



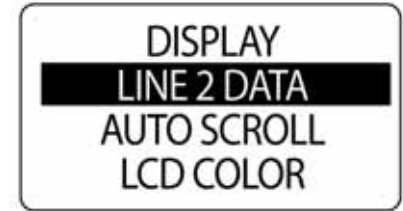
010076

## Setting the Line 2 Data

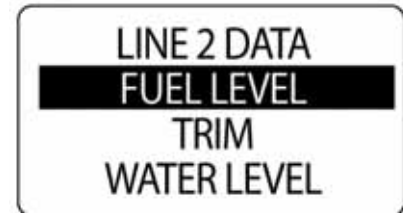
The ICON tachometer can show limited data on the second line of the LCD display. To change the Line 2 data, enter the DISPLAY menu then:

- 1.) Use the UP and DOWN buttons to select LINE 2 DATA
- 2.) Press and hold the MODE button to enter the selection.
- 3.) Use the UP and DOWN button to select the data that will show in the line 2 display.
- 4.) Hold the MODE button to save the selection.
- 5.) The LCD will display SETTING SAVED! and the gauge will issue an audible beep.

**NOTE:** The choices of the Line 2 Data are Fuel Level, Trim, Load, Throttle, Water Level, Oil Level, Ballast, Baitwell, Freshwater, Grey Water, Black Water and OFF.



010077



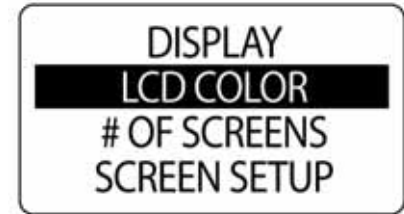
010078

## LCD Color

The ICON gauge package has the ability to change the color of the LCD back light. To change the color of the LCD back lighting, enter the DISPLAY menu then:

- 1.) Use the UP and DOWN buttons to select the LCD COLOR.
- 2.) Press and hold the MODE button to enter the selection.
- 3.) Use the UP or DOWN buttons to select the desired colors.
- 4.) Press and hold the MODE buttons to save the selection.

**NOTE:** The color choices for the *ICON* gauge package are WHITE, YELLOW, GREEN YELLOW, GREEN, DARK SEA GREEN, CYAN, BLUE, PURPLE, PINK, GOLDENROD and TAN.



010079

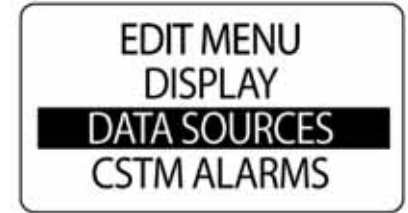


010080

# Data Sources for G1 Engines

Use the DATA SOURCES menu to set the engine instance and set or reset the maintenance interval for the engine. Use the data sources menu to set instance ID for 2 inch *ICON* Battery and Oil Level gauges. The *ICON* tachometer is capable of using up to five analog senders for Fuel, Trim, Ballast, Bait Well, Rudder, Fresh Water, Gray Water or Black Water. Refer to the current *ICON Gauge Installation Guide* for installation instructions. To enter the data sources menu:

- 1.) Press the MODE button once.
- 2.) Use the UP or DOWN buttons to select EDIT MENU.
- 3.) Press and hold the MODE button to enter the selection.
- 4.) Use the UP or DOWN buttons to select DATA SOURCES.
- 5.) Press and hold the MODE button to enter the selection.



010081

# Tanks

The Tanks data source is where the source of the information that is received from a certain tank will display.

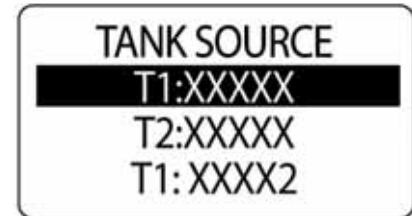
The ICON tachometer can display information from an analog (US 240-33, EU 10-180 Fuel Senders), or digital sources (Bus DATA).

To make changes to the tank's data source, enter the DATA SOURCES menu then:

- 1.) Use the UP or DOWN buttons to select TANKS.
- 2.) Press and hold the MODE button to enter the selection.
- 3.) Use the UP and DOWN buttons to select the TANK# in which to make changes.



010082

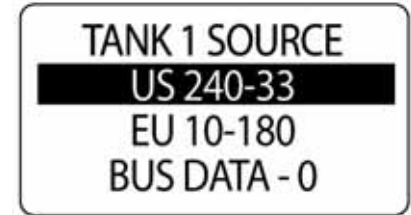


010083



- 4.) Press and hold the MODE button to enter the selection.
- 5.) Use the UP or DOWN buttons to select TANK SOURCE.
- 6.) Press and hold the MODE button to save the new selection. The LCD will display SETTING SAVED! and the gauge will issue an audible beep.
- 7.) Repeat for all tanks.

**IMPORTANT:** If an analog source is selected, the pin the analog signal is attached to will need to be specified.



010084



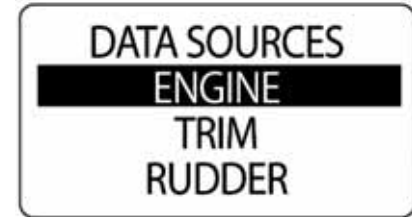
010085

## Engine

The ENGINE data source was set during system setup. To change the ENGINE ID enter the DATA SRCS menu, then:

- 1.) Use the UP or DOWN buttons to select ENGINE.
- 2.) Press and hold the MODE button to enter the selection.
- 3.) Use the UP or DOWN buttons to select ENGINE ID.
- 4.) Press and hold the MODE button to enter the selection.
- 5.) Use the UP or DOWN buttons to select the new ENGINE ID.
- 6.) Press and hold the MODE button to save the new ENGINE ID.

**NOTE:** If there is only one engine, the engine ID is SINGLE.



010086



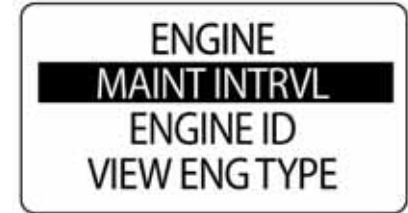
010087

## Engine Maintenance Interval

The *ICON* tachometer can monitor the engine hours and notify the operator when maintenance is needed. To set the MAINTENANCE INTERVAL enter the DATA SRCS menu, then:

- 1.) Use the UP or DOWN buttons to select ENGINE.
- 2.) Press and hold the MODE button to enter the selection.
- 3.) Use the UP or DOWN buttons to select MAINT INTRV.
- 4.) Press and hold the MODE button to enter the selection.
- 5.) Press the UP button to increase, or press the DOWN button to decrease the Maintenance Interval.
- 6.) Press and hold the MODE button to save the setting.

**NOTE:** A pop up window will appear when the pre-set maintenance interval has been reached.



010088



010089

## Reset the Engine Maintenance Interval

To reset the engine maintenance interval, enter the DATA SOURCES menu, then:

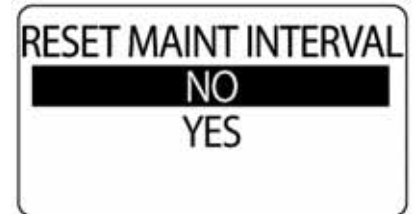
- 1.) Use the UP or DOWN buttons to select ENGINE.
- 2.) Press and hold the MODE button to enter the selection.
- 3.) Use the UP or DOWN buttons to select RESET INTRV.
- 4.) Press and hold the MODE button.

At the prompt: RESET INTERVAL?

- 5.) Use the UP or DOWN buttons to select YES to reset the maintenance interval, or select NO to exit.



010090

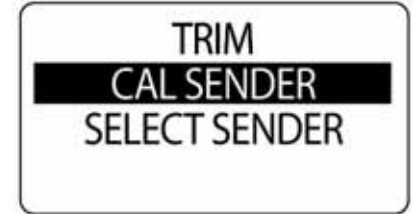


010091

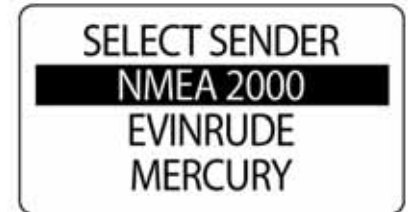
# Trim

The *ICON* gauge package can monitor multiple trim senders. The default trim sender is set to *NMEA 2000*. To change the trim sender setting, enter the DATA SOURCES menu, then:

- 1.) Use the UP or DOWN buttons to select TRIM.
- 2.) Press and hold the MODE button to enter the selection.
- 3.) Use the UP or DOWN buttons to select TRIM SENDER.
- 4.) Press and hold the MODE button to enter the selection.
- 5.) Use the UP or DOWN buttons to select the desired trim sender.
- 6.) Press and hold the MODE button to save the selection.



010092

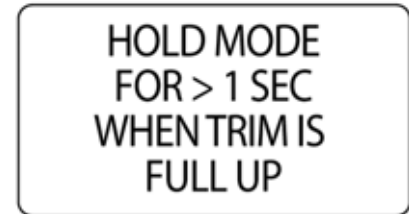
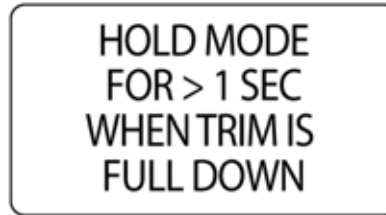
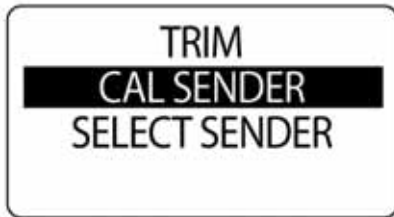


010093

## Calibrate Trim Sender

Use the *ICON* tachometer to calibrate the trim sender. To calibrate the trim sender, enter the DATA SRCS menu, then:

- 1.) Use the UP or DOWN buttons to select TRIM.
- 2.) Press and hold the MODE button to enter the selection.
- 3.) Use the UP or DOWN buttons to select CAL SENDER.
- 4.) Press and hold the MODE button to enter calibration.
- 5.) The LCD screen displays: HOLD MODE FOR > 1 SEC WHEN TRIM FULL DOWN,
- 6.) Make sure the engine is in the full trim DOWN position. Then press and hold the MODE button to save the trim DOWN position.
- 7.) The LCD screen displays: SETTING SAVED!



- 8.) The LCD Screen displays: HOLD MODE FOR > 1 SEC WHEN TRIM FULL UP
- 9.) Make sure the engine is in the full trim up position.
- 10.) Press and hold the MODE button to save the trim up position.
- 11.) The LCD screen will display SETTING SAVED! and the gauge will issue an audible beep.
- 12.) The trim sender is now calibrated.

## Battery (G1 Engines)

Use the Battery data source to determine the number of batteries that are installed in the system. By default, the battery instance matches the engine ID. The number of batteries is set to the number of engines selected during system setup. To change battery settings, enter the DATA SOURCES menu then:

- 1.) Use the UP or DOWN buttons to select BATTERY.
- 2.) Press and hold the MODE button to enter the selection.
- 3.) Use the UP or DOWN buttons to select the number of batteries.
- 4.) Press and hold the MODE button to save the selection.
- 5.) The LCD screen will display SETTING SAVED! and the gauge will issue an audible beep.



010097



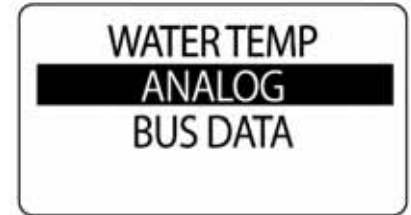
009970



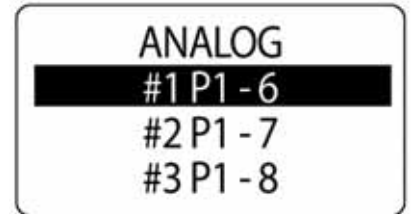
# Water Temperature

Use the Water Temp Data Source to determine the source of the Water temperature used in the system. To change the water temperature send data source, enter the DATA SOURCES menu then:

- 1.) Use the UP or DOWN buttons to select WATER TEMP
- 2.) Press and hold the MODE button to enter the selection.
- 3.) Use the UP or DOWN buttons to select the WATER TEMP sender type used in the system.
- 4.) Press and hold the MODE button to enter the selection.



010098



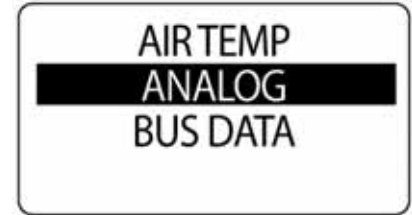
010099

# Air Temp

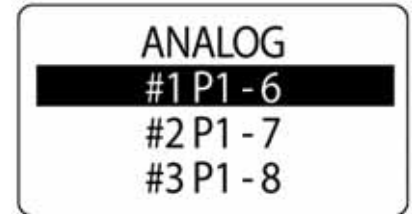
Use the Air Temp data source to determine the source of the air temperature used in the system. To change the air temperature data source, enter the DATA SOURCES menu then:

- 1.) Use the UP or DOWN buttons to select AIR TEMP
- 2.) Press and hold the MODE button to enter the selection
- 3.) Use the UP or DOWN buttons to select the AIR TEMP sender type which is used in the system
- 4.) Press and hold the MODE button to enter the selection.
- 5.) The LCD screen will display SETTING SAVED! and the gauge will issue an audible beep.

**NOTE:** If an analog source is chosen, select the proper pin that the analog signal is attached to in the tachometer.



010100



010099

# Speed

Use the Battery data source to determine the number of batteries that are installed in the system. By default, the battery instance matches the engine ID. The number of batteries is set to the number of engines selected during system setup. To change battery settings, enter the DATA SOURCES menu then:

- 1.) Use the UP or DOWN buttons to select BATTERY.
- 2.) Press and hold the MODE button to enter the selection.
- 3.) Use the UP or DOWN buttons to select the number of batteries.
- 4.) Press and hold the MODE button to save the selection.
- 5.) The LCD screen will display SETTING SAVED! and the gauge will issue an audible beep.



010101

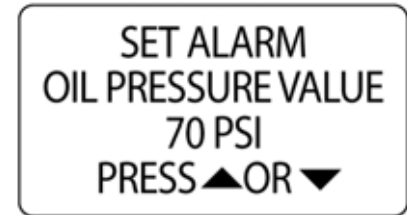
# Steering Angle

Use the Battery data source to determine the number of batteries that are installed in the system. By default, the battery instance matches the engine ID. The number of batteries is set to the number of engines selected during system setup. To change battery settings, enter the DATA SOURCES menu then:

- 1.) Use the UP or DOWN buttons to select BATTERY.
- 2.) Press and hold the MODE button to enter the selection.
- 3.) Use the UP or DOWN buttons to select the number of batteries.
- 4.) Press and hold the MODE button to save the selection.
- 5.) The LCD screen will display SETTING SAVED! and the gauge will issue an audible beep.



010102



010103

# Pop Up Alerts

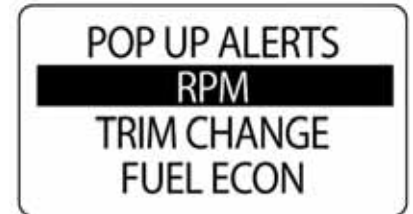
The POP-UPS feature alerts users when changes occur in a monitored data field. The ICON tachometer has Pop Ups available for RPM, TRIM CHANGE, FUEL ECONOMY, DURATION, EST RANGE and SPEED.

The pop up default setting is OFF. To turn ON pop ups and set the threshold for data fields:

- 1.) Press the MODE button once.
- 2.) Use the UP or DOWN buttons to select EDIT MENU.
- 3.) Press and hold the MODE button to enter the selection.
- 4.) Use the UP or DOWN buttons to select POP UP ALERTS.
- 5.) Press and hold the MODE button to enter the selection.



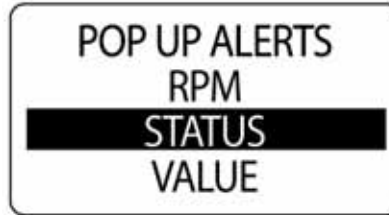
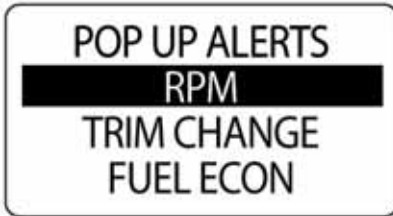
010104



010105

## To Turn the Pop Up ON or OFF:

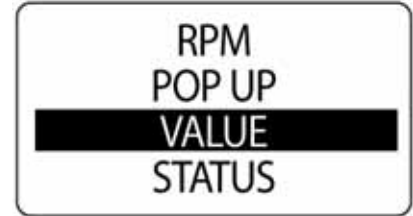
- 1.) Use the UP or DOWN buttons to select the desired POP UP alert.
- 2.) Press and hold the MODE button to enter the selection.
- 3.) Use the UP or DOWN buttons to select STATUS.
- 4.) Press and hold the MODE button to save the selection.
- 5.) Use the UP or DOWN buttons to select ON or OFF.
- 6.) Press and hold the MODE button to save the selection.



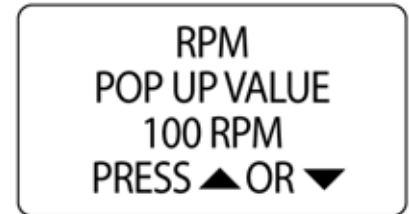
## To Set the Pop Up Threshold Value:

The POP UP threshold value is the value that will trigger a POP UP alert to activate.

- 1.) Use the UP or DOWN buttons to select VALUE.
- 2.) Press and hold the MODE button to enter the selection.
- 3.) Use the UP or DOWN buttons to set the desired value to activate the pop-up.
- 4.) Press and hold the MODE button to save the setting.
- 5.) The LCD screen will display SETTING SAVED!



010109



010110

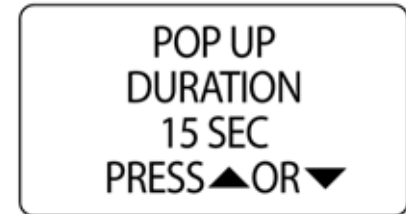
## Pop Up Duration

Set the pop up DURATION to define the amount of time a pop up screen remains visible before returning to the current data page. To set the pop up duration enter the POP UPS menu, then:

- 1.) Use the UP or DOWN buttons to select DURATION.
- 2.) Press and hold the MODE button to enter the selection.
- 3.) Press the UP button to increase or the press the DOWN button to decrease the pop up duration.
- 4.) Press and hold the MODE button to save the setting.



010111



010112



## Setting Custom Alarms

A custom alarm can be set for select data fields present in the tachometer.

To set a custom pop up:

- 1.) Press and hold the MODE button to enter the Menu Options.
- 2.) Use the UP or DOWN buttons to select CSTM ALARMS.
- 3.) Press and hold the MODE button to make the desired selection.
- 4.) Use the UP or DOWN buttons to select the desired data field.
- 5.) Press and hold the MODE button to save the selection.
- 6.) Continue with the steps in the next sections.

**NOTE:** Available data fields are OIL PRESURE and ENGINE TEMPERATURE.



010113



010114

## Turn a Custom Alarm ON or OFF

- 1.) Use the UP or DOWN buttons to select STATUS
- 2.) Press and hold the MODE button to enter the selection.
- 3.) Use the UP or DOWN button to select ON or OFF.
- 4.) Press and hold the MODE button to save the selection.



010115

## Set Custom Alarm Threshold Value

The CUSTOM ALARMS threshold value is the value that will trigger a CUSTOM ALARM alert to activate.

- 1.) Use the UP or DOWN button to select VALUE.
- 2.) Press and hold the MODE button to enter the selection.
- 3.) Use the UP or DOWN buttons to set the desired value to activate the pop-up.
- 4.) Press and hold the MODE button to save the setting.



010116

# Data Sources for G2 Engines

Use the DATA SOURCES menu to set the tank source, remaining source, view engine type, select and calibrate the trim sender and choose the rudder source. To enter the data sources menu:

- 1.) Press the MODE button once.
- 2.) Use the UP and DOWN to scroll to EDIT MENU.
- 3.) Press and hold the MODE button to enter the EDIT MENU.
- 4.) Use the UP and DOWN buttons to scroll to DATA SOURCES.
- 5.) Press and hold the MODE button to enter the DATA SOURCES menu.



010117



010118

# Tanks

The Tanks data source is where the source of the information that is received from a certain tank will display.

The tanks that are available for changes are:

- LIVEWELL 1,2 AND 3,
- GREYWATER 1,2 AND 3
- BALLAST 1, 2, AND 3
- OIL LEVEL 9, 10 AND 11
- FRESHWATER 1, 2 AND 3
- BLACKWATER 1, 2 AND 3



010119

To make changes to the tank's data source, enter the DATA SOURCES menu then:

- 1.) Use the UP or DOWN buttons to select TANKS.
- 2.) Press and hold the MODE button to enter the selection.
- 3.) Use the UP and DOWN buttons to select the TANK# in which to make changes.



010120

## Remain Source

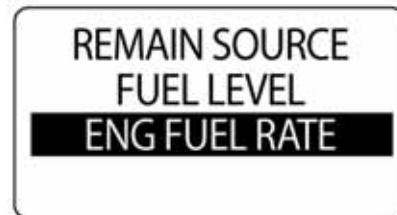
The Remain Source menu is where the remaining fuel source or the engine fuel rate can be chosen.

To make changes to the REMAIN SOURCE menu, enter the DATA SOURCES menu then:

- 1.) Use the UP or DOWN buttons to choose FUEL LEVEL or ENG. FUEL RATE.
- 2.) Press and hold the MODE button to enter the selection.
- 3.) Use the UP and DOWN buttons to make changes to the specified selection.



010121



010122

# Engine

The Engine menu is where the engine type can be viewed, the intervals can be reset and the maintenance intervals can be reset.

To make changes to the ENIGNE menu, enter the DATA SOURCES menu then:

1.) Use the UP or DOWN buttons to choose VIEW TYPE, RESET INTERVAL, MAINTENANACE INTERVALS and ENGINE ID

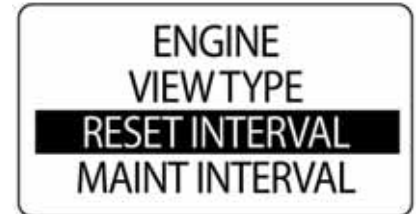
- VIEW TYPE - Choose from g1 or G2.
- RESET INTERVAL - Reset selected intervals.
- MAINT INTERVALS - Change the set maintenance intervals.
- ENGINE ID - Choose from Single or Twin.

2.) Press and hold the MODE button to enter the selection.

3.) Use the UP and DOWN buttons to make changes to the specified selection.



010123



010124

# Trim

The ICON tachometer can monitor multiple trim senders. By default the trim sender is set to NMEA 2000. To change the trim sender setting, enter the DATA SOURCES menu then:

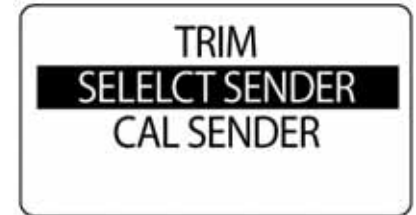
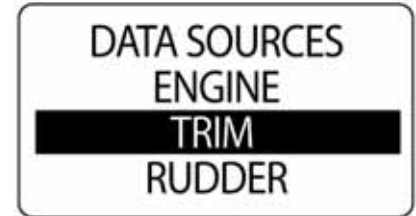
- 1.) Use the UP or DOWN buttons to select TRIM.
- 2.) Press and hold the MODE button to enter the selection.
- 3.) Use the UP or DOWN buttons to select SELECT SENDER.
- 4.) Press and hold the MODE button to enter the selection.
- 5.) Use the UP or DOWN buttons to select the desired trim sender.
- 6.) Press and hold the MODE buttons to save the selection.

010125

## Calibrate Trim Sender:

- 1.) Use the UP or DOWN buttons to select TRIM.
- 2.) Press and hold the MODE button to enter the selection.
- 3.) Use the UP or DOWN buttons to select CAL SENDER.
- 4.) Press and hold the MODE button to enter calibration.
- 5.) The LCD screen displays: HOLD MODE FOR > 1 SEC WHEN TRIM FULL DOWN,
- 6.) Make sure the engine is in the full trim DOWN position. Then press and hold the MODE button to save the trim DOWN position.
- 7.) The LCD screen displays: SETTING SAVED!

010126



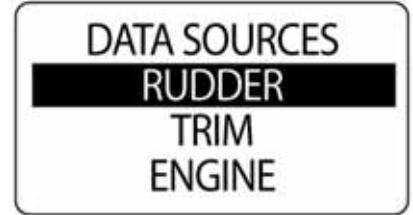


# Rudder

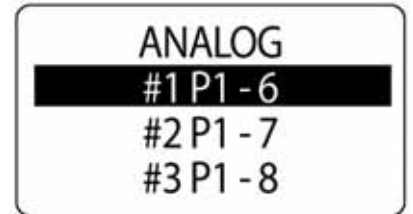
The RUDDER menu is where the rudder source selection can be adjusted.

To make changes to the RUDDER menu, enter the DATA SOURCES menu then:

- 1.) Use the UP or DOWN buttons to choose the proper pin selection.
- 2.) Press and hold the MODE button to save the selection.



010127

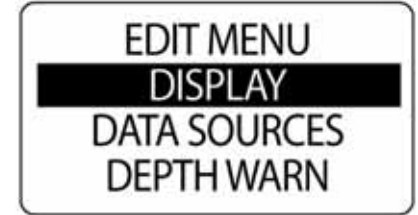


010099

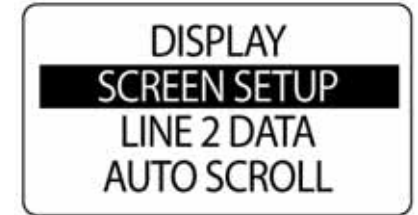
## Battery (G2 Engines)

Use the Battery data source to determine the number of batteries that are installed in the system. By default, the battery instance matches the engine ID. The number of batteries is set to the number of engines selected during system setup. To access the batteries showing on the gauge:

- 1.) Press the MODE button once.
- 2.) Use the UP and DOWN buttons to scroll to EDIT MENU.
- 3.) Press and hold the MODE button to enter the EDIT MENU.
- 4.) Use the UP and DOWN buttons to scroll to DISPLAY.
- 5.) Press and hold the MODE buttons to enter the DISPLAY menu.



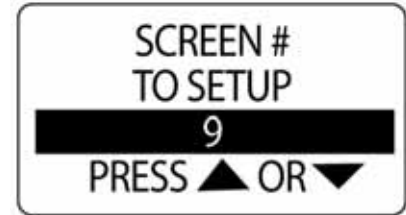
010128



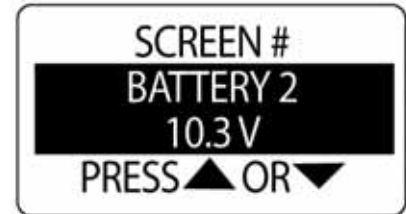
010129

- 6.) Use the UP and DOWN buttons to change the screen number to setup.
- 7.) Press and hold the MODE button to save the selection.
- 8.) Use the UP and DOWN buttons to choose which battery number will display on the selected screen.

**IMPORTANT:** The battery numbers are the same as the set engine instances.



010130



010131

## Depth Warning (If Equipped)

If equipped with a *NMEA 2000* depth sounder, custom pop ups for Shallow Water and Deep Water can be set. For accurate warnings, set the KEEL OFFSET for the boat. To set depth alarms enter the pop ups CSTM ALRMS menu, then:

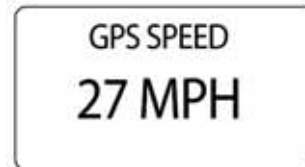
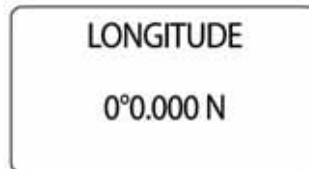
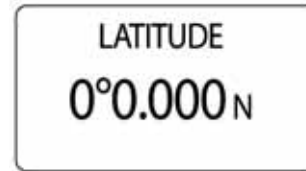
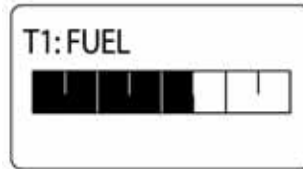
- 1.) Use the UP or DOWN buttons to select DEPTH WARN.
- 2.) Press and hold the MODE button to enter the selection.
- 3.) Use the UP or DOWN buttons to select SHALLOW, DEEP WATER or KEEL OFFSET.
- 4.) Press and hold the MODE button to enter the selection.
- 5.) Use the UP or DOWN buttons to set the desired depth.
- 6.) Press and hold the MODE button to save the setting.

# **Speedometer Operation**

# Default Pages

When the self-test is complete the *ICON* speedometer displays the default data page. The factory default data pages are shown below.

Press the UP or DOWN buttons to scroll through the default display pages.



# Edit Menu Options

Use EDIT MENU to change *ICON* gauge settings. The speedometer edit menu options are:

- SYSTEM:** Use to make global speedometer changes.
- DISPLAY:** Use to edit data pages.
- DATA SRCS:** Used to set data sources.
- MAXSPEED:** Use to view/reset maximum speed recorded.

- 1.) Press the MODE button once to display the Menu Options.
- 2.) Use the UP or DOWN buttons to select the desired menu option.
- 3.) Press and hold the MODE button to enter the selected menu option.

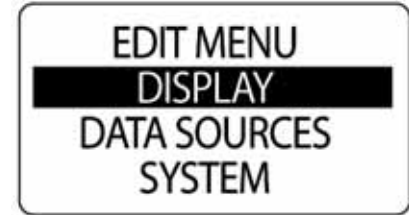


010138

# SYSTEM

Use the SYSTEM menu to adjust audio settings, perform a self-test or master reset, and to view the current software version for the speedometer.

- 1.) Press the MODE button once.
- 2.) Use the UP or DOWN buttons to select SYSTEM.
- 3.) Press and hold the MODE button to enter the selection.
- 4.) Use the UP or DOWN buttons to select AUDIO or MASTER RESET.
- 5.) Press and hold the MODE button to enter the selection.



010138



010139



## Audio Settings

Use the AUDIO menu to turn the horn ON or OFF for saving settings or pressing buttons.

To enter the AUDIO menu:

- 1.) Press the MODE button once.
- 2.) Use the UP or DOWN buttons to select the SYSTEM menu.
- 3.) Press and hold the MODE button to enter the selection.
- 4.) Use the UP or DOWN buttons to select AUDIO.
- 5.) Press and hold the MODE button to enter the AUDIO menu.



010139



010140

## Setting Saved

Use **SETTING SAVED** to turn the horn **ON** or **OFF** after a setting is saved in the *ICON* speedometer. To change the setting enter the **AUDIO** menu, then:

- 1.) Use the **UP** or **DOWN** buttons to select **SETTING SAVED**.
- 2.) Press and hold the **MODE** button to enter the selection.
- 3.) Use the **UP** or **DOWN** buttons to select **ON** or **OFF**.
- 4.) Press and hold the **MODE** button to save the setting. The gauge will display **SETTING SAVED!**



010025



009970

## Button Press

Use **BTN PRESS** to turn the horn **ON** or **OFF** when a button is pressed on the speedometer. To change the setting enter the **AUDIO** menu, then:

- 1.) Use the **UP** or **DOWN** buttons to select **BUTTON PRESS**.
- 2.) Press and hold the **MODE** button to enter **BUTTON PRESS**.
- 3.) Use the **UP** or **DOWN** buttons to select **ON** or **OFF**.
- 4.) Press and hold the **MODE** button to save the setting. The gauge will display **SETTING SAVED!**



010141



010142

## System Audio

Use ALL to turn the horn ON or OFF for all audio menu options. To change the setting enter the AUDIO menu, then:

- 1.) Use the UP or DOWN buttons to select ALL.
- 2.) Press and hold the MODE button to enter ALL.
- 3.) Use the UP or DOWN buttons to select ON or OFF.
- 4.) Press and hold the MODE button to save the setting. The LCD screen will display SETTING SAVED!



010026



010027

## Master Reset

Use the MASTER RESET feature to reset the speedometer to the factory default settings.

To perform a master reset, enter the SYSTEM menu, then:

- 1.) Use the UP or DOWN buttons to select MASTER RESET.
- 2.) Press and hold the MODE button to enter the selection.
- 3.) Use the UP or DOWN buttons to select YES or NO.
- 4.) Press and hold the MODE button to enter the selection.

If NO is selected the gauge will exit to the SYSTEM menu. If YES is selected continue with the next step.

A warning message will display for five seconds and the horn will beep three times. Next, the LCD screen will display the message: CONTINUE WITH RESET?

- 5.) Use the UP or DOWN buttons to select YES or NO.
- 6.) Press and hold the MODE button to enter the selection.

If NO is selected, the gauge will exit to the SYSTEM menu.

If YES is selected, the *ICON* gauge will be reset to the factory default settings.



010040



010041

## Software Version

Use the SOFTWARE feature is used to view the current version of software operating in the speedometer. This information may be useful when communicating with technical support.

To view the software version, enter the SYSTEM menu, then:

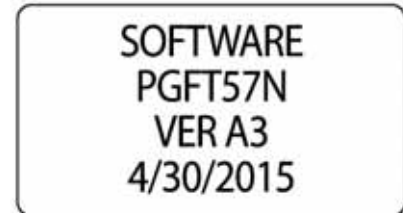
- 1.) Use the UP or DOWN buttons to select SOFTWARE.
- 2.) Press and hold the MODE button to enter the selection.

The LCD screen will display the:

- program identifier (starts with the letters “PGF”)
- revision for the program identifier
- release date for the software



010038



010039

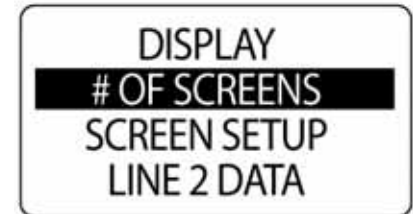
# DISPLAY

Use the DISPLAY menu to control the appearance and functionality of data pages. Also use the display menu to set the number of data pages, edit data fields, select the default data page, and turn optional features ON or OFF. To change the display settings:

- 1.) Press the MODE button once.
- 2.) Use the UP or DOWN buttons to select DISPLAY.
- 3.) Press and hold the MODE button to enter the selection.
- 4.) Use the UP or DOWN buttons to select DISPLAY.
- 5.) Press and hold the MODE button to enter the selection.



010143



010144

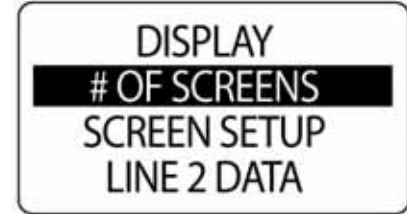
## Set Number of Data Pages

The default number of data pages is three. A data page can contain up to two data fields. To add or delete data pages enter the DISPLAY menu, then:

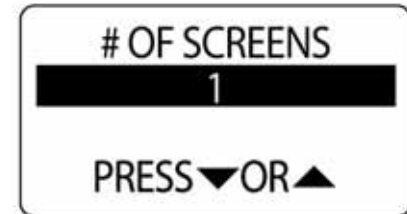
- 1.) Use the UP or DOWN buttons to select # OF SCREENS.
- 2.) Press and hold the MODE button to enter the selection.
- 3.) Press the UP button to increase, or press the DOWN button to decrease the number of data pages.

The minimum number of data pages is one and the maximum is twenty two.

- 4.) Press and hold the MODE button to save the selection.



010144



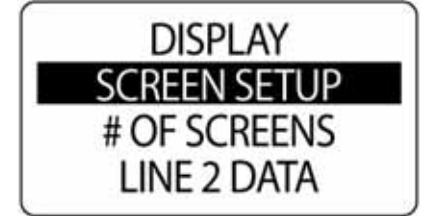
010145



## Screen Setup

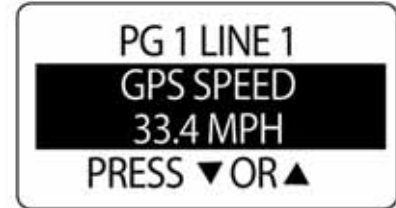
Use Screen Setup to select the data fields to be displayed. To edit the data fields displayed, enter the DISPLAY menu, then:

- 1.) Use the UP or DOWN buttons to select SCREENSETUP.
- 2.) Press and hold the MODE button to enter the selection.
- 3.) Use the UP or DOWN buttons to select the page number to edit the data fields.
- 4.) Press and hold the MODE button to enter the page to edit.



010146

- 5.) Use the UP or DOWN buttons to select the data field to display on line one.
- 6.) Press and hold the MODE button to save the selection.
- 7.) Repeat steps 4 through 6 to select the data field to display on line two of the selected data page.



010147



009970

## Data Page Auto–Scrolling

The data page AUTO SCROLL feature automatically scrolls through the data pages at a user-defined interval. To setup and activate auto scroll, enter the DISPLAY menu, then:

- 1.) Use the UP or DOWN buttons to select AUTO SCROLL.
- 2.) Press and hold the MODE button to enter the selection.
- 3.) Use the UP or DOWN buttons to select STATUS.
- 4.) Press and hold the MODE button to enter the selection.
- 5.) Use the UP or DOWN buttons to select ON or OFF.
- 6.) Press and hold the MODE button to save the status selection.



010148



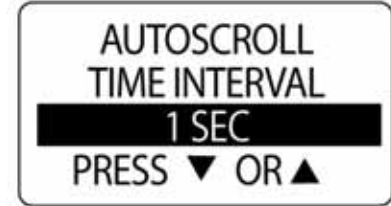
010149

### To change the Auto Scroll interval:

- 1.) Use the UP or DOWN buttons to select TIME.
- 2.) Press and hold the MODE button to enter the selection.
- 3.) Press the UP button to increase, or press the DOWN button to decrease the interval.
- 4.) Press and hold the MODE button to enter the selection.

The minimum Auto Scroll interval is one second while the maximum interval is 60 seconds.

- 5.) Press and hold the MODE button to save the interval setting.



010150

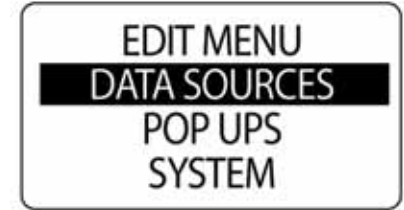


009970

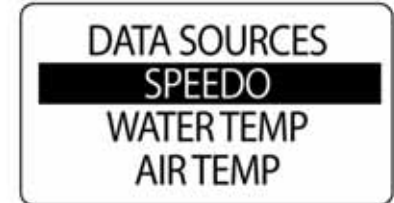
# DATA SOURCES

Use the DATA SOURCES menu to set up to five analog senders for Speed, Sea Water temperature and Air Temperature. Refer to the current *ICON Gauge Installation Guide* for installation instructions. To enter the data sources menu:

- 1.) Press the MODE button once.
- 2.) Use the UP or DOWN buttons to select EDIT MENU.
- 3.) Press and hold the MODE button to enter the selection.
- 4.) Use the UP or DOWN buttons to select DATA SRCS.
- 5.) Press and hold the MODE button to enter the selection.



010151



010152

## Select Speedometer Source

The default SPEEDOMETER source is set to GPS. To change the speedometer source enter the DATA SRCS menu, then:

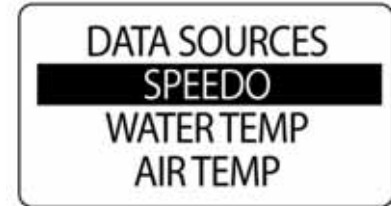
- 1.) Use the UP or DOWN buttons to select SPEEDO.
- 2.) Press and hold the MODE button to enter the selection.
- 3.) Use the UP or DOWN buttons to select PADL WHEEL, GPS or BUS DATA.

**IMPORTANT:** Set the SPEEDO source to PADL WHEEL when an analog paddle wheel transducer is used as the speed input source.

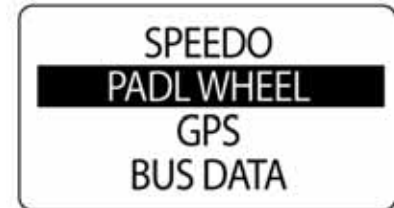
Set the SPEEDO source to GPS when GPS data is used as the speed input source.

Set the SPEEDO source to BUS DATA when an *NMEA 2000* paddle wheel transducer is used as the speed input source.

- 4.) Press and hold the MODE button to enter the selection.



010153

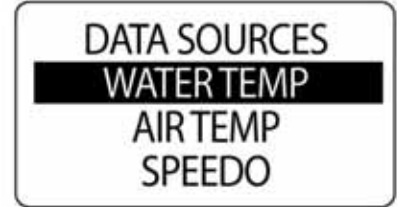


010154

## Select Sea Water Temperature Source

The default Sea WATER TEMPERATURE source is set to ANALOG sender. To change the sea water temperature source enter the DATA SRCS menu, then:

- 1.) Use the UP or DOWN buttons to select WATER TEMP.
- 2.) Press and hold the MODE button to enter the selection.
- 3.) Use the UP or DOWN buttons to select ANALOG or BUS DATA.
- 4.) Press and hold the MODE button to enter the selection.



010155

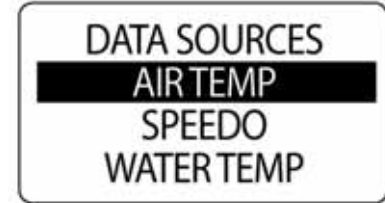


010156

## Select Air Temperature Source

The default AIR TEMPERATURE Source is set to ANALOG sender. To change the air temperature source enter the DATA SRCS menu, then:

- 1.) Use the UP or DOWN buttons to select AIR TEMP.
- 2.) Press and hold the MODE button to enter the selection.
- 3.) Use the UP or DOWN buttons to select ANALOG or BUS DATA.
- 4.) Press and hold the MODE button to enter the selection.



010157



010158



# MAXIMUM SPEED

Use MAXIMUM SPEED to record the maximum speed the speedometer has reached. To view or reset the MAX SPEED enter the EDIT MENU, then:

- 1.) Use the UP or DOWN buttons to select MAX SPEED.
- 2.) Press and hold the MODE button to enter the selection.

To VIEW the MAX SPEED:

- 3.) Use the UP or DOWN buttons to select VIEW.
- 4.) Press and hold the MODE button to view the MAX SPEED.

To RESET the MAX SPEED:

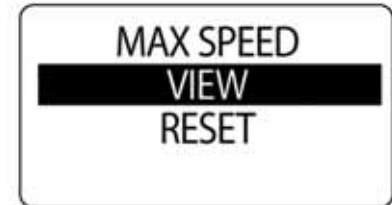
- 5.) Use the UP or DOWN buttons to select RESET.
- 6.) Press and hold the MODE button to RESET the MAX SPEED.

The LCD screen will display: RESET MAX SPEED?

- 7.) Use the UP or DOWN buttons to select YES to RESET, or select NO to EXIT.
- 8.) Press and hold the MODE button to save the selection.



010159



010160



# Troubleshooting

# Troubleshooting Steps

Use a process of elimination to troubleshoot network problems.

1. If the LCD screen of the *ICON* gauge displays a value of zero (0) in any data field, it indicates the gauge is not receiving a signal from one or more devices.

- Make sure the data sources are configured.
- If multiple data fields are displaying “0”, check common items such as cables and t-connectors.
- Remove components from the network **one at a time** to isolate failed components.
- Look for damaged parts.
- Check connectors for corrosion.
- Swap known good components (sensor, cables or t-connectors) to isolate the faulty component.
- Reconnect the good component to the network and the remove the next one in line.
- Continue this process for each device, cable or tee connector on the network until the faulty part is found.

**NOTE:** After a component is reconnected to the network, cycle the key switch OFF and back ON to reset the gauge(s).

# Engine Warnings

*ICON* gauges monitor engine conditions and display warnings in the event of a malfunction. Refer to the out-board **Operator's Guide** if engine warnings are displayed.

ENGINE WARNING	TYPE OF ERROR	POSSIBLE CAUSE	PROCEDURE
Engine TPS Fault	Critical	A throttle position sensor fault has been detected.	Seek assistance to return to a safe harbor immediately and see your dealer.
Engine Oil Pressure Low	Critical	Engine Oil Pressure is LOW	
Engine Temperature High	Critical	Engine Coolant Temperature is HIGH	
Engine Emergency Stop	Critical	Engine Emergency Stop Mode	
Engine Rev Limit Exceeded	Critical	Engine Speed Limit Exceeded	Slow the engine down
Check Engine Service Required	Critical	A "Check Engine" condition is activated when a critical engine condition occurs, or when a service is required.	See your dealer as soon as possible

# Engine Warnings

*ICON* gauges monitor engine conditions and display warnings in the event of a malfunction. Refer to the out-board **Operator's Guide** if engine warnings are displayed.

<b>ENGINE WARNING</b>	<b>TYPE OF ERROR</b>	<b>POSSIBLE CAUSE</b>	<b>PROCEDURE</b>
Water in Fuel	Warning	Water in Fuel	See your dealer
Engine Oil Level LOW	Warning	Engine Oil Level is Below Normal	See your dealer
Engine Boost Pressure HIGH	Warning	Engine Boost Pressure is High	See your dealer
Engine Coolant Temp LOW	Warning	Engine Coolant Temperature is Below Normal	See your dealer
System Charge Indicator	Warning	Engine Charging Potential is Below Normal	See your dealer
Battery Voltage LOW	Warning	Battery Potential is Below Normal	See your dealer
Engine Maintenance Required	Warning	Maintenance is Required	See your dealer

# Engine Warnings

*ICON* gauges monitor engine conditions and display warnings in the event of a malfunction. Refer to the out-board **Operator's Guide** if engine warnings are displayed.

<b>OTHER ENGINE WARNINGS</b>	<b>TYPE OF ERROR</b>	<b>POSSIBLE CAUSE</b>	<b>PROCEDURE</b>
Engine Voltage HIGH	Warning	Battery Potential is Higher than Normal	See your dealer
Engine Fuel Pressure LOW	Warning	Low Fuel Pressure	See your dealer
Warning Level 1	Warning		See your dealer
Warning Level 2	Warning		See your dealer
Water Flow Low	Warning	Water Flow is Below Normal	See your dealer

# Evinrude E-TEC Engine Warnings

*ICON* gauges monitor engine conditions and display warnings in the event of a malfunction. The following table lists warnings that are specific to *Evinrude E-TEC* models. Refer to the outboard **Operator's Guide** if engine warnings are displayed.

WARNING MESSAGE DISPLAYED	POSSIBLE CAUSE	PROCEDURE
RPM RDUCE RESTRT ENG FUEL QLTY? SEE DLR	Water in fuel detected.	See dealer for service.
SENSOR FAULT SERVICE SOON	Water pressure sensor failure.	
CHECK ENGINE WATER IN FUEL	Water-in-fuel detected/sensor has failed.	
CHECK ENGINE WARNING TPS FAULT	Throttle position sensor fault detected.	
CHECK ENGINE SYS VOLT FAULT	Engine 55V circuit out of range.	See dealer for service immediately.
ENGINE OVER TEMP FAULT	Engine or <i>EMM</i> above temperature range. Check cooling water intakes.	
LOW BATTERY FAULT	Battery is discharged.	
NO OIL FAULT	Oil pump/circuit failure.	
RPM RDUCE <i>ICON</i> FAULT 107 SEE DLR	<i>ICON</i> Remote Control communication error.	Refer to <i>ICON</i> Digital Remote Control User's Guide. See Dealer.
RPM RDUCE <i>ICON</i> FAULT 108 SEE DLR	<i>ICON</i> System has initiated S.A.F.E.	
RPM RDUCE <i>ICON</i> FAULT 109 SEE DLR	<i>ICON</i> Remote Control failure.	
RPM RDUCE <i>ICON</i> FAULT 111 SEE DLR	<i>ICON</i> ESM communication error.	
RPM RDUCE <i>ICON</i> FAULT 149 SEE DLR	<i>ICON</i> Throttle Actuator sensor fault.	
RPM RDUCE <i>ICON</i> FAULT 150 SEE DLR	<i>ICON</i> Throttle Actuator motion fault.	
RPM RDUCE <i>ICON</i> FAULT 151 SEE DLR	<i>ICON</i> Shift Actuator Sensor fault.	
RPM RDUCE <i>ICON</i> FAULT 152 SEE DLR	<i>ICON</i> Shift Actuator motion fault.	



# Network Troubleshooting Chart

OBSERVATION	POSSIBLE CAUSE	PROCEDURE
"0" displayed in data fields.	Data sources are not configured.	Use DATA SRCS menu to configure data source.
<i>ICON</i> system does not power on.	Power Supply Harness fuse is blown.	Check Power Supply Harness, fuses and switched B+ from the ignition harness. See <b>Note</b> below.
Power Supply Harness blown fuse.	Network current draw is exceeding 3A.	Check all connections and wiring. Disconnect accessory connections to network. Isolate possible overloads or shorted accessory.
No speed display.	Requires input from <i>NMEA 2000</i> Speed transducer, GPS or paddle wheel.	Check that the device is installed and connected to the network.
Speed Over Water (SOW) does not display.		
Speed Over Ground (SOG) does not display.		
Water depth does not display.		
Sea water temperature does not display.		
Fuel tank level does not display.		
No "FUEL ECON".		

**Note:** The tachometer harness of the *ICON* gauge network must be connected to the *NMEA 2000* network using the device port of a t-connector. Misaligned t-connectors can cause the *NMEA 2000* network power supply fuse to blow and disrupt or eliminate communication in the system.

OBSERVATION	POSSIBLE CAUSE	PROCEDURE
Oil tank level does not display.	Requires input from oil tank sender.	Each oil tank uses an outboard position-specific converter.
Engine water pressure does not display.	Requires input from a water pressure transducer.	If using a block-mounted water pressure transducer, use <i>Evinrude Diagnostics</i> software to set <i>EMM</i> .
Water pressure faults after initial setup.	<p>Water pump is faulty.</p> <p>The block-mounted water pressure sensor is not connected to the engine <i>EMM</i>.</p> <p>The <i>NMEA 2000</i> network water pressure sensor is not configured properly.</p> <p>Engine <i>EMM</i> is not correctly configured for the water pressure sensor.</p>	<p>Verify operation of water pump.</p> <p>Check the connection for the block-mounted water pressure sensor at the engine <i>EMM</i>.</p> <p>Replace the <i>NMEA 2000</i> water pressure with a known good component.</p> <p>Use <i>Evinrude Diagnostics</i> to verify the water pressure sensor setting.</p>
<i>ICON</i> instrument display is erratic.	<p>Power supply battery voltage is less than 12.5V.</p> <p>One or more terminators are missing from the <i>NMEA 2000</i> network.</p>	<p>Check for a minimum 12.5V across the terminals of the power supply battery.</p> <p>Check for installation of two terminators on the <i>NMEA 2000</i> network. Check network buss cable and device connections.</p>
Gauge repeatedly reset to factory defaults.	If this occurs during heavy power use, possible poor battery condition exists.	Check system supply battery voltage with engine running. Check Ignition and Ground connections on pins 4 and 5 of the tachometer.

# Reference

# Data Fields

<b>TACHOMETER</b>					
<b>Abbreviation</b>	<b>Function</b>		<th><b>Abbreviation</b></th> <th><b>Function</b></th>	<b>Abbreviation</b>	<b>Function</b>
RPM	Engine Speed, Revolutions per Minute		TFUEL USED	Total Fuel Used	
OIL PRESS	Oil Pressure		TFUEL LEFT	Total Fuel Remaining	
OIL Temp	Oil Temperature		TFUEL INST	Total Instantaneous Fuel Flow	
COOLANT	Coolant Temperature		TFUEL AVG	Total Average Fuel Flow	
PORT TEMP	Engine Temperature		FUEL ECON	Fuel Economy	
PORT HOURS	Engine Hours		LAT/LONG	Latitude/Longitude	
TRANS GEAR	Gear Position		GPS SPEED	GPS Speed	
TRANS PRESS	Transmission Oil Pressure		COG	Course Over Ground	
THROTTLE	Throttle Percentage		CLOCK	Clock	
ENGINE LOAD	Engine Load		HEADING	Heading	
FUEL TANK #	Fuel Tank 1 – 5		BATTERY #	Battery 1 – 5	
FUEL USED	Fuel Used		TRIM	Trim	
FUEL LEFT	Fuel Remaining		DEPTH	Depth	
FUEL INST	Instantaneous Fuel Flow		WATER PRESS	Water Pressure	
FUEL FLOW	Average Fuel Flow		BALLAST #	Ballast Tank 1 – 5	
OIL LEVEL #	Oil Level 1 – 5		TRIP A FUEL	Trip A Fuel Used	

<b>TACHOMETER</b>			
<b>Abbreviation</b>		<b>Function</b>	
BAITWELL	Bait Well	TRIP A ODO	Trip A Odometer
BLACK WATER	Black Water	TRIP A FAVG	Trip A Average Fuel Flow
GRAY WATER	Gray Water	SEASN HOURS	Season Engine Hours
RUDDER	Rudder Angle	SEASN FUEL	Season Fuel Used
BAROMETER	Barometric Pressure	SEASON ODO	Season Odometer
TRIP A HOURS	Trip A Engine Hours	SEASN FAVG	Season Average Fuel Flow
BATTERY #	Battery Identification	FRESH WATER	Fresh Water Tank
BOOST	Engine Boost	EST RANGE	Estimated Range
ODOMETER	Odometer		
<b>SPEEDOMETER</b>			
<b>Abbreviation</b>		<b>Function</b>	
GPS SPEED	GPS Speed	WATER TEMP	Sea Water Temperature
SPEED	Paddlewheel Speed	LAT/LONG	Latitude/Longitude
AIR TEMP	Air Temperature	HEADING	Heading
COG	Course Over Ground	EST RANGE	Estimated Range
CLOCK	Clock	FUEL ECON	Fuel Economy
BAROMETER	Barometric Pressure	FUEL LEFT	Fuel Remaining
MAX SPEED	Maximum Speed Recorded	TFUEL USED	Total Fuel Used
FUEL TANK #	Fuel Tank 1 – 5	TFUEL LEFT	Total Fuel Remaining
FUEL USED	Fuel Used		

# List of Abbreviations in Tachometer

The *ICON* gauge displays data using the following abbreviations:

Abbreviation	Function
EST	Estimated
EURO	European
GMT	Greenwich Mean Time
GPS	Global Positioning System
INDPNDNT	Independent
INSTRMENT	Instrument
TFUEL USED	Total Fuel Used
TFUEL LEFT	Total Fuel Left
TFUEL INST	Total Instantaneous Fuel Flow
TFUEL AVG	Total Average Fuel Flow
FUEL ECON	Fuel Economy
LAT/LONG	Latitude/Longitude
GPS SPEED	GPS Speed
COG	Course Over Ground
CLOCK	Clock
HEADING	Heading
BATTERY #	Battery 1-5

Abbreviation	Function
TRIM	Trim
DEPTH	Depth
WATER PRESS	Water Pressure
BALLAST #	Ballast Tank1-5
TRIP A	Trip A Fuel Used
TRIP A ODO	Trip A Odometer
TRIP A FAVG	Trip A Average Fuel Flow
SEASN HOURS	Season Engine Hours
seasn fuel	Season fuel used
season odo	season odometer
seasn favg	season average fuel flow
fresh water	fresh water tank
est range	estimated range
intrvl	interval
lvl	level
maint intrvl	maintenance interval
mid port	middle port engine

# List of Abbreviations in Tachometer

The *ICON* gauge displays data using the following abbreviations:

<b>Abbreviation</b>	<b>Function</b>
mid strbd	middle starboard engine
mstr	master
press	pressure
rset	reset
remain src	remaining source
scrns	screens
set	setting
speedo	speedometer
srcs	sources
temp	temperature
warn	warning
w/o	with out
#	number

# List of Supported PGN's

<b>PGN</b>	<b>Data Function</b>
126992	CLOCK and DATE (Optional <i>NMEA 2000</i> GPS)
127245	RUDDER
127488	Engine RPM and TRIM
127489	Engine TEMP, FUEL FLOW, HOURS, WARNINGS, THROTTLE, WATER PRESSURE (with optional water pressure sensor)
127493	GEAR Position, OIL PRESS, OIL TEMP
127505	Fluid Level
127508	Battery Status
128259	SOW and/or SOG (Optional Smart Transducer)
128267	DEPTH (Optional Depth transducer)
129025	Latitude and Longitude (Optional <i>NMEA 2000</i> GPS)
129026	COG and SOG (Optional <i>NMEA 2000</i> GPS)
130310	Atmospheric Pressure
130827	Lighting Control from <i>ICON</i> Digital Remote Control





# **Product Warranty**

# Warranty Statement

## BRP US INC. LIMITED WARRANTY FOR EVINRUDE/JOHNSON GENUINE PARTS AND ACCESSORIES SOLD IN THE UNITED STATES AND CANADA

BRP US Inc.\* (“BRP”) warrants its branded Evinrude®/Johnson® Genuine Parts and Accessories (“Product”) sold by authorized Evinrude or Johnson dealers in the fifty United States and Canada from defects in material or workmanship for the period and under the conditions described below. This limited warranty does not apply to Products not bearing the Evinrude® or Johnson® trademarks that are made by other manufacturers. This limited warranty extends to the original retail purchaser only (“Purchaser”) and is not transferable to any subsequent owner. This warranty is available only on Products purchased as new and unused from a dealer authorized to distribute the Products in the country in which the sale occurred (“Dealer”).

Aluminum propellers, plastic propellers, stainless steel propellers, Snap-In® control cables and Dura-Tank® fuel tanks are warranted for THIRTY-SIX (36) CONSECUTIVE MONTHS from the date of purchase.

ICON® engine control systems and components are warranted for THIRTY-SIX (36) CONSECUTIVE MONTHS from the date of purchase.

Powerhead assemblies are warranted for a period of TWELVE (12) CONSECUTIVE MONTHS from the date of purchase.

All other Products are warranted for a period of TWELVE (12) CONSECUTIVE MONTHS from the date of purchase unless purchased at the time of the engine sale and listed on the Bill of Sale (BOS).

Evinrude or Johnson Genuine Parts accessories sold and rigged by an authorized Evinrude or Johnson dealer in the fifty United States and Canada and listed on the BOS at the time of the engine sale will carry the same THIRTY-SIX (36) CONSECUTIVE MONTH warranty as the BRP US INC. LIMITED WARRANTY FOR *EVINRUDE*® OUTBOARD ENGINES. Consumers must retain their BOS and present it to the servicing authorized Evinrude or Johnson dealer in order for the accessory warranty to be valid.

All products purchased for COMMERCIAL USE, or used commercially at any time during the warranty period, are warranted for TWELVE (12) CONSECUTIVE MONTHS from the date of purchase. Product is used commercially when it is used in connection with any work or employment that generates income, during any part of the warranty period. Product is also used commercially when, at any point during the warranty period, it is installed on a boat that has commercial tags or is licensed for commercial use.

### **Limited Warranty for Allied Lines of Marine Accessories (not branded by Evinrude or Johnson)**

Certain marine accessories in the Evinrude/Johnson Genuine Parts and Accessories Catalog are not sold under the Evinrude or Johnson brand names. These allied lines of marine accessories are located in the rear of the catalog and are identified by manufacturer or brand names (e.g. Teleflex®, Perko®, etc.). Warranty and product support for these marine accessories that are not branded by Evinrude or Johnson will be administered by the respective manufacturer. All inquiries to BRP US Inc. regarding these marine

accessories will be directed to the proper manufacturer. To ensure faster and more direct response to warranty and product issues for these marine accessories please refer to the enclosed list and contact information. DO NOT return defective items or file a warranty claim with BRP US Inc. Warranty Department. Please contact the manufacturer directly. All of the marine accessories sold through this catalog come with a warranty established by the manufacturer. Statements of those warranties can be found on the packaging material packed with the product.

### **Vintage Parts**

Parts identified as Vintage Parts in the catalog and in the BRP US Inc. Master Parts Price Book are not covered by BRP US Inc. Limited Warranty for Evinrude/Johnson Genuine Parts and Accessories. Vintage Parts are sold without warranty, but may be returned in certain circumstances. See the section on returns for conditions on return of Vintage Parts.

The following are not warranted under any circumstances: (a) normal wear and tear; (b) routine maintenance items including, but not limited to, adjustments, oil changes, water pumps, carburetor maintenance, spark plug replacements, etc.; (c) cosmetic damage or paint changes due to exposure to the elements; or (d) damage caused by: improper or lack of installation, maintenance, winterization and/or storage; failure to follow the procedures and recommendations in the Operator's Guide; removal of parts, improper repairs, service, maintenance, or modification; use of parts or accessories not manufactured or approved by BRP that are either incompatible with Product or adversely affect its operation, performance, or durability; repairs done by anyone, including Purchaser, other than an authorized Dealer; abuse, misuse, abnormal use, neglect, racing, improper operation or operation of Product in a manner inconsistent with the Operator's Guide; external damage, accident, submersion, water ingestion, fire, theft, vandalism or act of God; operation with fuels, oils or lubricants not suitable for use with Product (see Operator's Guide); rust or corrosion; or cooling system blockage by foreign material.

This warranty will be voided in its entirety and rendered null and void: (a) where Product has been altered or modified in such a way so as to adversely affect its operation, performance or durability, or has been altered or modified to change its intended use; or (b) where Product is or has been used for racing or any other competitive activity, at any point.

ALL WARRANTIES, EXPRESSED OR IMPLIED, INCLUDING WITHOUT LIMITATION ANY WARRANTY OF MERCHANTABILITY OR FITNESS FOR A PARTICULAR PURPOSE ARE LIMITED IN DURATION TO THE LIFE OF THIS EXPRESS LIMITED WARRANTY. ALL INCIDENTAL, CONSEQUENTIAL, DIRECT, INDIRECT OR OTHER DAMAGES OF ANY KIND ARE EXCLUDED FROM COVERAGE UNDER THIS WARRANTY INCLUDING, BUT NOT LIMITED TO: expense for gasoline, expense for transporting Product to and from Dealer, removal of Product from a boat and reinstallation, mechanic's travel time, in-and-out of water charges, slip or dock fees, trailering or towing, storage, telephone, cell phone, fax or telegram charges, rental of a like or replacement Product or boat during warranty services or down time, taxi, travel, lodging, loss of or damage to personal property, inconvenience, cost of insurance coverage, loan payments, loss of time, income, revenue, profits, enjoyment or use of Product.

SOME JURISDICTIONS DO NOT ALLOW FOR THE DISCLAIMERS, LIMITATIONS OF INCIDENTAL OR CONSEQUENTIAL

DAMAGES OR OTHER EXCLUSIONS IDENTIFIED ABOVE. AS A RESULT, THEY MAY NOT APPLY TO YOU. THIS WARRANTY GIVES YOU SPECIFIC RIGHTS, AND YOU MAY ALSO HAVE OTHER LEGAL RIGHTS THAT MAY VARY FROM JURISDICTION TO JURISDICTION.

Purchaser must bring the Product, including any defective part therein, and proof of purchase of the Product (original bill of sale) to Dealer promptly after the appearance of the defect and, in any event, within the warranty period. Purchaser must sign the repair/work order prior to repair to validate warranty coverage and must provide BRP/Dealer with a reasonable opportunity to repair/replace the defective part. All replaced parts become the property of BRP.

BRP's obligations under this warranty are limited to, at its sole discretion, repairing or replacing parts of Product found to be defective in material or workmanship, in BRP's reasonable judgment. Repair or replacement of parts will be without charge for parts and labor, at any authorized Dealer. No claim of breach of warranty shall be cause for cancellation or rescission of the sale of Product to Purchaser. BRP reserves the right to improve, modify or change Products without assuming any obligation to modify Products previously manufactured. If warranty service is required outside of the fifty United States or Canada, Purchaser will bear responsibility for any additional charges due to local practices and conditions including, but not limited to, freight, insurance, taxes, license fees, import duties, and any financial charges levied by governments, states, territories and agencies.

No distributor, Dealer or any other person is authorized to make any affirmation, representation or warranty regarding Product other than those contained in this limited warranty and, if made, shall not be enforceable against BRP. BRP reserves the right to modify this warranty at any time, being understood that such modification will not alter the warranty conditions applicable to the Products sold while this warranty is in effect.

The Limited Warranty applies only to Products purchased as new and unused from a distributor or dealer authorized to distribute products in the country in which the sale occurred. If warranty service is required outside of the country of original sale, Purchaser bears responsibility for any and all charges due to local practices and conditions that exceed or are in addition to customary charges in the country of sale, such as, but not limited to, freight, insurance, taxes, license fees, import duties, and any financial charges levied by governments, states, territories and agencies.

For assistance, please contact BRP US Inc. Consumer Support, P.O. Box 597, 10101 Science Drive, Sturtevant, WI 53177, 1-847-689-7090 or the affiliate of BRP Inc. where the Product was sold to the retail Purchaser or visit [www.brp.com](http://www.brp.com).

No other change to the Limited Warranty shall be made or implied. Effective as of July 1, 2011.

\* In Canada, products are distributed and serviced by Bombardier Recreational Products Inc.

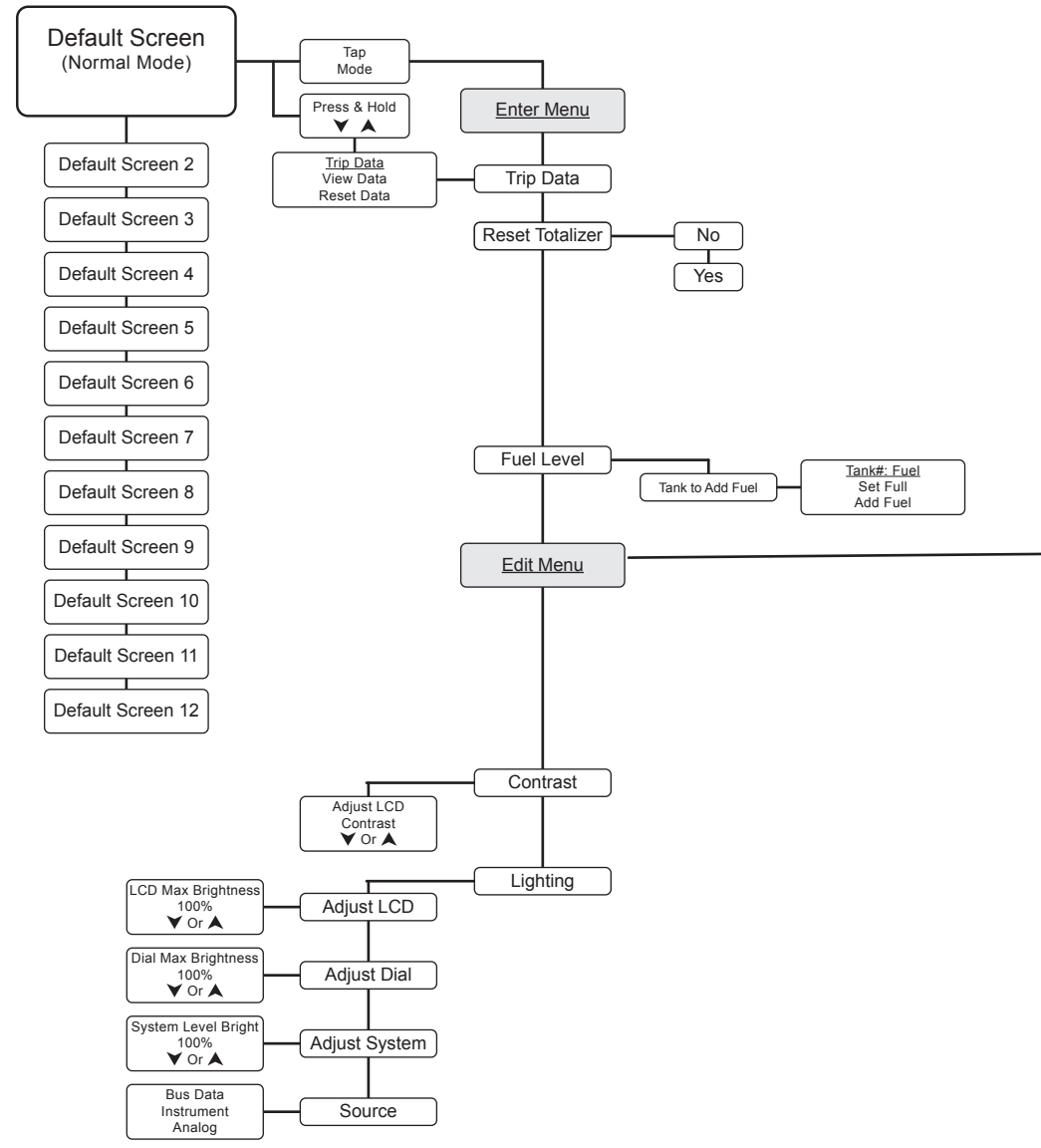
® Registered trademark of Bombardier Recreational Products Inc. or its affiliates.

© 2011 BRP US Inc. All rights reserved.

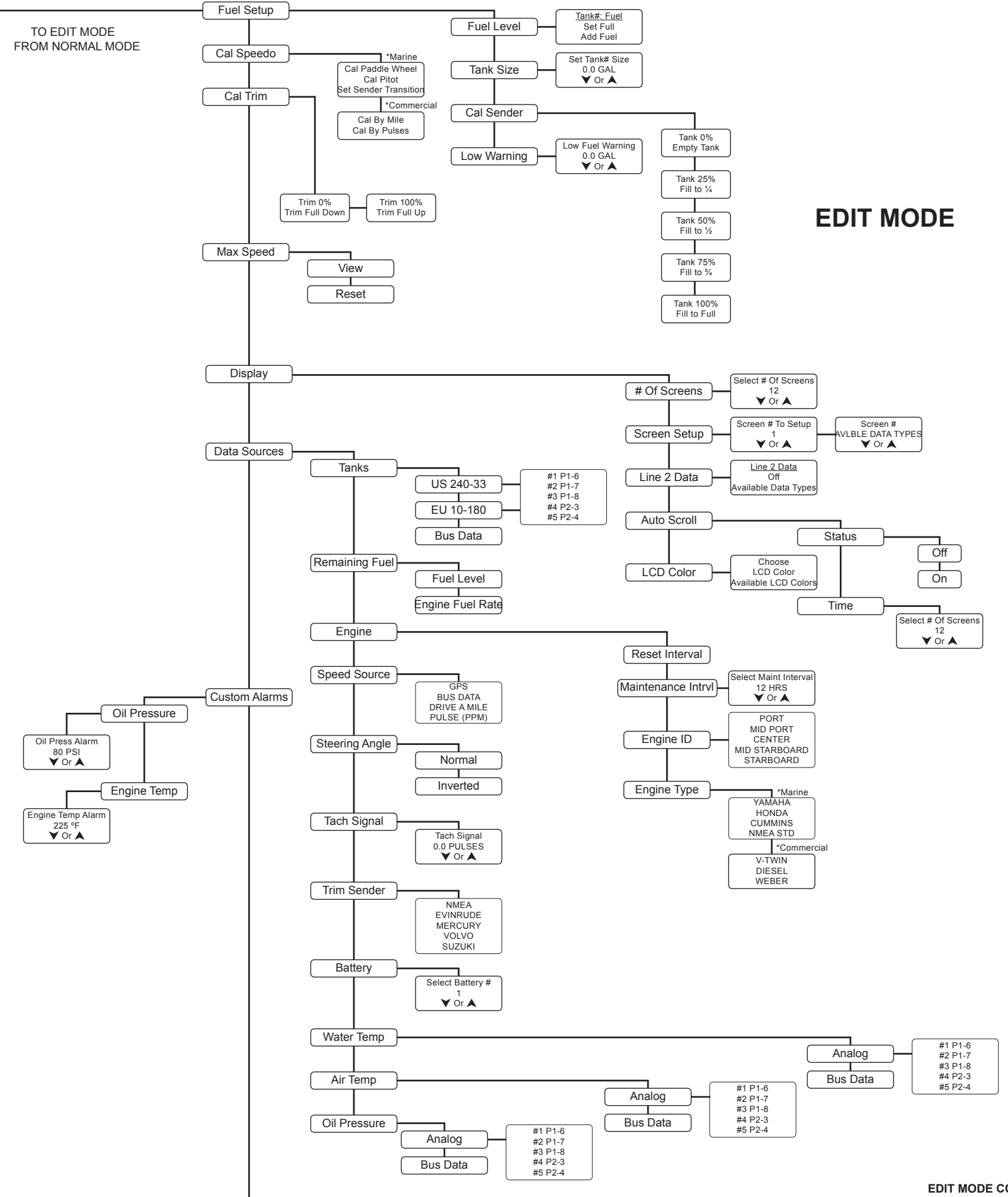
Limited Warranty Revision June 2011



# Program Map



## NORMAL MODE



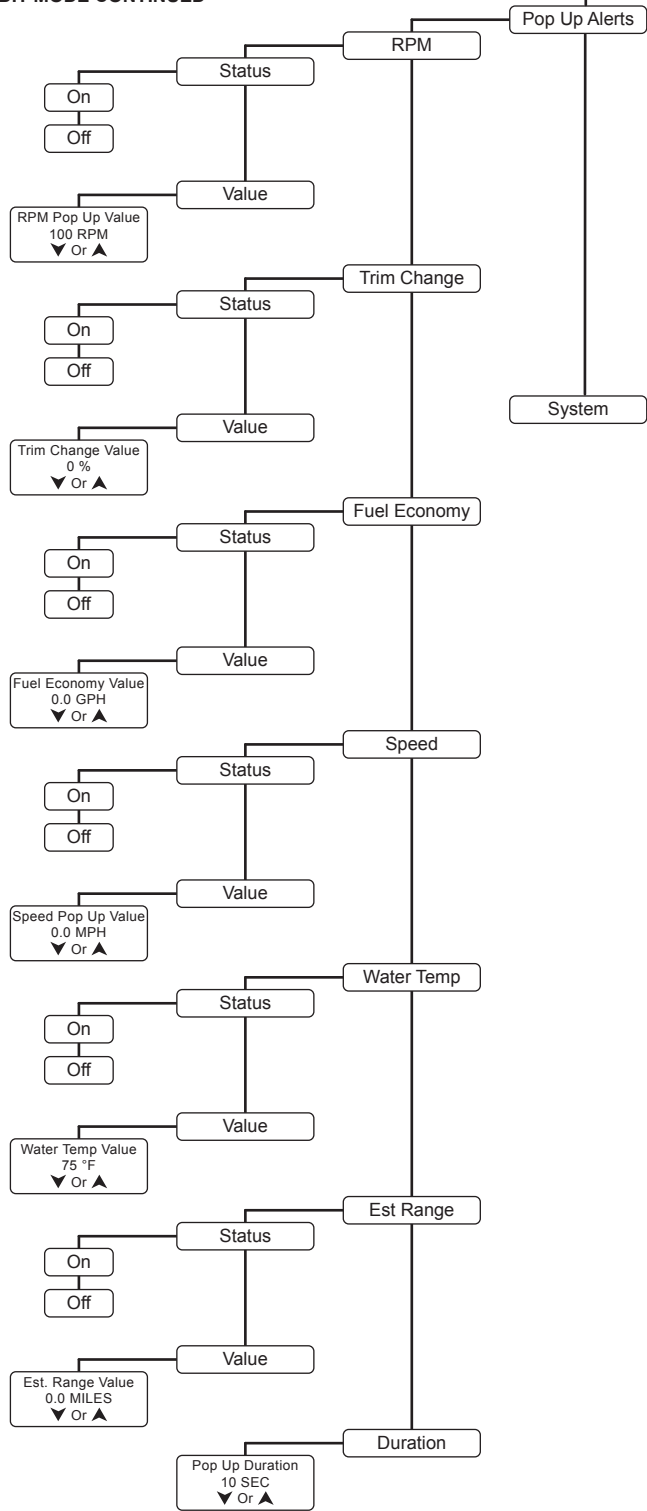
## EDIT MODE

EDIT MODE CONTINUED





**EDIT MODE CONTINUED**



**EDIT MODE**

