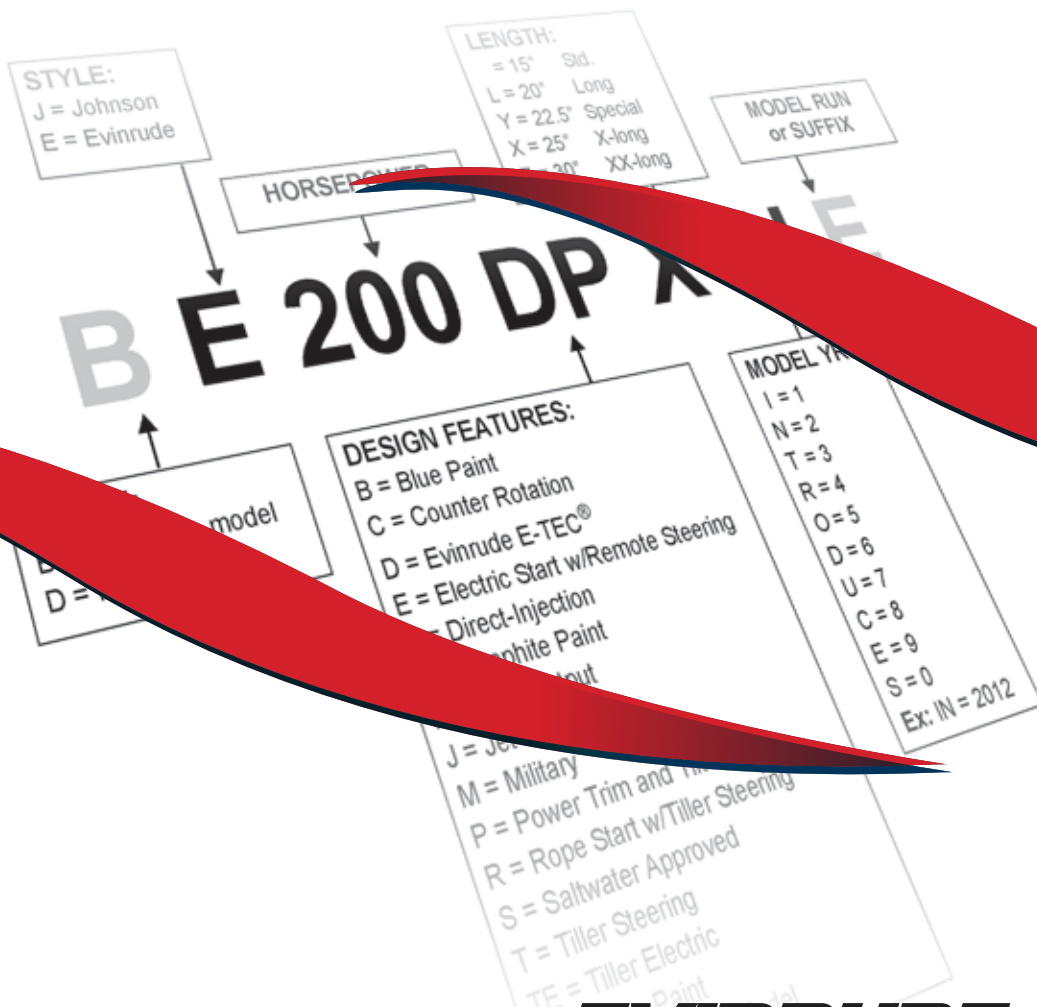




MODEL NUMBER REFERENCE

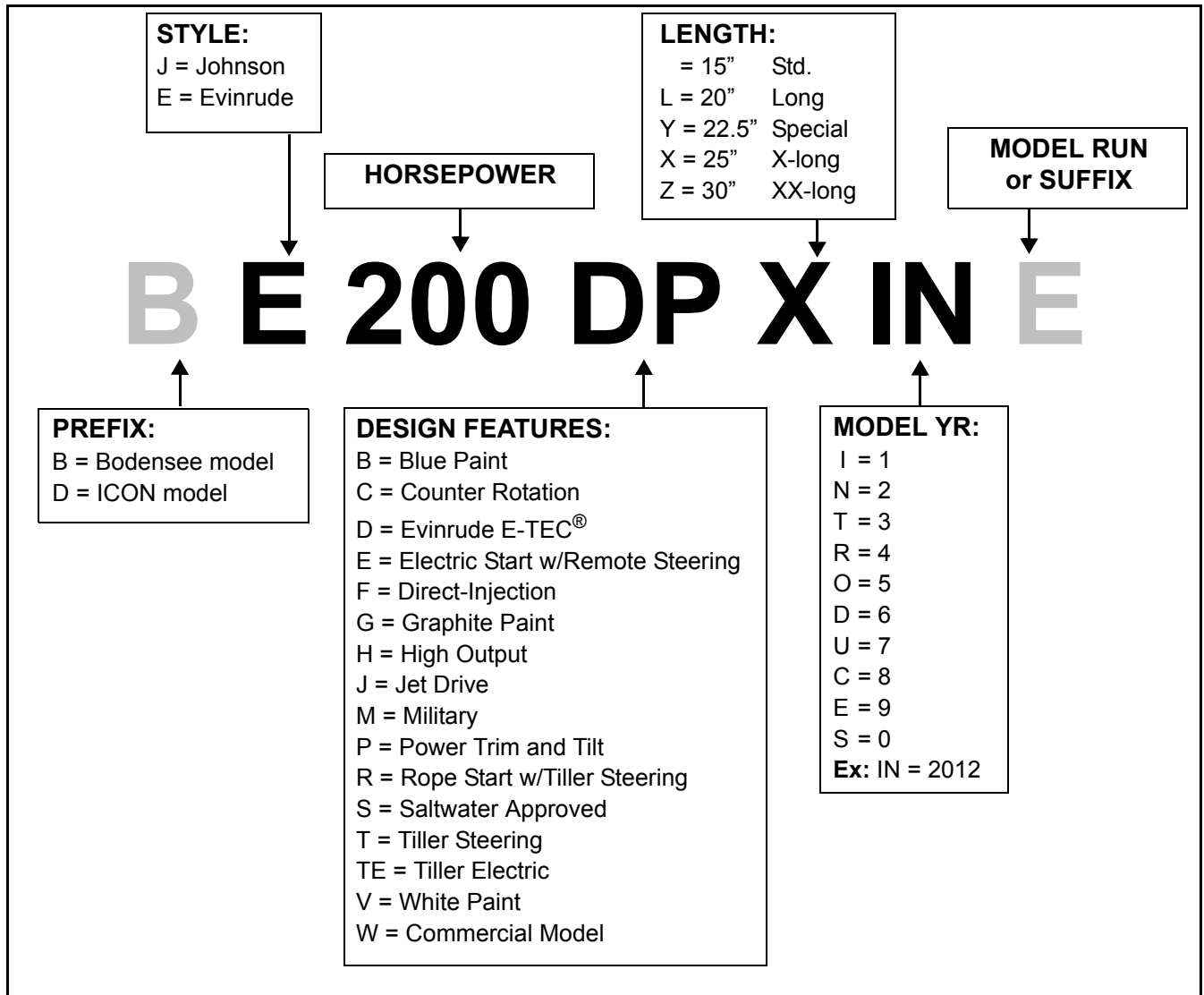
2005 TO PRESENT



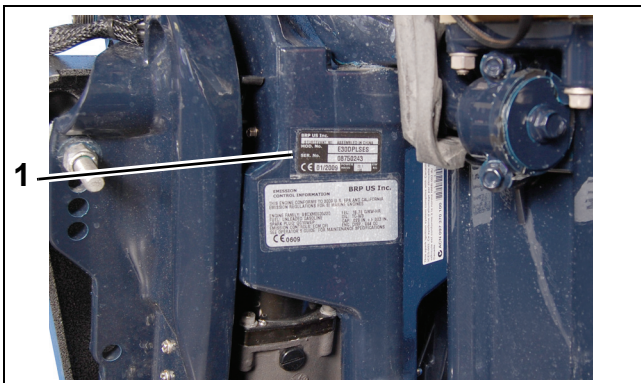
EVINRUDE®
Johnson®



MODEL DESIGNATION

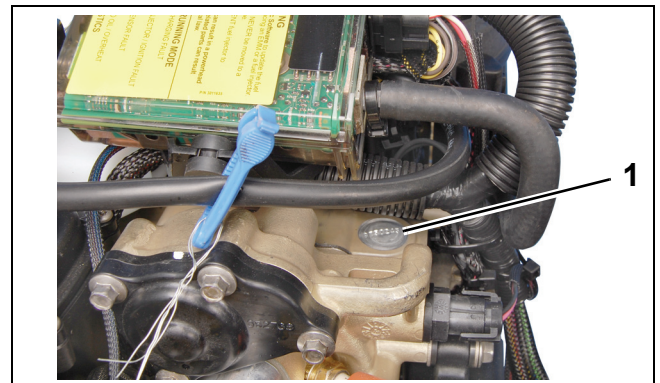


Model and serial numbers are located on the swivel bracket and on the powerhead.



1. Model and serial number

007445



1. Serial number

007446

MODEL DESIGNATION

Evinrude and Johnson Outboards 2005 - 2012

Horsepower	Model Number	Model Year	Engine	Shaft Length	Color	Steering	Starting	Midsection
2.5	J2R4SUC	2007	1 Cyl. / 4.15 cu in	15"	White	Tiller	Rope	Manual Tilt
2.5	J2R4SDS	2006	1 Cyl. / 4.15 cu in	15"	White	Tiller	Rope	Manual Tilt
3.5	J3RSDE	2006	1 Cyl. / 4.8 cu in	15"	White	Tiller	Rope	Manual Tilt
3.5	J3RSOD	2005	1 Cyl. / 4.8 cu in	15"	White	Tiller	Rope	Manual Tilt
4	J4R4SUM	2007	1 Cyl. / 8.4 cu in	15"	White	Tiller	Rope	Manual Tilt
4	J4RL4SUM	2007	1 Cyl. / 8.4 cu in	20"	White	Tiller	Rope	Manual Tilt
4	J4R4SDA	2006	1 Cyl. / 8.4 cu in	15"	White	Tiller	Rope	Manual Tilt
4	J4RL4SDA	2006	1 Cyl. / 8.4 cu in	20"	White	Tiller	Rope	Manual Tilt
4	J4R4SOR	2005	1 Cyl. / 8.4 cu in	15"	White	Tiller	Rope	Manual Tilt
4	J4RL4SOR	2005	1 Cyl. / 8.4 cu in	20"	White	Tiller	Rope	Manual Tilt
5	J5R4SUM	2007	1 Cyl. / 8.4 cu in	15"	White	Tiller	Rope	Manual Tilt
5	J5RL4SUM	2007	1 Cyl. / 8.4 cu in	20"	White	Tiller	Rope	Manual Tilt
5	J5R4SDA	2006	1 Cyl. / 8.4 cu in	15"	White	Tiller	Rope	Manual Tilt
5	J5RL4SDA	2006	1 Cyl. / 8.4 cu in	20"	White	Tiller	Rope	Manual Tilt
5	J5R4SOR	2005	1 Cyl. / 8.4 cu in	15"	White	Tiller	Rope	Manual Tilt
5	J5RL4SOR	2005	1 Cyl. / 8.4 cu in	20"	White	Tiller	Rope	Manual Tilt
6	J6R4SUR	2007	1 Cyl. / 8.4 cu in	15"	White	Tiller	Rope	Manual Tilt
6	J6RL4SUR	2007	1 Cyl. / 8.4 cu in	20"	White	Tiller	Rope	Manual Tilt
6	J6R4SDC	2006	1 Cyl. / 8.4 cu in	15"	White	Tiller	Rope	Manual Tilt
6	J6RL4SDC	2006	1 Cyl. / 8.4 cu in	20"	White	Tiller	Rope	Manual Tilt
6	J6R4SOS	2005	1 Cyl. / 8.4 cu in	15"	White	Tiller	Rope	Manual Tilt
6	J6RL4SOS	2005	1 Cyl. / 8.4 cu in	20"	White	Tiller	Rope	Manual Tilt
6	J6R4SOXR	2005	1 Cyl. / 8.4 cu in	15"	White	Tiller	Rope	Manual Tilt
6	J6RL4SOXR	2005	1 Cyl. / 8.4 cu in	20"	White	Tiller	Rope	Manual Tilt
6	J6RSOC	2005	2 Cyl. / 10.0 cu in	15"	White	Tiller	Rope	Manual Tilt
6	J6RLSOC	2005	2 Cyl. / 10.0 cu in	20"	White	Tiller	Rope	Manual Tilt
8	J8RSOR	2005	2 Cyl. / 10.0 cu in	15"	White	Tiller	Rope	Manual Tilt
8	J8RLSOR	2005	2 Cyl. / 10.0 cu in	20"	White	Tiller	Rope	Manual Tilt
8	J8R4SOR	2005	2 Cyl. / 12.8 cu in	15"	White	Tiller	Rope	Manual Tilt
8	J8RL4SOR	2005	2 Cyl. / 12.8 cu in	20"	White	Tiller	Rope	Manual Tilt
9.9	J10RSUR	2007	2 Cyl. / 15.6 cu in	15"	White	Tiller	Rope	Manual Tilt
9.9	J10RLSUR	2007	2 Cyl. / 15.6 cu in	20"	White	Tiller	Rope	Manual Tilt
9.9	J10R4SUB	2007	2 Cyl. / 18.4 cu in	15"	White	Tiller	Rope	Manual Tilt
9.9	J10RL4SUB	2007	2 Cyl. / 18.4 cu in	20"	White	Tiller	Rope	Manual Tilt
9.9	J10TE4SUB	2007	2 Cyl. / 18.4 cu in	15"	White	Tiller	Electric	Manual Tilt
9.9	J10TEL4SUB	2007	2 Cyl. / 18.4 cu in	20"	White	Tiller	Electric	Manual Tilt
9.9	J10TBL4SUD	2007	2 Cyl. / 18.4 cu in	20"	Blue	Tiller	Electric	Manual Tilt
9.9	J10EL4SUM	2007	2 Cyl. / 18.4 cu in	20"	White	Remote	Electric	Manual Tilt
9.9	J10BL4SUM	2007	2 Cyl. / 18.4 cu in	20"	Blue	Remote	Electric	Manual Tilt
9.9	J10R4SUB	2007	2 Cyl. / 18.4 cu in	15"	White	Tiller	Rope	Manual Tilt
9.9	J10RL4SUB	2007	2 Cyl. / 18.4 cu in	20"	White	Tiller	Rope	Manual Tilt
9.9	J10TE4SUB	2007	2 Cyl. / 18.4 cu in	15"	White	Tiller	Electric	Manual Tilt
9.9	J10TEL4SUB	2007	2 Cyl. / 18.4 cu in	20"	White	Tiller	Electric	Manual Tilt
9.9	J10TBL4SUD	2007	2 Cyl. / 18.4 cu in	20"	Blue	Tiller	Electric	Manual Tilt
9.9	J10EL4SUM	2007	2 Cyl. / 18.4 cu in	20"	White	Remote	Electric	Manual Tilt
9.9	J10BL4SUM	2007	2 Cyl. / 18.4 cu in	20"	Blue	Remote	Electric	Manual Tilt
9.9	J10RSDC	2006	2 Cyl. / 15.6 cu in	15"	White	Tiller	Rope	Manual Tilt
9.9	J10RLSDC	2006	2 Cyl. / 15.6 cu in	20"	White	Tiller	Rope	Manual Tilt
9.9	BJ10RHSDA	2006	2 Cyl. / 15.6 cu in	15"	White	Tiller	Rope	Manual Tilt
9.9	BJ10RHLSDA	2006	2 Cyl. / 15.6 cu in	20"	White	Tiller	Rope	Manual Tilt
9.9	J10R4SDM	2006	2 Cyl. / 18.4 cu in	15"	White	Tiller	Rope	Manual Tilt
9.9	J10RL4SDM	2006	2 Cyl. / 18.4 cu in	20"	White	Tiller	Rope	Manual Tilt
9.9	J10TE4SDM	2006	2 Cyl. / 18.4 cu in	15"	White	Tiller	Electric	Manual Tilt
9.9	J10TEL4SDM	2006	2 Cyl. / 18.4 cu in	20"	White	Tiller	Electric	Manual Tilt
9.9	J10TBL4SDE	2006	2 Cyl. / 18.4 cu in	20"	Blue	Tiller	Electric	Manual Tilt
9.9	J10EL4SDA	2006	2 Cyl. / 18.4 cu in	20"	White	Remote	Electric	Manual Tilt
9.9	J10RSOS	2005	2 Cyl. / 15.6 cu in	15"	White	Tiller	Rope	Manual Tilt
9.9	J10RLSOS	2005	2 Cyl. / 15.6 cu in	20"	White	Tiller	Rope	Manual Tilt
9.9	BJ10RHLSOR	2005	2 Cyl. / 15.6 cu in	15"	White	Tiller	Rope	Manual Tilt
9.9	BJ10RHLSOR	2005	2 Cyl. / 15.6 cu in	20"	White	Tiller	Rope	Manual Tilt
9.9	J10R4SOA	2005	2 Cyl. / 18.4 cu in	15"	White	Tiller	Rope	Manual Tilt
9.9	J10RL4SOA	2005	2 Cyl. / 18.4 cu in	20"	White	Tiller	Rope	Manual Tilt
9.9	J10TE4SOA	2005	2 Cyl. / 18.4 cu in	15"	White	Tiller	Electric	Manual Tilt
9.9	J10TEL4SOA	2005	2 Cyl. / 18.4 cu in	20"	White	Tiller	Electric	Manual Tilt
9.9	J10TBL4SOB	2005	2 Cyl. / 18.4 cu in	20"	Blue	Tiller	Electric	Manual Tilt
9.9	J10EL4SOR	2005	2 Cyl. / 18.4 cu in	20"	White	Remote	Electric	Manual Tilt
15	E15DHTLINR	2012	2 Cyl. / 35.2 cu in	20"	Blue	Tiller	Rope/Electric	Power Tilt
15	E15DHPLINR	2012	2 Cyl. / 35.2 cu in	20"	Blue	Remote	Rope/Electric	Power Tilt
15	E15HTSLINC	2012	2 Cyl. / 35.2 cu in	20"	White	Tiller	Rope/Electric	Power Tilt
15	E15HTSXINC	2012	2 Cyl. / 35.2 cu in	25"	White	Tiller	Rope/Electric	Power Tilt

Evinrude and Johnson Outboards 2005 - 2012

Horsepower	Model Number	Model Year	Engine	Shaft Length	Color	Steering	Starting	Midsection
15	E15HPSLINC	2012	2 Cyl. / 35.2 cu in	20"	White	Remote	Rope/Electric	Power Tilt
15	E15HPSXINC	2012	2 Cyl. / 35.2 cu in	25"	White	Remote	Rope/Electric	Power Tilt
15	E15DHTLIIC	2011	2 Cyl. / 35.2 cu in	20"	Blue	Tiller	Rope/Electric	Power Tilt
15	E15DHPLIIC	2011	2 Cyl. / 35.2 cu in	20"	Blue	Remote	Rope/Electric	Power Tilt
15	E15HTSLIIS	2011	2 Cyl. / 35.2 cu in	20"	White	Tiller	Rope/Electric	Power Tilt
15	E15HTSXIIIS	2011	2 Cyl. / 35.2 cu in	25"	White	Tiller	Rope/Electric	Power Tilt
15	E15HPSLIIS	2011	2 Cyl. / 35.2 cu in	20"	White	Remote	Rope/Electric	Power Tilt
15	E15HPSXIIIS	2011	2 Cyl. / 35.2 cu in	25"	White	Remote	Rope/Electric	Power Tilt
15	E15DHTLISS	2010	2 Cyl. / 35.2 cu in	20"	Blue	Tiller	Rope/Electric	Power Tilt
15	E15DHPLISS	2010	2 Cyl. / 35.2 cu in	20"	Blue	Remote	Rope/Electric	Power Tilt
15	J15R4SUB	2007	2 Cyl. / 18.4 cu in	15"	White	Tiller	Rope	Manual Tilt
15	J15RL4SUB	2007	2 Cyl. / 18.4 cu in	20"	White	Tiller	Rope	Manual Tilt
15	J15TE4SUB	2007	2 Cyl. / 18.4 cu in	15"	White	Tiller	Electric	Manual Tilt
15	J15TEL4SUB	2007	2 Cyl. / 18.4 cu in	20"	White	Tiller	Electric	Manual Tilt
15	J15EL4SUR	2007	2 Cyl. / 18.4 cu in	20"	White	Remote	Electric	Manual Tilt
15	J15RSUA	2007	2 Cyl. / 15.6 cu in	15"	White	Tiller	Rope	Manual Tilt
15	J15RLSUA	2007	2 Cyl. / 15.6 cu in	20"	White	Tiller	Rope	Manual Tilt
15	J15RTSUR	2007	2 Cyl. / 15.6 cu in	15"	White	Tiller	Rope	Manual Tilt
15	J15RSDR	2006	2 Cyl. / 15.6 cu in	15"	White	Tiller	Rope	Manual Tilt
15	J15RLSDR	2006	2 Cyl. / 15.6 cu in	20"	White	Tiller	Rope	Manual Tilt
15	J15RTSDC	2006	2 Cyl. / 15.6 cu in	15"	White	Tiller	Rope	Manual Tilt
15	J15R4SDM	2006	2 Cyl. / 18.4 cu in	15"	White	Tiller	Rope	Manual Tilt
15	J15RL4SDM	2006	2 Cyl. / 18.4 cu in	20"	White	Tiller	Rope	Manual Tilt
15	J15TE4SDM	2006	2 Cyl. / 18.4 cu in	15"	White	Tiller	Electric	Manual Tilt
15	J15TEL4SDM	2006	2 Cyl. / 18.4 cu in	20"	White	Tiller	Electric	Manual Tilt
15	J15EL4SDC	2006	2 Cyl. / 18.4 cu in	20"	White	Remote	Electric	Manual Tilt
15	J15RSOC	2005	2 Cyl. / 15.6 cu in	15"	White	Tiller	Rope	Manual Tilt
15	J15RLSOC	2005	2 Cyl. / 15.6 cu in	20"	White	Tiller	Rope	Manual Tilt
15	J15WRSOB	2005	2 Cyl. / 15.6 cu in	15"	Smoke	Tiller	Rope	Manual Tilt
15	J15WRLSOB	2005	2 Cyl. / 15.6 cu in	20"	Smoke	Tiller	Rope	Manual Tilt
15	J15RTSOS	2005	2 Cyl. / 15.6 cu in	15"	White	Tiller	Rope	Manual Tilt
15	J15R4SOA	2005	2 Cyl. / 18.4 cu in	15"	White	Tiller	Rope	Manual Tilt
15	J15RL4SOA	2005	2 Cyl. / 18.4 cu in	20"	White	Tiller	Rope	Manual Tilt
15	J15TE4SOA	2005	2 Cyl. / 18.4 cu in	15"	White	Tiller	Electric	Manual Tilt
15	J15TEL4SOA	2005	2 Cyl. / 18.4 cu in	20"	White	Tiller	Electric	Manual Tilt
15	J15EL4SOS	2005	2 Cyl. / 18.4 cu in	20"	White	Remote	Electric	Manual Tilt
25	E25DRINA	2012	2 Cyl. / 35.2 cu in	15"	Blue	Tiller	Rope	Manual Tilt
25	E25DRSINC	2012	2 Cyl. / 35.2 cu in	15"	White	Tiller	Rope	Manual Tilt
25	E25DRLINA	2012	2 Cyl. / 35.2 cu in	20"	Blue	Tiller	Rope	Manual Tilt
25	E25DRSLINC	2012	2 Cyl. / 35.2 cu in	20"	White	Tiller	Rope	Manual Tilt
25	E25DTEINA	2012	2 Cyl. / 35.2 cu in	15"	Blue	Tiller	Rope/Electric	Manual Tilt
25	E25DTELINA	2012	2 Cyl. / 35.2 cu in	20"	Blue	Tiller	Rope/Electric	Manual Tilt
25	E25TESLINC	2012	2 Cyl. / 35.2 cu in	20"	White	Tiller	Rope/Electric	Manual Tilt
25	E25DELINA	2012	2 Cyl. / 35.2 cu in	20"	Blue	Remote	Rope/Electric	Manual Tilt
25	E25DPLINA	2012	2 Cyl. / 35.2 cu in	20"	Blue	Remote	Rope/Electric	Power Tilt
25	E25DPSLINC	2012	2 Cyl. / 35.2 cu in	20"	White	Remote	Rope/Electric	Power Tilt
25	E25DTLINA	2012	2 Cyl. / 35.2 cu in	20"	Blue	Tiller	Rope/Electric	Power Tilt
25	E25DTSLINC	2012	2 Cyl. / 35.2 cu in	20"	White	Tiller	Rope/Electric	Power Tilt
25	E25DRIIR	2011	2 Cyl. / 35.2 cu in	15"	Blue	Tiller	Rope	Manual Tilt
25	E25DRIIH	2011	2 Cyl. / 35.2 cu in	15"	Blue	Tiller	Rope	Manual Tilt
25	E25DRSIIS	2011	2 Cyl. / 35.2 cu in	15"	White	Tiller	Rope	Manual Tilt
25	E25DRSIIH	2011	2 Cyl. / 35.2 cu in	15"	White	Tiller	Rope	Manual Tilt
25	E25DRLIIR	2011	2 Cyl. / 35.2 cu in	20"	Blue	Tiller	Rope	Manual Tilt
25	E25DRLIIH	2011	2 Cyl. / 35.2 cu in	20"	Blue	Tiller	Rope	Manual Tilt
25	E25DRSLIIS	2011	2 Cyl. / 35.2 cu in	20"	White	Tiller	Rope	Manual Tilt
25	E25DRSLIIH	2011	2 Cyl. / 35.2 cu in	20"	White	Tiller	Rope	Manual Tilt
25	E25DTEIIR	2011	2 Cyl. / 35.2 cu in	15"	Blue	Tiller	Rope/Electric	Manual Tilt
25	E25DTEIIG	2011	2 Cyl. / 35.2 cu in	15"	Blue	Tiller	Rope/Electric	Manual Tilt
25	E25DTEIIH	2011	2 Cyl. / 35.2 cu in	15"	Blue	Tiller	Rope/Electric	Manual Tilt
25	E25DTELIIR	2011	2 Cyl. / 35.2 cu in	20"	Blue	Tiller	Rope/Electric	Manual Tilt
25	E25DTELIH	2011	2 Cyl. / 35.2 cu in	20"	Blue	Tiller	Rope/Electric	Manual Tilt
25	E25TESLIIS	2011	2 Cyl. / 35.2 cu in	20"	White	Tiller	Rope/Electric	Manual Tilt
25	E25TESLIH	2011	2 Cyl. / 35.2 cu in	20"	White	Tiller	Rope/Electric	Manual Tilt
25	E25DELIIR	2011	2 Cyl. / 35.2 cu in	20"	Blue	Remote	Rope/Electric	Manual Tilt
25	E25DELIH	2011	2 Cyl. / 35.2 cu in	20"	Blue	Remote	Rope/Electric	Manual Tilt
25	E25DPLIIR	2011	2 Cyl. / 35.2 cu in	20"	Blue	Remote	Rope/Electric	Power Tilt
25	E25DPLIIG	2011	2 Cyl. / 35.2 cu in	20"	Blue	Remote	Rope/Electric	Power Tilt
25	E25DPLIIH	2011	2 Cyl. / 35.2 cu in	20"	Blue	Remote	Rope/Electric	Power Tilt
25	E25DPSLIIS	2011	2 Cyl. / 35.2 cu in	20"	White	Remote	Rope/Electric	Power Tilt
25	E25DPSLIH	2011	2 Cyl. / 35.2 cu in	20"	White	Remote	Rope/Electric	Power Tilt

Evinrude and Johnson Outboards 2005 - 2012

Horsepower	Model Number	Model Year	Engine	Shaft Length	Color	Steering	Starting	Midsection
25	E25DTLIIR	2011	2 Cyl. / 35.2 cu in	20"	Blue	Tiller	Rope/Electric	Power Tilt
25	E25DTLIH	2011	2 Cyl. / 35.2 cu in	20"	Blue	Tiller	Rope/Electric	Power Tilt
25	E25DTSLIIS	2011	2 Cyl. / 35.2 cu in	20"	White	Tiller	Rope/Electric	Power Tilt
25	E25DTSLIH	2011	2 Cyl. / 35.2 cu in	20"	White	Tiller	Rope/Electric	Power Tilt
25	E25DRISC	2010	2 Cyl. / 35.2 cu in	15"	Blue	Tiller	Rope	Manual Tilt
25	E25DRLISC	2010	2 Cyl. / 35.2 cu in	20"	Blue	Tiller	Rope	Manual Tilt
25	E25DTEISC	2010	2 Cyl. / 35.2 cu in	15"	Blue	Tiller	Rope/Electric	Manual Tilt
25	E25DTELISC	2010	2 Cyl. / 35.2 cu in	20"	Blue	Tiller	Rope/Electric	Manual Tilt
25	E25DELISC	2010	2 Cyl. / 35.2 cu in	20"	Blue	Remote	Rope/Electric	Manual Tilt
25	E25DPLISC	2010	2 Cyl. / 35.2 cu in	20"	Blue	Remote	Rope/Electric	Power Tilt
25	E25DTLISC	2010	2 Cyl. / 35.2 cu in	20"	Blue	Tiller	Rope/Electric	Power Tilt
25	E25DRSES	2009	2 Cyl. / 35.2 cu in	15"	Blue	Tiller	Rope	Manual Tilt
25	E25DRLSES	2009	2 Cyl. / 35.2 cu in	20"	Blue	Tiller	Rope	Manual Tilt
25	E25DTESES	2009	2 Cyl. / 35.2 cu in	15"	Blue	Tiller	Rope/Electric	Manual Tilt
25	E25DELSES	2009	2 Cyl. / 35.2 cu in	20"	Blue	Tiller	Rope/Electric	Manual Tilt
25	E25DLSSES	2009	2 Cyl. / 35.2 cu in	20"	Blue	Remote	Rope/Electric	Manual Tilt
25	E25DTLSES	2009	2 Cyl. / 35.2 cu in	20"	Blue	Remote	Rope/Electric	Power Tilt
25	E25DPLSES	2009	2 Cyl. / 35.2 cu in	20"	Blue	Tiller	Rope/Electric	Power Tilt
25	J25R4SUR	2007	2 Cyl. / 32.8 cu in	15"	White	Tiller	Rope	Manual Tilt
25	BJ25R4SUC	2007	2 Cyl. / 32.8 cu in	15"	White	Tiller	Rope	Manual Tilt
25	J25RL4SUR	2007	2 Cyl. / 32.8 cu in	20"	White	Tiller	Rope	Manual Tilt
25	BJ25RL4SUC	2007	2 Cyl. / 32.8 cu in	20"	White	Tiller	Rope	Manual Tilt
25	J25TE4SUR	2007	2 Cyl. / 32.8 cu in	15"	White	Tiller	Electric	Manual Tilt
25	BJ25TE4SUC	2007	2 Cyl. / 32.8 cu in	15"	White	Tiller	Electric	Manual Tilt
25	J25TEL4SUR	2007	2 Cyl. / 32.8 cu in	20"	White	Tiller	Electric	Manual Tilt
25	BJ25TL4SUC	2007	2 Cyl. / 32.8 cu in	20"	White	Tiller	Electric	Manual Tilt
25	J25E4SUR	2007	2 Cyl. / 32.8 cu in	15"	White	Remote	Electric	Manual Tilt
25	BJ25E4SUC	2007	2 Cyl. / 32.8 cu in	15"	White	Remote	Electric	Manual Tilt
25	J25EL4SUR	2007	2 Cyl. / 32.8 cu in	20"	White	Remote	Electric	Manual Tilt
25	BJ25EL4SUC	2007	2 Cyl. / 32.8 cu in	20"	White	Remote	Electric	Manual Tilt
25	J25R4SDC	2006	2 Cyl. / 32.8 cu in	15"	White	Tiller	Rope	Manual Tilt
25	BJ25R4SDS	2006	2 Cyl. / 32.8 cu in	15"	White	Tiller	Rope	Manual Tilt
25	J25RL4SDC	2006	2 Cyl. / 32.8 cu in	20"	White	Tiller	Rope	Manual Tilt
25	BJ25RL4SDS	2006	2 Cyl. / 32.8 cu in	20"	White	Tiller	Rope	Manual Tilt
25	J25TE4SDC	2006	2 Cyl. / 32.8 cu in	15"	White	Tiller	Electric	Manual Tilt
25	BJ25TE4SDS	2006	2 Cyl. / 32.8 cu in	15"	White	Tiller	Electric	Manual Tilt
25	J25TEL4SDC	2006	2 Cyl. / 32.8 cu in	20"	White	Tiller	Electric	Manual Tilt
25	BJ25TL4SDS	2006	2 Cyl. / 32.8 cu in	20"	White	Tiller	Electric	Manual Tilt
25	J25E4SDC	2006	2 Cyl. / 32.8 cu in	15"	White	Remote	Electric	Manual Tilt
25	BJ25E4SDS	2006	2 Cyl. / 32.8 cu in	15"	White	Remote	Electric	Manual Tilt
25	J25EL4SDC	2006	2 Cyl. / 32.8 cu in	20"	White	Remote	Electric	Manual Tilt
25	BJ25EL4SDS	2006	2 Cyl. / 32.8 cu in	20"	White	Remote	Electric	Manual Tilt
25	J25R5SOA	2005	2 Cyl. / 31.8 cu in	15"	White	Tiller	Rope	Manual Tilt
25	J25RL5SOA	2005	2 Cyl. / 31.8 cu in	20"	White	Tiller	Rope	Manual Tilt
25	J25WRSOB	2005	2 Cyl. / 31.8 cu in	15"	Smoke	Tiller	Rope	Manual Tilt
25	J25WR5SOB	2005	2 Cyl. / 31.8 cu in	20"	Smoke	Tiller	Rope	Manual Tilt
25	J25RTSOS	2005	2 Cyl. / 31.8 cu in	20"	White	Tiller	Rope	Manual Tilt
25	J25TESOM	2005	2 Cyl. / 31.8 cu in	15"	White	Tiller	Electric	Manual Tilt
25	J25TELSOM	2005	2 Cyl. / 31.8 cu in	20"	White	Tiller	Electric	Manual Tilt
25	J25GTESOC	2005	2 Cyl. / 31.8 cu in	15"	Smoke	Tiller	Electric	Manual Tilt
25	J25EL5SOB	2005	2 Cyl. / 31.8 cu in	20"	White	Remote	Electric	Manual Tilt
25	J25R4SOS	2005	2 Cyl. / 53.8 cu in	15"	White	Tiller	Rope	Manual Tilt
25	J25RL4SOS	2005	2 Cyl. / 53.8 cu in	20"	White	Tiller	Rope	Manual Tilt
25	J25TE4SOS	2005	2 Cyl. / 53.8 cu in	15"	White	Tiller	Electric	Manual Tilt
25	J25TEL4SOS	2005	2 Cyl. / 53.8 cu in	20"	White	Tiller	Electric	Manual Tilt
25	J25E4SOS	2005	2 Cyl. / 53.8 cu in	15"	White	Remote	Electric	Manual Tilt
25	J25EL4SOS	2005	2 Cyl. / 53.8 cu in	20"	White	Remote	Electric	Manual Tilt
25	J25TEL4SOC	2005	3 Cyl. / 36.4 cu in	20"	White	Tiller	Electric	Manual Tilt
25	J25PL4SOC	2005	3 Cyl. / 36.4 cu in	20"	White	Remote	Electric	Power Tilt
30	E30DRINA	2012	2 Cyl. / 35.2 cu in	15"	Blue	Tiller	Rope	Manual Tilt
30	E30DRSINC	2012	2 Cyl. / 35.2 cu in	15"	White	Tiller	Rope	Manual Tilt
30	E30DRLINA	2012	2 Cyl. / 35.2 cu in	20"	Blue	Tiller	Rope	Manual Tilt
30	E30DRSLINC	2012	2 Cyl. / 35.2 cu in	20"	White	Tiller	Rope	Manual Tilt
30	E30DTELINA	2012	2 Cyl. / 35.2 cu in	20"	Blue	Tiller	Rope/Electric	Manual Tilt
30	E30TESLINC	2012	2 Cyl. / 35.2 cu in	20"	White	Tiller	Rope/Electric	Manual Tilt
30	E30DELINA	2012	2 Cyl. / 35.2 cu in	20"	Blue	Remote	Rope/Electric	Manual Tilt
30	E30DPLINA	2012	2 Cyl. / 35.2 cu in	20"	Blue	Remote	Rope/Electric	Power Tilt
30	E30DPSLINC	2012	2 Cyl. / 35.2 cu in	20"	White	Remote	Rope/Electric	Power Tilt
30	E30DTLINA	2012	2 Cyl. / 35.2 cu in	20"	Blue	Tiller	Rope/Electric	Power Tilt
30	E30DTSLINC	2012	2 Cyl. / 35.2 cu in	20"	White	Tiller	Rope/Electric	Power Tilt

Evinrude and Johnson Outboards 2005 - 2012

Horsepower	Model Number	Model Year	Engine	Shaft Length	Color	Steering	Starting	Midsection
30	E30MRLINS	2012	2 Cyl. / 35.2 cu in	20"	Black	Tiller	Rope	Manual Tilt
30	E30DRIIR	2011	2 Cyl. / 35.2 cu in	15"	Blue	Tiller	Rope	Manual Tilt
30	E30DRIIG	2011	2 Cyl. / 35.2 cu in	15"	Blue	Tiller	Rope	Manual Tilt
30	E30DRIIH	2011	2 Cyl. / 35.2 cu in	15"	Blue	Tiller	Rope	Manual Tilt
30	E30DRSIIS	2011	2 Cyl. / 35.2 cu in	15"	White	Tiller	Rope	Manual Tilt
30	E30DRSIH	2011	2 Cyl. / 35.2 cu in	15"	White	Tiller	Rope	Manual Tilt
30	E30DRLIIR	2011	2 Cyl. / 35.2 cu in	20"	Blue	Tiller	Rope	Manual Tilt
30	E30DRLIIG	2011	2 Cyl. / 35.2 cu in	20"	Blue	Tiller	Rope	Manual Tilt
30	E30DRLIHH	2011	2 Cyl. / 35.2 cu in	20"	Blue	Tiller	Rope	Manual Tilt
30	E30DRSLIIS	2011	2 Cyl. / 35.2 cu in	20"	White	Tiller	Rope	Manual Tilt
30	E30DRSLIHH	2011	2 Cyl. / 35.2 cu in	20"	White	Tiller	Rope	Manual Tilt
30	E30DTELIIR	2011	2 Cyl. / 35.2 cu in	20"	Blue	Tiller	Rope/Electric	Manual Tilt
30	E30DTELIHH	2011	2 Cyl. / 35.2 cu in	20"	Blue	Tiller	Rope/Electric	Manual Tilt
30	E30TESLIIS	2011	2 Cyl. / 35.2 cu in	20"	White	Tiller	Rope/Electric	Manual Tilt
30	E30TESLIHH	2011	2 Cyl. / 35.2 cu in	20"	White	Tiller	Rope/Electric	Manual Tilt
30	E30DELIIR	2011	2 Cyl. / 35.2 cu in	20"	Blue	Remote	Rope/Electric	Manual Tilt
30	E30DELIHH	2011	2 Cyl. / 35.2 cu in	20"	Blue	Remote	Rope/Electric	Manual Tilt
30	E30DPLIIR	2011	2 Cyl. / 35.2 cu in	20"	Blue	Remote	Rope/Electric	Power Tilt
30	E30DPLIHH	2011	2 Cyl. / 35.2 cu in	20"	Blue	Remote	Rope/Electric	Power Tilt
30	E30DPSLIIS	2011	2 Cyl. / 35.2 cu in	20"	White	Remote	Rope/Electric	Power Tilt
30	E30DPSLIHH	2011	2 Cyl. / 35.2 cu in	20"	White	Remote	Rope/Electric	Power Tilt
30	E30DTLIIR	2011	2 Cyl. / 35.2 cu in	20"	Blue	Tiller	Rope/Electric	Power Tilt
30	E30DTLIHH	2011	2 Cyl. / 35.2 cu in	20"	Blue	Tiller	Rope/Electric	Power Tilt
30	E30DTSLIIS	2011	2 Cyl. / 35.2 cu in	20"	White	Tiller	Rope/Electric	Power Tilt
30	E30DTSLIHH	2011	2 Cyl. / 35.2 cu in	20"	White	Tiller	Rope/Electric	Power Tilt
30	E30DRISC	2010	2 Cyl. / 35.2 cu in	15"	Blue	Tiller	Rope	Manual Tilt
30	E30DRLISC	2010	2 Cyl. / 35.2 cu in	20"	Blue	Tiller	Rope	Manual Tilt
30	E30DTELISC	2010	2 Cyl. / 35.2 cu in	20"	Blue	Tiller	Rope/Electric	Manual Tilt
30	E30DELISC	2010	2 Cyl. / 35.2 cu in	20"	Blue	Remote	Rope/Electric	Manual Tilt
30	E30DPLISC	2010	2 Cyl. / 35.2 cu in	20"	Blue	Remote	Rope/Electric	Power Tilt
30	E30DTLISC	2010	2 Cyl. / 35.2 cu in	20"	Blue	Tiller	Rope/Electric	Power Tilt
30	E30DRSES	2009	2 Cyl. / 35.2 cu in	15"	Blue	Tiller	Rope	Manual Tilt
30	E30DRLSES	2009	2 Cyl. / 35.2 cu in	20"	Blue	Tiller	Rope	Manual Tilt
30	E30DTELSES	2009	2 Cyl. / 35.2 cu in	20"	Blue	Tiller	Rope/Electric	Manual Tilt
30	E30DELSES	2009	2 Cyl. / 35.2 cu in	20"	Blue	Remote	Rope/Electric	Manual Tilt
30	E30DTLSES	2009	2 Cyl. / 35.2 cu in	20"	Blue	Remote	Rope/Electric	Power Tilt
30	E30DPLSES	2009	2 Cyl. / 35.2 cu in	20"	Blue	Tiller	Rope/Electric	Power Tilt
30	J30TEL4SUA	2007	3 Cyl. / 36.4 cu in	20"	White	Tiller	Electric	Manual Tilt
30	J30PL4SUA	2007	3 Cyl. / 36.4 cu in	20"	White	Remote	Electric	Power Tilt
30	J30TEL4SDR	2006	3 Cyl. / 36.4 cu in	20"	White	Tiller	Electric	Manual Tilt
30	J30PL4SDR	2006	3 Cyl. / 36.4 cu in	20"	White	Remote	Electric	Power Tilt
30	J30RSOD	2005	2 Cyl. / 31.8 cu in	15"	White	Tiller	Rope	Manual Tilt
30	J30RLSOD	2005	2 Cyl. / 31.8 cu in	20"	White	Tiller	Rope	Manual Tilt
30	J30MLSOR	2005	2 Cyl. / 31.8 cu in	20"	GR	Tiller	Rope	Manual Tilt
30	J30ELSOD	2005	2 Cyl. / 31.8 cu in	20"	White	Remote	Electric	Manual Tilt
30	J30TEL4SOC	2005	3 Cyl. / 36.4 cu in	20"	White	Tiller	Electric	Manual Tilt
30	J30PL4SOC	2005	3 Cyl. / 36.4 cu in	20"	White	Remote	Electric	Power Tilt
40	E40DRLINC	2012	2 Cyl. / 52.7 cu in	20"	Blue	Tiller	Rope	Manual Tilt
40	E40DPLINC	2012	2 Cyl. / 52.7 cu in	20"	Blue	Remote	Electric	Power Tilt
40	E40DSLINM	2012	2 Cyl. / 52.7 cu in	20"	White	Remote	Electric	Power Tilt
40	E40DTLINM	2012	2 Cyl. / 52.7 cu in	20"	Blue	Tiller	Electric	Power Tilt
40	E40DRLIIS	2011	2 Cyl. / 52.7 cu in	20"	Blue	Tiller	Rope	Manual Tilt
40	E40DPLIIS	2011	2 Cyl. / 52.7 cu in	20"	Blue	Remote	Electric	Power Tilt
40	E40DSLIIA	2011	2 Cyl. / 52.7 cu in	20"	White	Remote	Electric	Power Tilt
40	E40DTLIIA	2011	2 Cyl. / 52.7 cu in	20"	Blue	Tiller	Electric	Power Tilt
40	E40DRLISD	2010	2 Cyl. / 52.7 cu in	20"	Blue	Tiller	Rope	Manual Tilt
40	E40DRLISF	2010	2 Cyl. / 52.7 cu in	20"	Blue	Tiller	Rope	Manual Tilt
40	E40DPLISD	2010	2 Cyl. / 52.7 cu in	20"	Blue	Remote	Electric	Power Tilt
40	E40DPLISF	2010	2 Cyl. / 52.7 cu in	20"	Blue	Remote	Electric	Power Tilt
40	E40DSLISR	2010	2 Cyl. / 52.7 cu in	20"	White	Remote	Electric	Power Tilt
40	E40DSLISF	2010	2 Cyl. / 52.7 cu in	20"	White	Remote	Electric	Power Tilt
40	E40DTLISR	2010	2 Cyl. / 52.7 cu in	20"	Blue	Tiller	Electric	Power Tilt
40	E40DTLISF	2010	2 Cyl. / 52.7 cu in	20"	Blue	Tiller	Electric	Power Tilt
40	E40DRLSEE	2009	2 Cyl. / 52.7 cu in	20"	Blue	Tiller	Rope	Manual Tilt
40	E40DTLSEC	2009	2 Cyl. / 52.7 cu in	20"	Blue	Tiller	Electric	Power Tilt
40	E40DPLSEE	2009	2 Cyl. / 52.7 cu in	20"	Blue	Remote	Electric	Power Tilt
40	E40DSLSEC	2009	2 Cyl. / 52.7 cu in	20"	White	Remote	Electric	Power Tilt
40	E40DRLSCB	2008	2 Cyl. / 52.7 cu in	20"	Blue	Tiller	Rope	Manual Tilt
40	E40DPLSCB	2008	2 Cyl. / 52.7 cu in	20"	Blue	Remote	Electric	Power Tilt
40	E40DSLSCS	2008	2 Cyl. / 52.7 cu in	20"	White	Remote	Electric	Power Tilt

Evinrude and Johnson Outboards 2005 - 2012

Horsepower	Model Number	Model Year	Engine	Shaft Length	Color	Steering	Starting	Midsection
40	E40DTLSCS	2008	2 Cyl. / 52.7 cu in	20"	Blue	Tiller	Electric	Power Tilt
40	E40DRLSUM	2007	2 Cyl. / 52.7 cu in	20"	Blue	Tiller	Rope	Manual Tilt
40	E40DPLSUM	2007	2 Cyl. / 52.7 cu in	20"	Blue	Remote	Electric	Power Tilt
40	J40PL4SDE	2006	3 Cyl. / 49.7 cu in	20"	White	Remote	Electric	Power Tilt
40	BJ40PL4SDR	2006	3 Cyl. / 49.7 cu in	20"	White	Remote	Electric	Power Tilt
40	E40DRLSDA	2006	2 Cyl. / 52.7 cu in	20"	Blue	Tiller	Rope	Manual Tilt
40	E40DPLSDA	2006	2 Cyl. / 52.7 cu in	20"	Blue	Remote	Electric	Power Tilt
40	E40DELSDA	2006	2 Cyl. / 52.7 cu in	20"	Blue	Remote	Electric	Manual Tilt
40	J40RSOC	2005	2 Cyl. / 45.0 cu in	15"	White	Tiller	Rope	Manual Tilt
40	J40RLSOC	2005	2 Cyl. / 45.0 cu in	20"	White	Tiller	Rope	Manual Tilt
40	J40PLSOC	2005	2 Cyl. / 45.0 cu in	20"	White	Remote	Electric	Power Tilt
40	J40PL4SOB	2005	3 Cyl. / 49.7 cu in	20"	White	Remote	Electric	Power Tilt
40	BJ40PL4SOC	2005	3 Cyl. / 49.7 cu in	20"	White	Remote	Electric	Power Tilt
40	E40DRLSOR	2005	2 Cyl. / 52.7 cu in	20"	Blue	Tiller	Rope	Manual Tilt
40	E40DELSOR	2005	2 Cyl. / 52.7 cu in	20"	Blue	Remote	Electric	Manual Tilt
40	E40DPLSOR	2005	2 Cyl. / 52.7 cu in	20"	Blue	Remote	Electric	Power Tilt
50	E50DPLINC	2012	2 Cyl. / 52.7 cu in	20"	Blue	Remote	Electric	Power Tilt
50	E50DSLINM	2012	2 Cyl. / 52.7 cu in	20"	White	Remote	Electric	Power Tilt
50	E50DTLINM	2012	2 Cyl. / 52.7 cu in	20"	Blue	Tiller	Electric	Power Tilt
50	E50DPLIIS	2011	2 Cyl. / 52.7 cu in	20"	Blue	Remote	Electric	Power Tilt
50	E50DSLIIA	2011	2 Cyl. / 52.7 cu in	20"	White	Remote	Electric	Power Tilt
50	E50DTLIIA	2011	2 Cyl. / 52.7 cu in	20"	Blue	Tiller	Electric	Power Tilt
50	E50DPLISD	2010	2 Cyl. / 52.7 cu in	20"	Blue	Remote	Electric	Power Tilt
50	E50DPLISF	2010	2 Cyl. / 52.7 cu in	20"	Blue	Remote	Electric	Power Tilt
50	E50DSLISR	2010	2 Cyl. / 52.7 cu in	20"	White	Remote	Electric	Power Tilt
50	E50DSLISF	2010	2 Cyl. / 52.7 cu in	20"	White	Remote	Electric	Power Tilt
50	E50DTLISR	2010	2 Cyl. / 52.7 cu in	20"	Blue	Tiller	Electric	Power Tilt
50	E50DTLISF	2010	2 Cyl. / 52.7 cu in	20"	Blue	Tiller	Electric	Power Tilt
50	E50DTLSEC	2009	2 Cyl. / 52.7 cu in	20"	Blue	Tiller	Electric	Power Tilt
50	E50DSLSEC	2009	2 Cyl. / 52.7 cu in	20"	White	Tiller	Electric	Power Tilt
50	E50DPLSEE	2009	2 Cyl. / 52.7 cu in	20"	Blue	Remote	Electric	Power Tilt
50	E50DPLSCB	2008	2 Cyl. / 52.7 cu in	20"	Blue	Remote	Electric	Power Tilt
50	E50DSLSCS	2008	2 Cyl. / 52.7 cu in	20"	White	Remote	Electric	Power Tilt
50	E50DTLSCS	2008	2 Cyl. / 52.7 cu in	20"	Blue	Tiller	Electric	Power Tilt
50	E50DPLSUM	2007	2 Cyl. / 52.7 cu in	20"	Blue	Remote	Electric	Power Tilt
50	E50MDRLSUC	2007	2 Cyl. / 52.7 cu in	20"	Black	Tiller	Rope	Manual Tilt
50	J50PL4SDE	2006	3 Cyl. / 49.7 cu in	20"	White	Remote	Electric	Power Tilt
50	BJ50PL4SDR	2006	3 Cyl. / 49.7 cu in	20"	White	Remote	Electric	Power Tilt
50	E50MDRLSDZ	2006	2 Cyl. / 52.7 cu in	20"	Black	Tiller	Rope	Manual Tilt
50	E50MDRLSDS	2006	2 Cyl. / 52.7 cu in	20"	Black	Tiller	Rope	Manual Tilt
50	E50DPLSDA	2006	2 Cyl. / 52.7 cu in	20"	Blue	Remote	Electric	Power Tilt
50	J50PLSOC	2005	2 Cyl. / 45.0 cu in	20"	White	Remote	Electric	Power Tilt
50	J50PL4SOB	2005	3 Cyl. / 49.7 cu in	20"	White	Remote	Electric	Power Tilt
50	BJ50PL4SOC	2005	3 Cyl. / 49.7 cu in	20"	White	Remote	Electric	Power Tilt
50	E50DPLSOR	2005	2 Cyl. / 52.7 cu in	20"	Blue	Remote	Electric	Power Tilt
55	J55APRLSOM	2005	2 Cyl. / 45.0 cu in	20"	Black	Tiller	Rope	Manual Tilt
55	J55MLSOR	2005	2 Cyl. / 45.0 cu in	20"	Black	Tiller	Rope	Manual Tilt
55	J55WRLSOE	2005	2 Cyl. / 45.0 cu in	20"	Smoke	Tiller	Rope	Manual Tilt
55	J55WRYSOB	2005	2 Cyl. / 45.0 cu in	22.5"	Smoke	Tiller	Rope	Manual Tilt
55	E55MRLINB	2012	2 Cyl. / 52.7 cu in	20"	Black	Tiller	Rope	Manual Tilt
55	E55MJRLINB	2012	2 Cyl. / 52.7 cu in	20"	Black	Tiller	Rope	Manual Tilt
55	E55MRLIIM	2011	2 Cyl. / 52.7 cu in	20"	Black	Tiller	Rope	Manual Tilt
55	E55MJRLIIM	2011	2 Cyl. / 52.7 cu in	20"	Black	Tiller	Rope	Manual Tilt
55	E55MRLISA	2010	2 Cyl. / 52.7 cu in	20"	Black	Tiller	Rope	Manual Tilt
55	E55MJRLISA	2010	2 Cyl. / 52.7 cu in	20"	Black	Tiller	Rope	Manual Tilt
55	E55MRLSER	2009	2 Cyl. / 52.7 cu in	20"	Black	Remote	Rope	Manual Tilt
55	E55MJRLSER	2009	2 Cyl. / 52.7 cu in	20"	Black	Tiller	Rope	Manual Tilt
55	E55MRLSCC	2008	2 Cyl. / 52.7 cu in	20"	Black	Tiller	Rope	Manual Tilt
55	E55MJRLSCC	2008	2 Cyl. / 52.7 cu in	20"	Black	Tiller	Rope	Manual Tilt
60	E60DPLINC	2012	2 Cyl. / 52.7 cu in	20"	Blue	Remote	Electric	Power Tilt
60	E60DSLINM	2012	2 Cyl. / 52.7 cu in	20"	White	Remote	Electric	Power Tilt
60	E60DTLINM	2012	2 Cyl. / 52.7 cu in	20"	Blue	Tiller	Electric	Power Tilt
60	E60DPLIIS	2011	2 Cyl. / 52.7 cu in	20"	Blue	Remote	Electric	Power Tilt
60	E60DSLIIA	2011	2 Cyl. / 52.7 cu in	20"	White	Remote	Electric	Power Tilt
60	E60DTLIIA	2011	2 Cyl. / 52.7 cu in	20"	Blue	Tiller	Electric	Power Tilt
60	E60DPLISD	2010	2 Cyl. / 52.7 cu in	20"	Blue	Remote	Electric	Power Tilt
60	E60DPLISF	2010	2 Cyl. / 52.7 cu in	20"	Blue	Remote	Electric	Power Tilt
60	E60DSLISR	2010	2 Cyl. / 52.7 cu in	20"	White	Remote	Electric	Power Tilt
60	E60DSLISF	2010	2 Cyl. / 52.7 cu in	20"	White	Remote	Electric	Power Tilt
60	E60DTLISR	2010	2 Cyl. / 52.7 cu in	20"	Blue	Tiller	Electric	Power Tilt

Evinrude and Johnson Outboards 2005 - 2012

Horsepower	Model Number	Model Year	Engine	Shaft Length	Color	Steering	Starting	Midsection
60	E60DTLISF	2010	2 Cyl. / 52.7 cu in	20"	Blue	Tiller	Electric	Power Tilt
60	E60DTLSEC	2009	2 Cyl. / 52.7 cu in	20"	Blue	Tiller	Electric	Power Tilt
60	E60DPLSEE	2009	2 Cyl. / 52.7 cu in	20"	Blue	Remote	Electric	Power Tilt
60	E60DSLSEC	2009	2 Cyl. / 52.7 cu in	20"	White	Remote	Electric	Power Tilt
60	E60DPLSCB	2008	2 Cyl. / 52.7 cu in	20"	Blue	Remote	Electric	Power Tilt
60	E60DSLSCS	2008	2 Cyl. / 52.7 cu in	20"	White	Remote	Electric	Power Tilt
60	E60DTLSCS	2008	2 Cyl. / 52.7 cu in	20"	Blue	Tiller	Electric	Power Tilt
60	E60DPLSUM	2007	2 Cyl. / 52.7 cu in	20"	Blue	Remote	Electric	Power Tilt
60	E60DPLSDA	2006	2 Cyl. / 52.7 cu in	20"	Blue	Remote	Electric	Power Tilt
60	J60PL4SDM	2006	4 Cyl. / 79.2 cu in	20"	White	Remote	Electric	Power Tilt
60	BJ60PL4SDM	2006	4 Cyl. / 79.2 cu in	20"	White	Remote	Electric	Power Tilt
60	E60DPLSOR	2005	2 Cyl. / 52.7 cu in	20"	Blue	Remote	Electric	Power Tilt
60	E60WDRLSOS	2005	2 Cyl. / 52.7 cu in	20"	Blue	Tiller	Rope	Manual Tilt
60	E60WDRLSOS	2005	2 Cyl. / 52.7 cu in	22.5"	Blue	Tiller	Rope	Manual Tilt
60	J60PL4SOA	2005	4 Cyl. / 79.2 cu in	20"	White	Remote	Electric	Power Tilt
60	BJ60PL4SOA	2005	4 Cyl. / 79.2 cu in	20"	White	Remote	Electric	Power Tilt
65	E65WDRLINM	2012	2 Cyl. / 52.7 cu in	20"	Blue	Tiller	Rope	Manual Tilt
65	E65WDRLINM	2012	2 Cyl. / 52.7 cu in	22.5"	Blue	Tiller	Rope	Manual Tilt
65	E65WDRLIIA	2011	2 Cyl. / 52.7 cu in	20"	Blue	Tiller	Rope	Manual Tilt
65	E65WDRLIIA	2011	2 Cyl. / 52.7 cu in	22.5"	Blue	Tiller	Rope	Manual Tilt
65	E65WDRLISR	2010	2 Cyl. / 52.7 cu in	20"	Blue	Tiller	Rope	Manual Tilt
65	E65WDRLISF	2010	2 Cyl. / 52.7 cu in	20"	Blue	Tiller	Rope	Manual Tilt
65	E65WDRLYISR	2010	2 Cyl. / 52.7 cu in	22.5"	Blue	Tiller	Rope	Manual Tilt
65	E65WDRLYISF	2010	2 Cyl. / 52.7 cu in	22.5"	Blue	Tiller	Rope	Manual Tilt
65	E65WDRLSEC	2009	2 Cyl. / 52.7 cu in	20"	Blue	Tiller	Rope	Manual Tilt
65	E65WDRLSEC	2009	2 Cyl. / 52.7 cu in	22.5"	Blue	Tiller	Rope	Manual Tilt
65	E65WDRLSCS	2008	2 Cyl. / 52.7 cu in	20"	Blue	Tiller	Rope	Manual Tilt
65	E65WDRLSCS	2008	2 Cyl. / 52.7 cu in	22.5"	Blue	Tiller	Rope	Manual Tilt
65	E65JDPLSOS	2005	3 Cyl. / 79.0 cu in	20"	Blue	Remote	Electric	Power Tilt
70	E70DPLSOS	2005	2 Cyl. / 52.7 cu in	20"	Blue	Remote	Electric	Power Tilt
70	J70PL4SOA	2005	4 Cyl. / 79.2 cu in	20"	White	Remote	Electric	Power Tilt
70	BJ70PL4SOA	2005	4 Cyl. / 79.2 cu in	20"	White	Remote	Electric	Power Tilt
70	J70PL4SDM	2006	4 Cyl. / 79.2 cu in	20"	White	Remote	Electric	Power Tilt
70	BJ70PL4SDM	2006	4 Cyl. / 79.2 cu in	20"	White	Remote	Electric	Power Tilt
75	E75DPLINC	2012	3 Cyl. / 79.1 cu in	20"	Blue	Remote	Electric	Power Tilt
75	E75DSLINM	2012	3 Cyl. / 79.1 cu in	20"	White	Remote	Electric	Power Tilt
75	E75DPLIIS	2011	3 Cyl. / 79.1 cu in	20"	Blue	Remote	Electric	Power Tilt
75	E75DPLIIA	2011	3 Cyl. / 79.1 cu in	20"	White	Remote	Electric	Power Tilt
75	E75DPLISD	2010	3 Cyl. / 79.1 cu in	20"	Blue	Remote	Electric	Power Tilt
75	E75DPLISF	2010	3 Cyl. / 79.1 cu in	20"	Blue	Remote	Electric	Power Tilt
75	E75DPLISR	2010	3 Cyl. / 79.1 cu in	20"	White	Remote	Electric	Power Tilt
75	E75DPLISF	2010	3 Cyl. / 79.1 cu in	20"	White	Remote	Electric	Power Tilt
75	E75DPLSEE	2009	3 Cyl. / 79.1 cu in	20"	Blue	Remote	Electric	Power Tilt
75	E75DSLSEC	2009	3 Cyl. / 79.1 cu in	20"	White	Remote	Electric	Power Tilt
75	E75DPLSCB	2008	3 Cyl. / 79.1 cu in	20"	Blue	Remote	Electric	Power Tilt
75	E75DSLSCS	2008	3 Cyl. / 79.1 cu in	20"	White	Remote	Electric	Power Tilt
75	E75DPLSUM	2007	3 Cyl. / 79.0 cu in	20"	Blue	Remote	Electric	Power Tilt
75	E75DPLSDA	2006	3 Cyl. / 79.0 cu in	20"	Blue	Remote	Electric	Power Tilt
75	E75DPLSOR	2005	3 Cyl. / 79.0 cu in	20"	Blue	Remote	Electric	Power Tilt
90	E90DPLINC	2012	3 Cyl. / 79.1 cu in	20"	Blue	Remote	Electric	Power Tilt
90	BE90DPLINB	2012	3 Cyl. / 79.1 cu in	20"	Blue	Remote	Electric	Power Tilt
90	E90DPXINC	2012	3 Cyl. / 79.1 cu in	25"	White	Remote	Electric	Power Tilt
90	BE90DPXINB	2012	3 Cyl. / 79.1 cu in	25"	White	Remote	Electric	Power Tilt
90	E90DSLINS	2012	3 Cyl. / 79.1 cu in	20"	White	Remote	Electric	Power Tilt
90	BE90DSLINB	2012	3 Cyl. / 79.1 cu in	20"	White	Remote	Electric	Power Tilt
90	E90WDELINM	2012	3 Cyl. / 79.1 cu in	20"	Blue	Remote	Electric	Manual Tilt
90	BE90WELINM	2012	3 Cyl. / 79.1 cu in	20"	Blue	Remote	Electric	Manual Tilt
90	E90WDEXINM	2012	3 Cyl. / 79.1 cu in	25"	White	Remote	Electric	Manual Tilt
90	BE90WEXINM	2012	3 Cyl. / 79.1 cu in	25"	White	Remote	Electric	Manual Tilt
90	E90DPLIIS	2011	3 Cyl. / 79.1 cu in	20"	Blue	Remote	Electric	Power Tilt
90	BE90DPLIIM	2011	3 Cyl. / 79.1 cu in	20"	Blue	Remote	Electric	Power Tilt
90	E90DPXIIS	2011	3 Cyl. / 79.1 cu in	25"	White	Remote	Electric	Power Tilt
90	BE90DPXIIM	2011	3 Cyl. / 79.1 cu in	25"	White	Remote	Electric	Power Tilt
90	E90DSLIID	2011	3 Cyl. / 79.1 cu in	20"	White	Remote	Electric	Power Tilt
90	BE90DSLIIIM	2011	3 Cyl. / 79.1 cu in	20"	White	Remote	Electric	Power Tilt
90	E90WDELIIA	2011	3 Cyl. / 79.1 cu in	20"	Blue	Remote	Electric	Manual Tilt
90	BE90WELIIA	2011	3 Cyl. / 79.1 cu in	20"	Blue	Remote	Electric	Manual Tilt
90	E90WDEXIIA	2011	3 Cyl. / 79.1 cu in	25"	White	Remote	Electric	Manual Tilt
90	BE90WEXIIA	2011	3 Cyl. / 79.1 cu in	25"	White	Remote	Electric	Manual Tilt
90	E90DPLISD	2010	3 Cyl. / 79.1 cu in	20"	Blue	Remote	Electric	Power Tilt

Evinrude and Johnson Outboards 2005 - 2012

Horsepower	Model Number	Model Year	Engine	Shaft Length	Color	Steering	Starting	Midsection
90	E90DPLISF	2010	3 Cyl. / 79.1 cu in	20"	Blue	Remote	Electric	Power Tilt
90	BE90DPLISA	2010	3 Cyl. / 79.1 cu in	20"	Blue	Remote	Electric	Power Tilt
90	BE90DPLISF	2010	3 Cyl. / 79.1 cu in	20"	Blue	Remote	Electric	Power Tilt
90	E90DPXISD	2010	3 Cyl. / 79.1 cu in	25"	White	Remote	Electric	Power Tilt
90	E90DPXISF	2010	3 Cyl. / 79.1 cu in	25"	White	Remote	Electric	Power Tilt
90	BE90DPXISA	2010	3 Cyl. / 79.1 cu in	25"	White	Remote	Electric	Power Tilt
90	BE90DPXISF	2010	3 Cyl. / 79.1 cu in	25"	White	Remote	Electric	Power Tilt
90	E90DSLISE	2010	3 Cyl. / 79.1 cu in	20"	White	Remote	Electric	Power Tilt
90	E90DSLISF	2010	3 Cyl. / 79.1 cu in	20"	White	Remote	Electric	Power Tilt
90	BE90DSLISA	2010	3 Cyl. / 79.1 cu in	20"	White	Remote	Electric	Power Tilt
90	BE90DSLISF	2010	3 Cyl. / 79.1 cu in	20"	White	Remote	Electric	Power Tilt
90	E90WDELISR	2010	3 Cyl. / 79.1 cu in	20"	Blue	Remote	Electric	Manual Tilt
90	E90WDELISF	2010	3 Cyl. / 79.1 cu in	20"	Blue	Remote	Electric	Manual Tilt
90	BE90WELISR	2010	3 Cyl. / 79.1 cu in	20"	Blue	Remote	Electric	Manual Tilt
90	BE90WELISF	2010	3 Cyl. / 79.1 cu in	20"	Blue	Remote	Electric	Manual Tilt
90	E90WDEXISR	2010	3 Cyl. / 79.1 cu in	25"	White	Remote	Electric	Manual Tilt
90	E90WDEXISF	2010	3 Cyl. / 79.1 cu in	25"	White	Remote	Electric	Manual Tilt
90	BE90WEXISR	2010	3 Cyl. / 79.1 cu in	25"	White	Remote	Electric	Manual Tilt
90	BE90WEXISF	2010	3 Cyl. / 79.1 cu in	25"	White	Remote	Electric	Manual Tilt
90	E90DPLSEE	2009	3 Cyl. / 79.1 cu in	20"	Blue	Remote	Electric	Power Tilt
90	BE90DPLSER	2009	3 Cyl. / 79.1 cu in	20"	Blue	Remote	Electric	Power Tilt
90	E90DSLSEB	2009	3 Cyl. / 79.1 cu in	20"	White	Remote	Electric	Power Tilt
90	E90DPXSEE	2009	3 Cyl. / 79.1 cu in	25"	White	Remote	Electric	Power Tilt
90	BE90DPXSER	2009	3 Cyl. / 79.1 cu in	25"	White	Remote	Electric	Power Tilt
90	E90DMXSES	2009	3 Cyl. / 79.1 cu in	25"	Green	Remote	Electric	Power Tilt
90	E90WDELSEC	2009	3 Cyl. / 79.1 cu in	20"	Blue	Remote	Electric	Manual Tilt
90	E90WDEXSEC	2009	3 Cyl. / 79.1 cu in	25"	White	Remote	Electric	Manual Tilt
90	E90DPLSCB	2008	3 Cyl. / 79.1 cu in	20"	Blue	Remote	Electric	Power Tilt
90	BE90DPLSCB	2008	3 Cyl. / 79.1 cu in	20"	Blue	Remote	Electric	Power Tilt
90	E90DPXSCB	2008	3 Cyl. / 79.1 cu in	25"	White	Remote	Electric	Power Tilt
90	BE90DPXSCB	2008	3 Cyl. / 79.1 cu in	25"	White	Remote	Electric	Power Tilt
90	E90DSLSCM	2008	3 Cyl. / 79.1 cu in	20"	White	Remote	Electric	Power Tilt
90	BE90DSLSCM	2008	3 Cyl. / 79.1 cu in	20"	White	Remote	Electric	Manual Tilt
90	E90WDELSCS	2008	3 Cyl. / 79.1 cu in	20"	Blue	Remote	Electric	Manual Tilt
90	BE90WDELSCS	2008	3 Cyl. / 79.1 cu in	20"	Blue	Remote	Electric	Manual Tilt
90	E90WDEXSCS	2008	3 Cyl. / 79.1 cu in	25"	White	Remote	Electric	Manual Tilt
90	BE90WDEXSCS	2008	3 Cyl. / 79.1 cu in	25"	White	Remote	Electric	Manual Tilt
90	E90DPLSUM	2007	3 Cyl. / 79.0 cu in	20"	Blue	Remote	Electric	Power Tilt
90	BE90DPLSUS	2007	3 Cyl. / 79.0 cu in	20"	Blue	Remote	Electric	Power Tilt
90	E90DPXSUM	2007	3 Cyl. / 79.0 cu in	25"	White	Remote	Electric	Power Tilt
90	BE90DPXSUS	2007	3 Cyl. / 79.0 cu in	25"	White	Remote	Electric	Power Tilt
90	E90DLSUA	2007	3 Cyl. / 79.0 cu in	20"	White	Remote	Electric	Power Tilt
90	BE90DLSUS	2007	3 Cyl. / 79.0 cu in	20"	White	Remote	Electric	Power Tilt
90	J90PL4SDA	2006	4 Cyl. / 119.0 cu in	20"	White	Remote	Electric	Power Tilt
90	J90PL4SDG	2006	4 Cyl. / 119.0 cu in	20"	White	Remote	Electric	Power Tilt
90	BJ90PL4SDA	2006	4 Cyl. / 119.0 cu in	20"	White	Remote	Electric	Power Tilt
90	BJ90PL4SDG	2006	4 Cyl. / 119.0 cu in	20"	White	Remote	Electric	Power Tilt
90	J90PX4SDA	2006	4 Cyl. / 119.0 cu in	25"	White	Remote	Electric	Power Tilt
90	J90PX4SDG	2006	4 Cyl. / 119.0 cu in	25"	White	Remote	Electric	Power Tilt
90	BJ90PX4SDA	2006	4 Cyl. / 119.0 cu in	25"	White	Remote	Electric	Power Tilt
90	BJ90PX4SDG	2006	4 Cyl. / 119.0 cu in	25"	White	Remote	Electric	Power Tilt
90	E90DPLSDA	2006	3 Cyl. / 79.0 cu in	20"	Blue	Remote	Electric	Power Tilt
90	E90DPXSDA	2006	3 Cyl. / 79.0 cu in	25"	White	Remote	Electric	Power Tilt
90	E90DSLSDR	2006	3 Cyl. / 79.0 cu in	20"	White	Remote	Electric	Power Tilt
90	J90PLSDM	2006	60° V-4/105.4 cu in	20"	White	Remote	Electric	Power Tilt
90	J90GLSDE	2006	60° V-4/105.4 cu in	20"	Smoke	Remote	Electric	Power Tilt
90	J90PXSDR	2006	60° V-4/105.4 cu in	25"	White	Remote	Electric	Power Tilt
90	J90PL4SOR	2005	4 Cyl. / 119.0 cu in	20"	White	Remote	Electric	Power Tilt
90	BJ90PL4SOR	2005	4 Cyl. / 119.0 cu in	20"	White	Remote	Electric	Power Tilt
90	J90PX4SOR	2005	4 Cyl. / 119.0 cu in	25"	White	Remote	Electric	Power Tilt
90	BJ90PX4SOR	2005	4 Cyl. / 119.0 cu in	25"	White	Remote	Electric	Power Tilt
90	E90DPLSOR	2005	3 Cyl. / 79.0 cu in	20"	Blue	Remote	Electric	Power Tilt
90	E90DPXSOR	2005	3 Cyl. / 79.0 cu in	25"	White	Remote	Electric	Power Tilt
90	E90DSL SOC	2005	3 Cyl. / 79.0 cu in	20"	White	Remote	Electric	Power Tilt
90	E90WDPLSOS	2005	3 Cyl. / 79.0 cu in	20"	Blue	Remote	Electric	Power Tilt
90	E90WDELSOS	2005	3 Cyl. / 79.0 cu in	20"	Blue	Remote	Electric	Manual Tilt
90	E90WDRLSOS	2005	3 Cyl. / 79.0 cu in	20"	Blue	Tiller	Rope	Manual Tilt
90	E90WDRXSOS	2005	3 Cyl. / 79.0 cu in	25"	Blue	Tiller	Rope	Manual Tilt
90	J90PLSOA	2005	60° V-4/105.4 cu in	20"	White	Remote	Electric	Power Tilt
90	J90GLSOB	2005	60° V-4/105.4 cu in	20"	Smoke	Remote	Electric	Power Tilt

Evinrude and Johnson Outboards 2005 - 2012

Horsepower	Model Number	Model Year	Engine	Shaft Length	Color	Steering	Starting	Midsection
90	J90PXSOC	2005	60° V-4/105.4 cu in	25"	White	Remote	Electric	Power Tilt
115	E115DPLINE	2012	60° V-4/105.4 cu in	20"	Blue	Remote	Electric	Power Tilt
115	E115DPXINE	2012	60° V-4/105.4 cu in	25"	White	Remote	Electric	Power Tilt
115	E115DCXINM	2012	60° V-4/105.4 cu in	25"	White	Remote	Electric	Power Tilt
115	E115DBXINE	2012	60° V-4/105.4 cu in	25"	Blue	Remote	Electric	Power Tilt
115	E115DSLIME	2012	60° V-4/105.4 cu in	20"	White	Remote	Electric	Power Tilt
115	E115DHLINA	2012	60° V-4/105.4 cu in	20"	Blue	Remote	Electric	Power Tilt
115	E115DHXINA	2012	60° V-4/105.4 cu in	25"	White	Remote	Electric	Power Tilt
115	E115HSLINA	2012	60° V-4/105.4 cu in	20"	White	Remote	Electric	Power Tilt
115	E115DPLIIB	2011	60° V-4/105.4 cu in	20"	Blue	Remote	Electric	Power Tilt
115	E115DPXIIB	2011	60° V-4/105.4 cu in	25"	White	Remote	Electric	Power Tilt
115	E115DCXIIA	2011	60° V-4/105.4 cu in	25"	White	Remote	Electric	Power Tilt
115	E115DBXIIB	2011	60° V-4/105.4 cu in	25"	Blue	Remote	Electric	Power Tilt
115	E115DSLIIIB	2011	60° V-4/105.4 cu in	20"	White	Remote	Electric	Power Tilt
115	E115DHLIIR	2011	60° V-4/105.4 cu in	20"	Blue	Remote	Electric	Power Tilt
115	E115DHXIIR	2011	60° V-4/105.4 cu in	25"	White	Remote	Electric	Power Tilt
115	E115HSLIIR	2011	60° V-4/105.4 cu in	20"	White	Remote	Electric	Power Tilt
115	E115DPLISM	2010	60° V-4/105.4 cu in	20"	Blue	Remote	Electric	Power Tilt
115	E115DPLISF	2010	60° V-4/105.4 cu in	20"	Blue	Remote	Electric	Power Tilt
115	E115DPXISM	2010	60° V-4/105.4 cu in	25"	White	Remote	Electric	Power Tilt
115	E115DPXISF	2010	60° V-4/105.4 cu in	25"	White	Remote	Electric	Power Tilt
115	E115DCXISR	2010	60° V-4/105.4 cu in	25"	White	Remote	Electric	Power Tilt
115	E115DCXISF	2010	60° V-4/105.4 cu in	25"	White	Remote	Electric	Power Tilt
115	E115DBXISM	2010	60° V-4/105.4 cu in	25"	Blue	Remote	Electric	Power Tilt
115	E115DBXISF	2010	60° V-4/105.4 cu in	25"	Blue	Remote	Electric	Power Tilt
115	E115DSLISM	2010	60° V-4/105.4 cu in	20"	White	Remote	Electric	Power Tilt
115	E115DSLISF	2010	60° V-4/105.4 cu in	20"	White	Remote	Electric	Power Tilt
115	E115DHLISC	2010	60° V-4/105.4 cu in	20"	Blue	Remote	Electric	Power Tilt
115	E115DHLISF	2010	60° V-4/105.4 cu in	20"	Blue	Remote	Electric	Power Tilt
115	E115DHXISC	2010	60° V-4/105.4 cu in	25"	White	Remote	Electric	Power Tilt
115	E115DHXISF	2010	60° V-4/105.4 cu in	25"	White	Remote	Electric	Power Tilt
115	E115HSLISC	2010	60° V-4/105.4 cu in	20"	White	Remote	Electric	Power Tilt
115	E115HSLISF	2010	60° V-4/105.4 cu in	20"	White	Remote	Electric	Power Tilt
115	E115DPLSEF	2009	60° V-4/105.4 cu in	20"	Blue	Remote	Electric	Power Tilt
115	E115DPLSEA	2009	60° V-4/105.4 cu in	20"	Blue	Remote	Electric	Power Tilt
115	E115DPXSEF	2009	60° V-4/105.4 cu in	25"	White	Remote	Electric	Power Tilt
115	E115DPXSEA	2009	60° V-4/105.4 cu in	25"	White	Remote	Electric	Power Tilt
115	E115DCXSEF	2009	60° V-4/105.4 cu in	25"	White	Remote	Electric	Power Tilt
115	E115DCXSEC	2009	60° V-4/105.4 cu in	25"	White	Remote	Electric	Power Tilt
115	E115DBXSEF	2009	60° V-4/105.4 cu in	25"	Blue	Remote	Electric	Power Tilt
115	E115DBXSEA	2009	60° V-4/105.4 cu in	25"	Blue	Remote	Electric	Power Tilt
115	E115DSLSEF	2009	60° V-4/105.4 cu in	20"	White	Remote	Electric	Power Tilt
115	E115DSLSEA	2009	60° V-4/105.4 cu in	20"	White	Remote	Electric	Power Tilt
115	E115DHLSES	2009	60° V-4/105.4 cu in	20"	Blue	Remote	Electric	Power Tilt
115	E115DHXSES	2009	60° V-4/105.4 cu in	20"	White	Remote	Electric	Power Tilt
115	E115HLSSES	2009	60° V-4/105.4 cu in	20"	White	Remote	Electric	Power Tilt
115	E115DPLSCR	2008	60° V-4/105.4 cu in	20"	Blue	Remote	Electric	Power Tilt
115	E115DPXSCR	2008	60° V-4/105.4 cu in	25"	White	Remote	Electric	Power Tilt
115	E115DCXSCS	2008	60° V-4/105.4 cu in	25"	White	Remote	Electric	Power Tilt
115	E115DBXSCR	2008	60° V-4/105.4 cu in	25"	Blue	Remote	Electric	Power Tilt
115	E115DSLSCR	2008	60° V-4/105.4 cu in	20"	White	Remote	Electric	Power Tilt
115	E115DPLSUC	2007	60° V-4/105.4 cu in	20"	Blue	Remote	Electric	Power Tilt
115	E115DPXSUC	2007	60° V-4/105.4 cu in	25"	White	Remote	Electric	Power Tilt
115	E115DBXSUC	2007	60° V-4/105.4 cu in	25"	Blue	Remote	Electric	Power Tilt
115	E115DSLSEC	2007	60° V-4/105.4 cu in	20"	White	Remote	Electric	Power Tilt
115	J115PL4SDA	2006	4 Cyl. / 119.0 cu in	20"	White	Remote	Electric	Power Tilt
115	J115PL4SDG	2006	4 Cyl. / 119.0 cu in	20"	White	Remote	Electric	Power Tilt
115	BJ115L4SDA	2006	4 Cyl. / 119.0 cu in	20"	White	Remote	Electric	Power Tilt
115	BJ115L4SDG	2006	4 Cyl. / 119.0 cu in	20"	White	Remote	Electric	Power Tilt
115	J115PX4SDA	2006	4 Cyl. / 119.0 cu in	25"	White	Remote	Electric	Power Tilt
115	J115PX4SDG	2006	4 Cyl. / 119.0 cu in	25"	White	Remote	Electric	Power Tilt
115	BJ115X4SDA	2006	4 Cyl. / 119.0 cu in	25"	White	Remote	Electric	Power Tilt
115	BJ115X4SDG	2006	4 Cyl. / 119.0 cu in	25"	White	Remote	Electric	Power Tilt
115	J115PLSDA	2006	60° V-4/105.4 cu in	20"	White	Remote	Electric	Power Tilt
115	J115PXSDA	2006	60° V-4/105.4 cu in	25"	White	Remote	Electric	Power Tilt
115	J115GLSDE	2006	60° V-4/105.4 cu in	20"	Smoke	Remote	Electric	Power Tilt
115	E115FPLSDS	2006	60° V-4/105.4 cu in	20"	Blue	Remote	Electric	Power Tilt
115	E115FPXSDS	2006	60° V-4/105.4 cu in	25"	White	Remote	Electric	Power Tilt
115	E115FSLSDS	2006	60° V-4/105.4 cu in	20"	White	Remote	Electric	Power Tilt
115	J115PL4SOR	2005	4 Cyl. / 119.0 cu in	20"	White	Remote	Electric	Power Tilt

Evinrude and Johnson Outboards 2005 - 2012

Horsepower	Model Number	Model Year	Engine	Shaft Length	Color	Steering	Starting	Midsection
115	BJ115L4SOR	2005	4 Cyl. / 119.0 cu in	20"	White	Remote	Electric	Power Tilt
115	J115PX4SOR	2005	4 Cyl. / 119.0 cu in	25"	White	Remote	Electric	Power Tilt
115	BJ115X4SOR	2005	4 Cyl. / 119.0 cu in	25"	White	Remote	Electric	Power Tilt
115	J115PLSOR	2005	60° V-4/105.4 cu in	20"	White	Remote	Electric	Power Tilt
115	J115PXSOR	2005	60° V-4/105.4 cu in	25"	White	Remote	Electric	Power Tilt
115	J115GLSOB	2005	60° V-4/105.4 cu in	20"	Smoke	Remote	Electric	Power Tilt
115	J115WPLSOC	2005	60° V-4/105.4 cu in	20"	Smoke	Remote	Electric	Power Tilt
130	E130DPLINA	2012	60° V-4/105.4 cu in	20"	Blue	Remote	Electric	Power Tilt
130	E130DPXINA	2012	60° V-4/105.4 cu in	25"	White	Remote	Electric	Power Tilt
130	E130DCXINA	2012	60° V-4/105.4 cu in	25"	White	Remote	Electric	Power Tilt
130	E130DSLINA	2012	60° V-4/105.4 cu in	20"	White	Remote	Electric	Power Tilt
130	E130DPLIIR	2011	60° V-4/105.4 cu in	20"	Blue	Remote	Electric	Power Tilt
130	E130DPXIIR	2011	60° V-4/105.4 cu in	25"	White	Remote	Electric	Power Tilt
130	E130DCXIIR	2011	60° V-4/105.4 cu in	25"	White	Remote	Electric	Power Tilt
130	E130DSLIIIR	2011	60° V-4/105.4 cu in	20"	White	Remote	Electric	Power Tilt
130	E130DPLISC	2010	60° V-4/105.4 cu in	20"	Blue	Remote	Electric	Power Tilt
130	E130DPLISF	2010	60° V-4/105.4 cu in	20"	Blue	Remote	Electric	Power Tilt
130	E130DPXISC	2010	60° V-4/105.4 cu in	25"	White	Remote	Electric	Power Tilt
130	E130DPXISF	2010	60° V-4/105.4 cu in	25"	White	Remote	Electric	Power Tilt
130	E130DCXISC	2010	60° V-4/105.4 cu in	25"	White	Remote	Electric	Power Tilt
130	E130DCXISF	2010	60° V-4/105.4 cu in	25"	White	Remote	Electric	Power Tilt
130	E130DSLISC	2010	60° V-4/105.4 cu in	20"	White	Remote	Electric	Power Tilt
130	E130DSLISF	2010	60° V-4/105.4 cu in	20"	White	Remote	Electric	Power Tilt
130	E130DPLSES	2009	60° V-4/105.4 cu in	20"	Blue	Remote	Electric	Power Tilt
130	E130DPXSES	2009	60° V-4/105.4 cu in	25"	White	Remote	Electric	Power Tilt
130	E130DCXSES	2009	60° V-4/105.4 cu in	25"	White	Remote	Electric	Power Tilt
130	E130DSLSES	2009	60° V-4/105.4 cu in	20"	White	Remote	Electric	Power Tilt
135	E135FPLSOB	2005	60° V-6/158.1 cu in	20"	Blue	Remote	Electric	Power Tilt
135	E135FPXSOB	2005	60° V-6/158.1 cu in	25"	White	Remote	Electric	Power Tilt
135	E135FCXSOB	2005	60° V-6/158.1 cu in	25"	White	Remote	Electric	Power Tilt
135	E135FSLSOB	2005	60° V-6/158.1 cu in	20"	White	Remote	Electric	Power Tilt
135	E135FPLSDE	2006	60° V-6/158.1 cu in	20"	Blue	Remote	Electric	Power Tilt
135	E135FPXSDE	2006	60° V-6/158.1 cu in	25"	White	Remote	Electric	Power Tilt
135	E135FCXSDE	2006	60° V-6/158.1 cu in	25"	White	Remote	Electric	Power Tilt
135	E135FSLSDE	2006	60° V-6/158.1 cu in	20"	White	Remote	Electric	Power Tilt
140	J140PL4SOR	2005	4 Cyl. / 124.6 cu in	20"	White	Remote	Electric	Power Tilt
140	BJ140L4SOC	2005	4 Cyl. / 124.6 cu in	20"	White	Remote	Electric	Power Tilt
140	J140PX4SOR	2005	4 Cyl. / 124.6 cu in	25"	White	Remote	Electric	Power Tilt
140	BJ140X4SOC	2005	4 Cyl. / 124.6 cu in	25"	White	Remote	Electric	Power Tilt
140	J140CX4SOR	2005	4 Cyl. / 124.6 cu in	25"	White	Remote	Electric	Power Tilt
140	BJ140CX4OC	2005	4 Cyl. / 124.6 cu in	25"	White	Remote	Electric	Power Tilt
140	J140PL4SDA	2006	4 Cyl. / 124.6 cu in	20"	White	Remote	Electric	Power Tilt
140	J140PL4SDG	2006	4 Cyl. / 124.6 cu in	20"	White	Remote	Electric	Power Tilt
140	BJ140L4SDR	2006	4 Cyl. / 124.6 cu in	20"	White	Remote	Electric	Power Tilt
140	BJ140L4SDG	2006	4 Cyl. / 124.6 cu in	20"	White	Remote	Electric	Power Tilt
140	J140PX4SDA	2006	4 Cyl. / 124.6 cu in	25"	White	Remote	Electric	Power Tilt
140	J140PX4SDG	2006	4 Cyl. / 124.6 cu in	25"	White	Remote	Electric	Power Tilt
140	BJ140X4SDR	2006	4 Cyl. / 124.6 cu in	25"	White	Remote	Electric	Power Tilt
140	BJ140X4SDG	2006	4 Cyl. / 124.6 cu in	25"	White	Remote	Electric	Power Tilt
140	J140CX4SDA	2006	4 Cyl. / 124.6 cu in	25"	White	Remote	Electric	Power Tilt
140	J140CX4SDG	2006	4 Cyl. / 124.6 cu in	25"	White	Remote	Electric	Power Tilt
140	BJ140CX4DR	2006	4 Cyl. / 124.6 cu in	25"	White	Remote	Electric	Power Tilt
140	BJ140CX4DG	2006	4 Cyl. / 124.6 cu in	25"	White	Remote	Electric	Power Tilt
150	E150DPLINE	2012	60° V-6/158.2 cu in	20"	Blue	Remote	Electric	Power Tilt
150	E150DPXINE	2012	60° V-6/158.2 cu in	25"	White	Remote	Electric	Power Tilt
150	E150DBXINE	2012	60° V-6/158.2 cu in	25"	Blue	Remote	Electric	Power Tilt
150	E150DHLINE	2012	60° V-6/158.2 cu in	20"	Blue	Remote	Electric	Power Tilt
150	E150HSLINM	2012	60° V-6/158.2 cu in	20"	White	Remote	Electric	Power Tilt
150	E150DCXINE	2012	60° V-6/158.2 cu in	25"	White	Remote	Electric	Power Tilt
150	E150DPLIIB	2011	60° V-6/158.2 cu in	20"	Blue	Remote	Electric	Power Tilt
150	E150DPXIIB	2011	60° V-6/158.2 cu in	25"	White	Remote	Electric	Power Tilt
150	E150DBXIIB	2011	60° V-6/158.2 cu in	25"	Blue	Remote	Electric	Power Tilt
150	E150DSLIIIB	2011	60° V-6/158.2 cu in	20"	White	Remote	Electric	Power Tilt
150	E150DHLIIB	2011	60° V-6/158.2 cu in	20"	Blue	Remote	Electric	Power Tilt
150	E150HSLIIB	2011	60° V-6/158.2 cu in	20"	White	Remote	Electric	Power Tilt
150	E150DCXIIB	2011	60° V-6/158.2 cu in	25"	White	Remote	Electric	Power Tilt
150	E150DPLISM	2010	60° V-6/158.2 cu in	20"	Blue	Remote	Electric	Power Tilt
150	E150DPLISF	2010	60° V-6/158.2 cu in	20"	Blue	Remote	Electric	Power Tilt
150	E150DPXISM	2010	60° V-6/158.2 cu in	25"	White	Remote	Electric	Power Tilt
150	E150DSLISM	2012	60° V-6/158.2 cu in	20"	White	Remote	Electric	Power Tilt

Evinrude and Johnson Outboards 2005 - 2012

Horsepower	Model Number	Model Year	Engine	Shaft Length	Color	Steering	Starting	Midsection
150	E150DPXISF	2010	60° V-6/158.2 cu in	25"	White	Remote	Electric	Power Tilt
150	E150DBXISM	2010	60° V-6/158.2 cu in	25"	Blue	Remote	Electric	Power Tilt
150	E150DBXISF	2010	60° V-6/158.2 cu in	25"	Blue	Remote	Electric	Power Tilt
150	E150DSLISM	2010	60° V-6/158.2 cu in	20"	White	Remote	Electric	Power Tilt
150	E150DSLISF	2010	60° V-6/158.2 cu in	20"	White	Remote	Electric	Power Tilt
150	E150DHLISM	2010	60° V-6/158.2 cu in	20"	Blue	Remote	Electric	Power Tilt
150	E150DHLISF	2010	60° V-6/158.2 cu in	20"	Blue	Remote	Electric	Power Tilt
150	E150HSLISR	2010	60° V-6/158.2 cu in	20"	White	Remote	Electric	Power Tilt
150	E150HSLISF	2010	60° V-6/158.2 cu in	20"	White	Remote	Electric	Power Tilt
150	E150DCXISM	2010	60° V-6/158.2 cu in	25"	White	Remote	Electric	Power Tilt
150	E150DCXISF	2010	60° V-6/158.2 cu in	25"	White	Remote	Electric	Power Tilt
150	E150DPLSEA	2009	60° V-6/158.2 cu in	20"	Blue	Remote	Electric	Power Tilt
150	E150DPXSEA	2009	60° V-6/158.2 cu in	25"	White	Remote	Electric	Power Tilt
150	E150HGXSSES	2009	60° V-6/158.2 cu in	25"	Smoke	Remote	Electric	Power Tilt
150	E150DBXSEA	2009	60° V-6/158.2 cu in	25"	Blue	Remote	Electric	Power Tilt
150	E150DSLSEA	2009	60° V-6/158.2 cu in	20"	White	Remote	Electric	Power Tilt
150	E150DHLSEA	2009	60° V-6/158.2 cu in	20"	Blue	Remote	Electric	Power Tilt
150	E150HGLSES	2009	60° V-6/158.2 cu in	20"	Smoke	Remote	Electric	Power Tilt
150	E150HSLSEC	2009	60° V-6/158.2 cu in	20"	White	Remote	Electric	Power Tilt
150	E150DCXSEA	2009	60° V-6/158.2 cu in	25"	White	Remote	Electric	Power Tilt
150	E150DPLSCR	2008	60° V-6/158.2 cu in	20"	Blue	Remote	Electric	Power Tilt
150	E150DPXSCR	2008	60° V-6/158.2 cu in	25"	White	Remote	Electric	Power Tilt
150	E150DPXSCF	2008	60° V-6/158.2 cu in	25"	White	Remote	Electric	Power Tilt
150	E150DBXSCR	2008	60° V-6/158.2 cu in	25"	Blue	Remote	Electric	Power Tilt
150	E150DBXSCF	2008	60° V-6/158.2 cu in	25"	Blue	Remote	Electric	Power Tilt
150	E150DSLSCR	2008	60° V-6/158.2 cu in	20"	White	Remote	Electric	Power Tilt
150	E150DHLSCR	2008	60° V-6/158.2 cu in	20"	Blue	Remote	Electric	Power Tilt
150	E150DHLSCF	2008	60° V-6/158.2 cu in	20"	Blue	Remote	Electric	Power Tilt
150	E150HSLSCS	2008	60° V-6/158.2 cu in	20"	White	Remote	Electric	Power Tilt
150	E150HSLSCF	2008	60° V-6/158.2 cu in	20"	White	Remote	Electric	Power Tilt
150	E150DCXSCR	2008	60° V-6/158.2 cu in	25"	White	Remote	Electric	Power Tilt
150	E150DCXSCF	2008	60° V-6/158.2 cu in	25"	White	Remote	Electric	Power Tilt
150	E150DPLSUC	2007	60° V-6/158.2 cu in	20"	Blue	Remote	Electric	Power Tilt
150	E150DPLSUF	2007	60° V-6/158.2 cu in	20"	Blue	Remote	Electric	Power Tilt
150	E150DPXSUC	2007	60° V-6/158.2 cu in	25"	White	Remote	Electric	Power Tilt
150	E150DPXSUF	2007	60° V-6/158.2 cu in	25"	White	Remote	Electric	Power Tilt
150	E150DBXSUF	2007	60° V-6/158.2 cu in	25"	Blue	Remote	Electric	Power Tilt
150	E150DSLXUC	2007	60° V-6/158.2 cu in	20"	White	Remote	Electric	Power Tilt
150	E150DSLXUF	2007	60° V-6/158.2 cu in	20"	White	Remote	Electric	Power Tilt
150	E150DHLXUC	2007	60° V-6/158.2 cu in	20"	Blue	Remote	Electric	Power Tilt
150	E150DHLXUF	2007	60° V-6/158.2 cu in	20"	Blue	Remote	Electric	Power Tilt
150	E150DCXSUC	2007	60° V-6/158.2 cu in	25"	White	Remote	Electric	Power Tilt
150	E150DCXSUF	2007	60° V-6/158.2 cu in	25"	White	Remote	Electric	Power Tilt
150	E150FPLSDR	2006	60° V-6/158.1 cu in	20"	Blue	Remote	Electric	Power Tilt
150	E150FPXSDR	2006	60° V-6/158.1 cu in	25"	White	Remote	Electric	Power Tilt
150	E150FCXSDR	2006	60° V-6/158.1 cu in	25"	White	Remote	Electric	Power Tilt
150	E150FSLSDR	2006	60° V-6/158.1 cu in	20"	White	Remote	Electric	Power Tilt
150	E150FHLSDR	2006	60° V-6/158.1 cu in	20"	Blue	Remote	Electric	Power Tilt
150	J150PLSDD	2006	60° V-6/158.1 cu in	20"	White	Remote	Electric	Power Tilt
150	J150PXSD	2006	60° V-6/158.1 cu in	25"	White	Remote	Electric	Power Tilt
150	J150CXSD	2006	60° V-6/158.1 cu in	25"	White	Remote	Electric	Power Tilt
150	J150GLSDE	2006	60° V-6/158.1 cu in	20"	Smoke	Remote	Electric	Power Tilt
150	J150PLSOE	2005	60° V-6/158.1 cu in	20"	White	Remote	Electric	Power Tilt
150	J150PXSOE	2005	60° V-6/158.1 cu in	25"	White	Remote	Electric	Power Tilt
150	J150CXSOB	2005	60° V-6/158.1 cu in	25"	White	Remote	Electric	Power Tilt
150	J150GLSOB	2005	60° V-6/158.1 cu in	20"	Smoke	Remote	Electric	Power Tilt
150	J150MLSOR	2005	60° V-6/158.1 cu in	20"	Green	Remote	Electric	Power Tilt
150	J150MXSOR	2005	60° V-6/158.1 cu in	25"	Green	Remote	Electric	Power Tilt
150	E150FPLSOC	2005	60° V-6/158.1 cu in	20"	Blue	Remote	Electric	Power Tilt
150	E150FPXSOC	2005	60° V-6/158.1 cu in	25"	White	Remote	Electric	Power Tilt
150	E150FCXSOC	2005	60° V-6/158.1 cu in	25"	White	Remote	Electric	Power Tilt
150	E150FSLSOC	2005	60° V-6/158.1 cu in	20"	White	Remote	Electric	Power Tilt
150	E150FHLSOC	2005	60° V-6/158.1 cu in	20"	Blue	Remote	Electric	Power Tilt
175	E175DPLINE	2012	60° V-6/158.2 cu in	20"	Blue	Remote	Electric	Power Tilt
175	E175DPXINE	2012	60° V-6/158.2 cu in	25"	White	Remote	Electric	Power Tilt
175	E175DMXINM	2012	60° V-6/158.2 cu in	25"	Green	Remote	Electric	Power Tilt
175	E175DSLIN	2012	60° V-6/158.2 cu in	20"	White	Remote	Electric	Power Tilt
175	E175DCXINE	2012	60° V-6/158.2 cu in	25"	White	Remote	Electric	Power Tilt
175	E175DPLIIB	2011	60° V-6/158.2 cu in	20"	Blue	Remote	Electric	Power Tilt
175	E175DPXIIB	2011	60° V-6/158.2 cu in	25"	White	Remote	Electric	Power Tilt

Evinrude and Johnson Outboards 2005 - 2012

Horsepower	Model Number	Model Year	Engine	Shaft Length	Color	Steering	Starting	Midsection
175	E175DMXIIA	2011	60° V-6/158.2 cu in	25"	Green	Remote	Electric	Power Tilt
175	E175DSLIIIB	2011	60° V-6/158.2 cu in	20"	White	Remote	Electric	Power Tilt
175	E175DCXIIB	2011	60° V-6/158.2 cu in	25"	White	Remote	Electric	Power Tilt
175	E175DPLISM	2010	60° V-6/158.2 cu in	20"	Blue	Remote	Electric	Power Tilt
175	E175DPLISF	2010	60° V-6/158.2 cu in	20"	Blue	Remote	Electric	Power Tilt
175	E175DPXISM	2010	60° V-6/158.2 cu in	25"	White	Remote	Electric	Power Tilt
175	E175DPXISF	2010	60° V-6/158.2 cu in	25"	White	Remote	Electric	Power Tilt
175	E175DMXISR	2010	60° V-6/158.2 cu in	25"	Green	Remote	Electric	Power Tilt
175	E175DMXISF	2010	60° V-6/158.2 cu in	25"	Green	Remote	Electric	Power Tilt
175	E175DSLISM	2010	60° V-6/158.2 cu in	20"	White	Remote	Electric	Power Tilt
175	E175DSLISF	2010	60° V-6/158.2 cu in	20"	White	Remote	Electric	Power Tilt
175	E175DCXISM	2010	60° V-6/158.2 cu in	25"	White	Remote	Electric	Power Tilt
175	E175DCXISF	2010	60° V-6/158.2 cu in	25"	White	Remote	Electric	Power Tilt
175	E175DPLSEA	2009	60° V-6/158.2 cu in	20"	Blue	Remote	Electric	Power Tilt
175	E175DPXSEA	2009	60° V-6/158.2 cu in	25"	White	Remote	Electric	Power Tilt
175	E175DMXSEC	2009	60° V-6/158.2 cu in	25"	Green	Remote	Electric	Power Tilt
175	E175DSLSEA	2009	60° V-6/158.2 cu in	20"	White	Remote	Electric	Power Tilt
175	E175DCXSEA	2009	60° V-6/158.2 cu in	25"	White	Remote	Electric	Power Tilt
175	E175DPLSCR	2008	60° V-6/158.2 cu in	20"	Blue	Remote	Electric	Power Tilt
175	E175DPXSCR	2008	60° V-6/158.2 cu in	25"	White	Remote	Electric	Power Tilt
175	E175DPXSCF	2008	60° V-6/158.2 cu in	25"	White	Remote	Electric	Power Tilt
175	E175DMXSCS	2008	60° V-6/158.2 cu in	25"	Green	Remote	Electric	Power Tilt
175	E175DMXSCF	2008	60° V-6/158.2 cu in	25"	Green	Remote	Electric	Power Tilt
175	E175DSLSCR	2008	60° V-6/158.2 cu in	20"	White	Remote	Electric	Power Tilt
175	E175DCXSCR	2008	60° V-6/158.2 cu in	25"	White	Remote	Electric	Power Tilt
175	E175DCXSCF	2008	60° V-6/158.2 cu in	25"	White	Remote	Electric	Power Tilt
175	E175DPLSUF	2007	60° V-6/158.2 cu in	20"	Blue	Remote	Electric	Power Tilt
175	E175DPXSUF	2007	60° V-6/158.2 cu in	25"	White	Remote	Electric	Power Tilt
175	E175DSLXUF	2007	60° V-6/158.2 cu in	20"	White	Remote	Electric	Power Tilt
175	E175DCXSUF	2007	60° V-6/158.2 cu in	25"	White	Remote	Electric	Power Tilt
175	J175PLSDD	2006	60° V-6/158.1 cu in	20"	White	Remote	Electric	Power Tilt
175	J175PXSD	2006	60° V-6/158.1 cu in	25"	White	Remote	Electric	Power Tilt
175	J175CXSD	2006	60° V-6/158.1 cu in	25"	White	Remote	Electric	Power Tilt
175	J175GLSDE	2006	60° V-6/158.1 cu in	20"	Smoke	Remote	Electric	Power Tilt
175	E175FPLSDS	2006	60° V-6/158.1 cu in	20"	Blue	Remote	Electric	Power Tilt
175	E175FPXSDS	2006	60° V-6/158.1 cu in	25"	White	Remote	Electric	Power Tilt
175	E175FCXSDS	2006	60° V-6/158.1 cu in	25"	White	Remote	Electric	Power Tilt
175	E175FSLSD	2006	60° V-6/158.1 cu in	20"	White	Remote	Electric	Power Tilt
175	J175PLSOE	2005	60° V-6/158.1 cu in	20"	White	Remote	Electric	Power Tilt
175	J175PXSOE	2005	60° V-6/158.1 cu in	25"	White	Remote	Electric	Power Tilt
175	J175CXSOB	2005	60° V-6/158.1 cu in	25"	White	Remote	Electric	Power Tilt
175	J175GLSOB	2005	60° V-6/158.1 cu in	20"	Smoke	Remote	Electric	Power Tilt
175	J175MXSOR	2005	60° V-6/158.1 cu in	25"	Green	Remote	Electric	Power Tilt
175	E175FPLSOD	2005	60° V-6/158.1 cu in	20"	Blue	Remote	Electric	Power Tilt
175	E175FPXSOD	2005	60° V-6/158.1 cu in	25"	White	Remote	Electric	Power Tilt
175	E175MFXSOS	2005	60° V-6/158.1 cu in	25"	Green	Remote	Electric	Power Tilt
175	E175FCXSOD	2005	60° V-6/158.1 cu in	25"	White	Remote	Electric	Power Tilt
175	E175FSLSOE	2005	60° V-6/158.1 cu in	20"	White	Remote	Electric	Power Tilt
200	E200DPLIND	2012	60° V-6/158.2 cu in	20"	Blue	Remote	Electric	Power Tilt
200	E200DPXIND	2012	60° V-6/158.2 cu in	25"	White	Remote	Electric	Power Tilt
200	E200DSLIND	2012	60° V-6/158.2 cu in	20"	White	Remote	Electric	Power Tilt
200	E200DCXIND	2012	60° V-6/158.2 cu in	25"	White	Remote	Electric	Power Tilt
200	E200HSLINE	2012	90° V-6/200.1 cu in	20"	White	Remote	Electric	Power Tilt
200	E200HVLINM	2012	90° V-6/200.1 cu in	20"	White	Remote	Electric	Power Tilt
200	E200DHLINS	2012	90° V-6/200.1 cu in	20"	Blue	Remote	Electric	Power Tilt
200	E200DHXINE	2012	90° V-6/200.1 cu in	25"	White	Remote	Electric	Power Tilt
200	E200HCXINE	2012	90° V-6/200.1 cu in	25"	White	Remote	Electric	Power Tilt
200	E200DPLIIE	2011	60° V-6/158.2 cu in	20"	Blue	Remote	Electric	Power Tilt
200	E200DPXIIE	2011	60° V-6/158.2 cu in	25"	White	Remote	Electric	Power Tilt
200	E200DSLIIIE	2011	60° V-6/158.2 cu in	20"	White	Remote	Electric	Power Tilt
200	E200DCXIIE	2011	60° V-6/158.2 cu in	25"	White	Remote	Electric	Power Tilt
200	E200HSLIIB	2011	90° V-6/200.1 cu in	20"	White	Remote	Electric	Power Tilt
200	E200HVLIIA	2011	90° V-6/200.1 cu in	20"	White	Remote	Electric	Power Tilt
200	E200DHLIID	2011	90° V-6/200.1 cu in	20"	Blue	Remote	Electric	Power Tilt
200	E200DHXIIB	2011	90° V-6/200.1 cu in	25"	White	Remote	Electric	Power Tilt
200	E200HCXIIB	2011	90° V-6/200.1 cu in	25"	White	Remote	Electric	Power Tilt
200	E200DPLISB	2010	60° V-6/158.2 cu in	20"	Blue	Remote	Electric	Power Tilt
200	E200DPLISF	2010	60° V-6/158.2 cu in	20"	Blue	Remote	Electric	Power Tilt
200	E200DPXISB	2010	60° V-6/158.2 cu in	25"	White	Remote	Electric	Power Tilt
200	E200DPXISF	2010	60° V-6/158.2 cu in	25"	White	Remote	Electric	Power Tilt

Evinrude and Johnson Outboards 2005 - 2012

Horsepower	Model Number	Model Year	Engine	Shaft Length	Color	Steering	Starting	Midsection
200	E200DSLISB	2010	60° V-6/158.2 cu in	20"	White	Remote	Electric	Power Tilt
200	E200DSLISF	2010	60° V-6/158.2 cu in	20"	White	Remote	Electric	Power Tilt
200	E200DCXISB	2010	60° V-6/158.2 cu in	25"	White	Remote	Electric	Power Tilt
200	E200DCXISF	2010	60° V-6/158.2 cu in	25"	White	Remote	Electric	Power Tilt
200	E200HSLISM	2010	90° V-6/200.1 cu in	20"	White	Remote	Electric	Power Tilt
200	E200HSLISF	2010	90° V-6/200.1 cu in	20"	White	Remote	Electric	Power Tilt
200	E200HVLISR	2010	90° V-6/200.1 cu in	20"	White	Remote	Electric	Power Tilt
200	E200HVLISF	2010	90° V-6/200.1 cu in	20"	White	Remote	Electric	Power Tilt
200	E200DHLISE	2010	90° V-6/200.1 cu in	20"	Blue	Remote	Electric	Power Tilt
200	E200DHLISF	2010	90° V-6/200.1 cu in	20"	Blue	Remote	Electric	Power Tilt
200	E200DHXISM	2010	90° V-6/200.1 cu in	25"	White	Remote	Electric	Power Tilt
200	E200DHXISF	2010	90° V-6/200.1 cu in	25"	White	Remote	Electric	Power Tilt
200	E200HCXISM	2010	90° V-6/200.1 cu in	25"	White	Remote	Electric	Power Tilt
200	E200HCXISF	2010	90° V-6/200.1 cu in	25"	White	Remote	Electric	Power Tilt
200	E200DPLSEM	2009	60° V-6/158.2 cu in	20"	Blue	Remote	Electric	Power Tilt
200	E200DPXSEM	2009	60° V-6/158.2 cu in	25"	White	Remote	Electric	Power Tilt
200	E200DSLSEM	2009	60° V-6/158.2 cu in	20"	White	Remote	Electric	Power Tilt
200	E200DCXSEM	2009	60° V-6/158.2 cu in	25"	White	Remote	Electric	Power Tilt
200	E200HSLSEA	2009	90° V-6/200.1 cu in	20"	White	Remote	Electric	Power Tilt
200	E200HVLSEC	2009	90° V-6/200.1 cu in	20"	White	Remote	Electric	Power Tilt
200	E200DHLSEB	2009	90° V-6/200.1 cu in	20"	Blue	Remote	Electric	Power Tilt
200	E200DHXSEA	2009	90° V-6/200.1 cu in	25"	White	Remote	Electric	Power Tilt
200	E200HCXSEA	2009	90° V-6/200.1 cu in	25"	White	Remote	Electric	Power Tilt
200	E200DPLSCA	2008	60° V-6/158.2 cu in	20"	Blue	Remote	Electric	Power Tilt
200	E200DPXSCA	2008	60° V-6/158.2 cu in	25"	White	Remote	Electric	Power Tilt
200	E200DPXSCF	2008	60° V-6/158.2 cu in	25"	White	Remote	Electric	Power Tilt
200	E200DSLSCA	2008	60° V-6/158.2 cu in	20"	White	Remote	Electric	Power Tilt
200	E200DCXSCA	2008	60° V-6/158.2 cu in	25"	White	Remote	Electric	Power Tilt
200	E200DCXSCF	2008	60° V-6/158.2 cu in	25"	White	Remote	Electric	Power Tilt
200	E200HSLSCR	2008	90° V-6/200.1 cu in	20"	White	Remote	Electric	Power Tilt
200	E200HSLSCF	2008	90° V-6/200.1 cu in	20"	White	Remote	Electric	Power Tilt
200	E200HSLSCG	2008	90° V-6/200.1 cu in	20"	White	Remote	Electric	Power Tilt
200	E200HLSLCH	2008	90° V-6/200.1 cu in	20"	White	Remote	Electric	Power Tilt
200	E200HVLSCS	2008	90° V-6/200.1 cu in	20"	White	Remote	Electric	Power Tilt
200	E200HVLSCF	2008	90° V-6/200.1 cu in	20"	White	Remote	Electric	Power Tilt
200	E200HVLSCG	2008	90° V-6/200.1 cu in	20"	White	Remote	Electric	Power Tilt
200	E200HVLSCH	2008	90° V-6/200.1 cu in	20"	White	Remote	Electric	Power Tilt
200	E200DHLSCM	2008	90° V-6/200.1 cu in	20"	Blue	Remote	Electric	Power Tilt
200	E200DHLSCF	2008	90° V-6/200.1 cu in	20"	Blue	Remote	Electric	Power Tilt
200	E200DHLSCG	2008	90° V-6/200.1 cu in	20"	Blue	Remote	Electric	Power Tilt
200	E200DHLSCH	2008	90° V-6/200.1 cu in	20"	Blue	Remote	Electric	Power Tilt
200	E200DHXSCR	2008	90° V-6/200.1 cu in	25"	White	Remote	Electric	Power Tilt
200	E200DHXSCF	2008	90° V-6/200.1 cu in	25"	White	Remote	Electric	Power Tilt
200	E200DHXSCG	2008	90° V-6/200.1 cu in	25"	White	Remote	Electric	Power Tilt
200	E200DHXSCH	2008	90° V-6/200.1 cu in	25"	White	Remote	Electric	Power Tilt
200	E200HCXSCR	2008	90° V-6/200.1 cu in	25"	White	Remote	Electric	Power Tilt
200	E200HCXSCF	2008	90° V-6/200.1 cu in	25"	White	Remote	Electric	Power Tilt
200	E200HCXSCG	2008	90° V-6/200.1 cu in	25"	White	Remote	Electric	Power Tilt
200	E200HCXSCH	2008	90° V-6/200.1 cu in	25"	White	Remote	Electric	Power Tilt
200	E200DPLSUR	2007	60° V-6/158.2 cu in	20"	Blue	Remote	Electric	Power Tilt
200	E200DPLSUF	2007	60° V-6/158.2 cu in	20"	Blue	Remote	Electric	Power Tilt
200	E200DPXSUR	2007	60° V-6/158.2 cu in	25"	White	Remote	Electric	Power Tilt
200	E200DPXSUF	2007	60° V-6/158.2 cu in	25"	White	Remote	Electric	Power Tilt
200	E200DSL SUR	2007	60° V-6/158.2 cu in	20"	White	Remote	Electric	Power Tilt
200	E200DSL SUF	2007	60° V-6/158.2 cu in	20"	White	Remote	Electric	Power Tilt
200	E200DCXSUR	2007	60° V-6/158.2 cu in	25"	White	Remote	Electric	Power Tilt
200	E200DCXSUF	2007	60° V-6/158.2 cu in	25"	White	Remote	Electric	Power Tilt
200	E200HLSLUC	2007	90° V-6/200.1 cu in	20"	White	Remote	Electric	Power Tilt
200	E200DHL SUG	2007	90° V-6/200.1 cu in	20"	Blue	Remote	Electric	Power Tilt
200	E200DHL SUA	2007	90° V-6/200.1 cu in	20"	Blue	Remote	Electric	Power Tilt
200	E200DHL SUC	2007	90° V-6/200.1 cu in	25"	White	Remote	Electric	Power Tilt
200	E200HCX SUC	2007	90° V-6/200.1 cu in	25"	White	Remote	Electric	Power Tilt
200	E200HLS SDS	2006	90° V-6/200.1 cu in	20"	White	Remote	Electric	Power Tilt
200	E200DHL SDF	2006	90° V-6/200.1 cu in	20"	Blue	Remote	Electric	Power Tilt
200	E200DHL SDS	2006	90° V-6/200.1 cu in	25"	White	Remote	Electric	Power Tilt
200	E200HCX SDS	2006	90° V-6/200.1 cu in	25"	White	Remote	Electric	Power Tilt
200	E200MDX SDS	2006	90° V-6/200.1 cu in	25"	Black	Remote	Electric	Power Tilt
200	E200MCX SDS	2006	90° V-6/200.1 cu in	25"	Black	Remote	Electric	Power Tilt
200	J200PX4SDR	2006	6 Cyl. / 220.0 cu in	25"	White	Remote	Electric	Power Tilt
200	BJ200X4SDC	2006	6 Cyl. / 220.0 cu in	25"	White	Remote	Electric	Power Tilt

Evinrude and Johnson Outboards 2005 - 2012

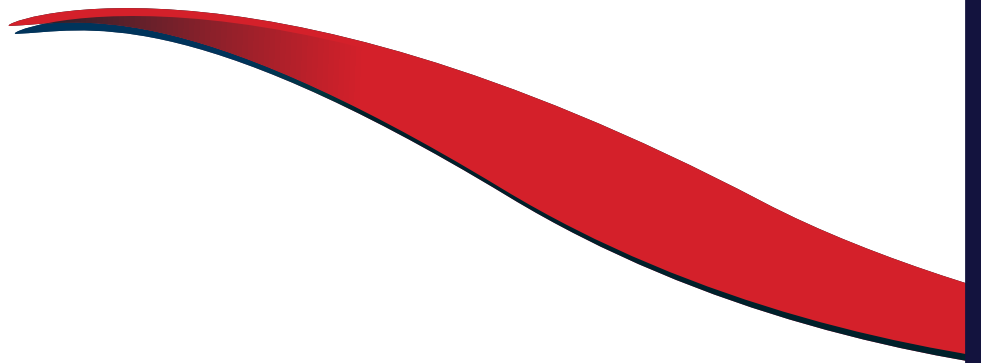
Horsepower	Model Number	Model Year	Engine	Shaft Length	Color	Steering	Starting	Midsection
200	J200CX4SDR	2006	6 Cyl. / 220.0 cu in	25"	White	Remote	Electric	Power Tilt
200	BJ200CX4DC	2006	6 Cyl. / 220.0 cu in	25"	White	Remote	Electric	Power Tilt
200	J200PX4SOC	2005	6 Cyl. / 220.0 cu in	25"	White	Remote	Electric	Power Tilt
200	BJ200X4SOS	2005	6 Cyl. / 220.0 cu in	25"	White	Remote	Electric	Power Tilt
200	J200CX4SOC	2005	6 Cyl. / 220.0 cu in	25"	White	Remote	Electric	Power Tilt
200	BJ200CX4OS	2005	6 Cyl. / 220.0 cu in	25"	White	Remote	Electric	Power Tilt
200	E200DPLSOC	2005	90° V-6/200.1 cu in	20"	Blue	Remote	Electric	Power Tilt
200	E200DPXSOC	2005	90° V-6/200.1 cu in	25"	White	Remote	Electric	Power Tilt
200	E200DCXSOC	2005	90° V-6/200.1 cu in	25"	White	Remote	Electric	Power Tilt
200	E200DLSLOC	2005	90° V-6/200.1 cu in	20"	White	Remote	Electric	Power Tilt
200	E200DHLSOC	2005	90° V-6/200.1 cu in	20"	Blue	Remote	Electric	Power Tilt
200	E200DHL SOG	2005	90° V-6/200.1 cu in	20"	Blue	Remote	Electric	Power Tilt
225	E225DPLINS	2012	90° V-6/200.1 cu in	20"	Blue	Remote	Electric	Power Tilt
225	E225DPXINS	2012	90° V-6/200.1 cu in	25"	White	Remote	Electric	Power Tilt
225	E225DPZINS	2012	90° V-6/200.1 cu in	30"	White	Remote	Electric	Power Tilt
225	E225DCXINS	2012	90° V-6/200.1 cu in	25"	White	Remote	Electric	Power Tilt
225	E225DCZINS	2012	90° V-6/200.1 cu in	30"	White	Remote	Electric	Power Tilt
225	E225DHLINS	2012	90° V-6/200.1 cu in	20"	Blue	Remote	Electric	Power Tilt
225	E225HSLINM	2012	90° V-6/200.1 cu in	20"	White	Remote	Electric	Power Tilt
225	E225DHXIND	2012	90° V-6/200.1 cu in	25"	Blue	Remote	Electric	Power Tilt
250	E250DPLINS	2012	90° V-6/200.1 cu in	20"	Blue	Remote	Electric	Power Tilt
225	E225DPLIID	2011	90° V-6/200.1 cu in	20"	Blue	Remote	Electric	Power Tilt
225	E225DPXIID	2011	90° V-6/200.1 cu in	25"	White	Remote	Electric	Power Tilt
225	E225DPZIID	2011	90° V-6/200.1 cu in	30"	White	Remote	Electric	Power Tilt
225	E225DCXIID	2011	90° V-6/200.1 cu in	25"	White	Remote	Electric	Power Tilt
225	E225DCZIID	2011	90° V-6/200.1 cu in	30"	White	Remote	Electric	Power Tilt
225	E225DHLIID	2011	90° V-6/200.1 cu in	20"	Blue	Remote	Electric	Power Tilt
225	E225HSLIIA	2011	90° V-6/200.1 cu in	20"	White	Remote	Electric	Power Tilt
225	E225DHXIIE	2011	90° V-6/200.1 cu in	25"	Blue	Remote	Electric	Power Tilt
225	E225DPLISE	2010	90° V-6/200.1 cu in	20"	Blue	Remote	Electric	Power Tilt
225	E225DPLISF	2010	90° V-6/200.1 cu in	20"	Blue	Remote	Electric	Power Tilt
225	E225DPXISE	2010	90° V-6/200.1 cu in	25"	White	Remote	Electric	Power Tilt
225	E225DPXISF	2010	90° V-6/200.1 cu in	25"	White	Remote	Electric	Power Tilt
225	E225DPZISE	2010	90° V-6/200.1 cu in	30"	White	Remote	Electric	Power Tilt
225	E225DPZISF	2010	90° V-6/200.1 cu in	30"	White	Remote	Electric	Power Tilt
225	E225DCXISE	2010	90° V-6/200.1 cu in	25"	White	Remote	Electric	Power Tilt
225	E225DCXISF	2010	90° V-6/200.1 cu in	25"	White	Remote	Electric	Power Tilt
225	E225DCZISE	2010	90° V-6/200.1 cu in	30"	White	Remote	Electric	Power Tilt
225	E225DCZISF	2010	90° V-6/200.1 cu in	30"	White	Remote	Electric	Power Tilt
225	E225DHLISE	2010	90° V-6/200.1 cu in	20"	Blue	Remote	Electric	Power Tilt
225	E225DHLISF	2010	90° V-6/200.1 cu in	20"	Blue	Remote	Electric	Power Tilt
225	E225HSLISR	2010	90° V-6/200.1 cu in	20"	White	Remote	Electric	Power Tilt
225	E225HSLISF	2010	90° V-6/200.1 cu in	20"	White	Remote	Electric	Power Tilt
225	E225DHXISB	2010	90° V-6/200.1 cu in	25"	Blue	Remote	Electric	Power Tilt
225	E225DHXISF	2010	90° V-6/200.1 cu in	25"	Blue	Remote	Electric	Power Tilt
225	E225DPLSEB	2009	90° V-6/200.1 cu in	20"	Blue	Remote	Electric	Power Tilt
225	E225DPXSEB	2009	90° V-6/200.1 cu in	25"	White	Remote	Electric	Power Tilt
225	E225DPZSEB	2009	90° V-6/200.1 cu in	30"	White	Remote	Electric	Power Tilt
225	E225DCXSEB	2009	90° V-6/200.1 cu in	25"	White	Remote	Electric	Power Tilt
225	E225DCZSEB	2009	90° V-6/200.1 cu in	30"	White	Remote	Electric	Power Tilt
225	E225DHLSEB	2009	90° V-6/200.1 cu in	20"	Blue	Remote	Electric	Power Tilt
225	E225HSLSEC	2009	90° V-6/200.1 cu in	20"	White	Remote	Electric	Power Tilt
225	E225DHXSEM	2009	90° V-6/200.1 cu in	25"	Blue	Remote	Electric	Power Tilt
225	E225DPLSCG	2008	90° V-6/200.1 cu in	20"	Blue	Remote	Electric	Power Tilt
225	E225DPLSCH	2008	90° V-6/200.1 cu in	20"	Blue	Remote	Electric	Power Tilt
225	E225DPXSCM	2008	90° V-6/200.1 cu in	25"	White	Remote	Electric	Power Tilt
225	E225DPXSCF	2008	90° V-6/200.1 cu in	25"	White	Remote	Electric	Power Tilt
225	E225DPXSCG	2008	90° V-6/200.1 cu in	25"	White	Remote	Electric	Power Tilt
225	E225DPXSCH	2008	90° V-6/200.1 cu in	25"	White	Remote	Electric	Power Tilt
225	E225DPZSCM	2008	90° V-6/200.1 cu in	30"	White	Remote	Electric	Power Tilt
225	E225DPZSCF	2008	90° V-6/200.1 cu in	30"	White	Remote	Electric	Power Tilt
225	E225DPZSCG	2008	90° V-6/200.1 cu in	30"	White	Remote	Electric	Power Tilt
225	E225DPZSCH	2008	90° V-6/200.1 cu in	30"	White	Remote	Electric	Power Tilt
225	E225DCXSCM	2008	90° V-6/200.1 cu in	25"	White	Remote	Electric	Power Tilt
225	E225DCXSCF	2008	90° V-6/200.1 cu in	25"	White	Remote	Electric	Power Tilt
225	E225DCXSCG	2008	90° V-6/200.1 cu in	25"	White	Remote	Electric	Power Tilt
225	E225DCZSCM	2008	90° V-6/200.1 cu in	30"	White	Remote	Electric	Power Tilt
225	E225DCZSCF	2008	90° V-6/200.1 cu in	30"	White	Remote	Electric	Power Tilt
225	E225DCZSCG	2008	90° V-6/200.1 cu in	30"	White	Remote	Electric	Power Tilt
225	E225DCXSCH	2008	90° V-6/200.1 cu in	25"	White	Remote	Electric	Power Tilt

Evinrude and Johnson Outboards 2005 - 2012

Horsepower	Model Number	Model Year	Engine	Shaft Length	Color	Steering	Starting	Midsection
225	E225DCZSCH	2008	90° V-6/200.1 cu in	30"	White	Remote	Electric	Power Tilt
225	E225DHLSCM	2008	90° V-6/200.1 cu in	20"	Blue	Remote	Electric	Power Tilt
225	E225DHLSCF	2008	90° V-6/200.1 cu in	20"	Blue	Remote	Electric	Power Tilt
225	E225DHLSCG	2008	90° V-6/200.1 cu in	20"	Blue	Remote	Electric	Power Tilt
225	E225DHLSCH	2008	90° V-6/200.1 cu in	20"	Blue	Remote	Electric	Power Tilt
225	E225HSLSCS	2008	90° V-6/200.1 cu in	20"	White	Remote	Electric	Power Tilt
225	E225HSLSCF	2008	90° V-6/200.1 cu in	20"	White	Remote	Electric	Power Tilt
225	E225HSLSCG	2008	90° V-6/200.1 cu in	20"	White	Remote	Electric	Power Tilt
225	E225HSLSCH	2008	90° V-6/200.1 cu in	20"	White	Remote	Electric	Power Tilt
225	E225DHXSCH	2008	90° V-6/200.1 cu in	25"	Blue	Remote	Electric	Power Tilt
225	E225DHXSCH	2008	90° V-6/200.1 cu in	25"	Blue	Remote	Electric	Power Tilt
225	E225DHXSCH	2008	90° V-6/200.1 cu in	25"	Blue	Remote	Electric	Power Tilt
225	E225DPLSUG	2007	90° V-6/200.1 cu in	20"	Blue	Remote	Electric	Power Tilt
225	E225DPLSUA	2007	90° V-6/200.1 cu in	20"	Blue	Remote	Electric	Power Tilt
225	E225DPXSUG	2007	90° V-6/200.1 cu in	25"	White	Remote	Electric	Power Tilt
225	E225DPXSUA	2007	90° V-6/200.1 cu in	25"	White	Remote	Electric	Power Tilt
225	E225DPZSUA	2007	90° V-6/200.1 cu in	30"	White	Remote	Electric	Power Tilt
225	E225DCXSUA	2007	90° V-6/200.1 cu in	25"	White	Remote	Electric	Power Tilt
225	E225DCZSUG	2007	90° V-6/200.1 cu in	30"	White	Remote	Electric	Power Tilt
225	E225DCZSUA	2007	90° V-6/200.1 cu in	30"	White	Remote	Electric	Power Tilt
225	E225DHLUG	2007	90° V-6/200.1 cu in	20"	Blue	Remote	Electric	Power Tilt
225	E225DHLUG	2007	90° V-6/200.1 cu in	20"	Blue	Remote	Electric	Power Tilt
225	E225DHLUG	2007	90° V-6/200.1 cu in	20"	Blue	Remote	Electric	Power Tilt
225	E225DHXSUG	2007	90° V-6/200.1 cu in	25"	Blue	Remote	Electric	Power Tilt
225	E225DHXSUR	2007	90° V-6/200.1 cu in	25"	Blue	Remote	Electric	Power Tilt
225	J225PX4SDR	2006	6 Cyl. / 220.0 cu in	25"	White	Remote	Electric	Power Tilt
225	BJ225X4SDC	2006	6 Cyl. / 220.0 cu in	25"	White	Remote	Electric	Power Tilt
225	J225CX4SDR	2006	6 Cyl. / 220.0 cu in	25"	White	Remote	Electric	Power Tilt
225	BJ225CX4DC	2006	6 Cyl. / 220.0 cu in	25"	White	Remote	Electric	Power Tilt
225	E225DPLSDR	2006	90° V-6/200.1 cu in	20"	Blue	Remote	Electric	Power Tilt
225	E225DPXSDR	2006	90° V-6/200.1 cu in	25"	White	Remote	Electric	Power Tilt
225	E225DPZSDR	2006	90° V-6/200.1 cu in	30"	White	Remote	Electric	Power Tilt
225	E225DCXSDR	2006	90° V-6/200.1 cu in	25"	White	Remote	Electric	Power Tilt
225	E225DCZSDR	2006	90° V-6/200.1 cu in	30"	White	Remote	Electric	Power Tilt
225	E225DHLSDF	2006	90° V-6/200.1 cu in	20"	Blue	Remote	Electric	Power Tilt
225	E225DHXSDF	2006	90° V-6/200.1 cu in	25"	Blue	Remote	Electric	Power Tilt
225	J225PX4SOC	2005	6 Cyl. / 220.0 cu in	25"	White	Remote	Electric	Power Tilt
225	BJ225X4SOS	2005	6 Cyl. / 220.0 cu in	25"	White	Remote	Electric	Power Tilt
225	J225PZ4SOS	2005	6 Cyl. / 220.0 cu in	30"	White	Remote	Electric	Power Tilt
225	J225CX4SOC	2005	6 Cyl. / 220.0 cu in	25"	White	Remote	Electric	Power Tilt
225	BJ225CX4SOS	2005	6 Cyl. / 220.0 cu in	25"	White	Remote	Electric	Power Tilt
225	J225CZ4SOS	2005	6 Cyl. / 220.0 cu in	30"	White	Remote	Electric	Power Tilt
225	E225DPLSOC	2005	90° V-6/200.1 cu in	20"	Blue	Remote	Electric	Power Tilt
225	E225DPXSOC	2005	90° V-6/200.1 cu in	25"	White	Remote	Electric	Power Tilt
225	E225DPZSOC	2005	90° V-6/200.1 cu in	30"	White	Remote	Electric	Power Tilt
225	E225DCXSOC	2005	90° V-6/200.1 cu in	25"	White	Remote	Electric	Power Tilt
225	E225DCZSOC	2005	90° V-6/200.1 cu in	30"	White	Remote	Electric	Power Tilt
225	E225DHLSOC	2005	90° V-6/200.1 cu in	20"	Blue	Remote	Electric	Power Tilt
225	E225DHLXOF	2005	90° V-6/200.1 cu in	20"	Blue	Remote	Electric	Power Tilt
225	E225DHLXOG	2005	90° V-6/200.1 cu in	20"	Blue	Remote	Electric	Power Tilt
225	E225DHLXOC	2005	90° V-6/200.1 cu in	25"	Blue	Remote	Electric	Power Tilt
225	E225DHLXOG	2005	90° V-6/200.1 cu in	25"	Blue	Remote	Electric	Power Tilt
250	E250DPXINS	2012	90° V-6/200.1 cu in	25"	White	Remote	Electric	Power Tilt
250	E250DPZINS	2012	90° V-6/200.1 cu in	30"	White	Remote	Electric	Power Tilt
250	E250DCXINS	2012	90° V-6/200.1 cu in	25"	White	Remote	Electric	Power Tilt
250	E250DCZINS	2012	90° V-6/200.1 cu in	30"	White	Remote	Electric	Power Tilt
250	DE250PXINR	2012	90° V-6/200.1 cu in	25"	White	Remote	Electric	Power Tilt
250	DE250PZINR	2012	90° V-6/200.1 cu in	30"	White	Remote	Electric	Power Tilt
250	DE250CXINR	2012	90° V-6/200.1 cu in	25"	White	Remote	Electric	Power Tilt
250	DE250CZINR	2012	90° V-6/200.1 cu in	30"	White	Remote	Electric	Power Tilt
250	E250HSLINA	2012	90° V-6/210 cu in	20"	White	Remote	Electric	Power Tilt
250	E250DHLINM	2012	90° V-6/210 cu in	20"	Blue	Remote	Electric	Power Tilt
250	E250DHXINM	2012	90° V-6/210 cu in	25"	Blue	Remote	Electric	Power Tilt
250	E250DPLIID	2011	90° V-6/200.1 cu in	20"	Blue	Remote	Electric	Power Tilt
250	E250DPXIID	2011	90° V-6/200.1 cu in	25"	White	Remote	Electric	Power Tilt
250	E250DPZIID	2011	90° V-6/200.1 cu in	30"	White	Remote	Electric	Power Tilt
250	E250DCXIID	2011	90° V-6/200.1 cu in	25"	White	Remote	Electric	Power Tilt
250	DE250PXIIC	2011	90° V-6/200.1 cu in	25"	White	Remote	Electric	Power Tilt
250	DE250PZIIC	2011	90° V-6/200.1 cu in	30"	White	Remote	Electric	Power Tilt
250	E250DCZIID	2011	90° V-6/200.1 cu in	30"	White	Remote	Electric	Power Tilt

Evinrude and Johnson Outboards 2005 - 2012

Horsepower	Model Number	Model Year	Engine	Shaft Length	Color	Steering	Starting	Midsection
250	E250DCZSUA	2007	90° V-6/200.1 cu in	30"	White	Remote	Electric	Power Tilt
250	E250DPLSDR	2006	90° V-6/200.1 cu in	25"	Blue	Remote	Electric	Power Tilt
250	E250DPXSDR	2006	90° V-6/200.1 cu in	25"	White	Remote	Electric	Power Tilt
250	E250DPZSDR	2006	90° V-6/200.1 cu in	30"	White	Remote	Electric	Power Tilt
250	E250DCXSDR	2006	90° V-6/200.1 cu in	25"	White	Remote	Electric	Power Tilt
250	E250DCZSDR	2006	90° V-6/200.1 cu in	30"	White	Remote	Electric	Power Tilt
250	J250PX4SOS	2005	6 Cyl. / 220.0 cu in	25"	White	Remote	Electric	Power Tilt
250	J250PZ4SOS	2005	6 Cyl. / 220.0 cu in	30"	White	Remote	Electric	Power Tilt
250	J250CX4SOS	2005	6 Cyl. / 220.0 cu in	25"	White	Remote	Electric	Power Tilt
250	J250CZ4SOS	2005	6 Cyl. / 220.0 cu in	30"	White	Remote	Electric	Power Tilt
250	E250DPLSOC	2005	90° V-6/200.1 cu in	20"	Blue	Remote	Electric	Power Tilt
250	E250DPXSOC	2005	90° V-6/200.1 cu in	25"	White	Remote	Electric	Power Tilt
250	E250DPZSOC	2005	90° V-6/200.1 cu in	30"	White	Remote	Electric	Power Tilt
250	E250DCXSOC	2005	90° V-6/200.1 cu in	25"	White	Remote	Electric	Power Tilt
250	E250DCZSOC	2005	90° V-6/200.1 cu in	30"	White	Remote	Electric	Power Tilt
300	E300DSLINA	2012	90° V-6/210 cu in	20"	White	Remote	Electric	Power Tilt
300	E300DPXINM	2012	90° V-6/210 cu in	25"	White	Remote	Electric	Power Tilt
300	E300DPZINM	2012	90° V-6/210 cu in	30"	White	Remote	Electric	Power Tilt
300	E300DCXINM	2012	90° V-6/210 cu in	25"	White	Remote	Electric	Power Tilt
300	E300DCZINM	2012	90° V-6/210 cu in	30"	White	Remote	Electric	Power Tilt
300	DE300PXINR	2012	90° V-6/210 cu in	25"	White	Remote	Electric	Power Tilt
300	DE300PZINR	2012	90° V-6/210 cu in	30"	White	Remote	Electric	Power Tilt
300	DE300CXINR	2012	90° V-6/210 cu in	25"	White	Remote	Electric	Power Tilt
300	DE300CZINR	2012	90° V-6/210 cu in	30"	White	Remote	Electric	Power Tilt
300	E300DSLIR	2011	90° V-6/210 cu in	20"	White	Remote	Electric	Power Tilt
300	E300DPXIIA	2011	90° V-6/210 cu in	25"	White	Remote	Electric	Power Tilt
300	E300DPZIIA	2011	90° V-6/210 cu in	30"	White	Remote	Electric	Power Tilt
300	E300DCXIIA	2011	90° V-6/210 cu in	25"	White	Remote	Electric	Power Tilt
300	E300DCZIIA	2011	90° V-6/210 cu in	30"	White	Remote	Electric	Power Tilt
300	DE300PXIIC	2011	90° V-6/210 cu in	25"	White	Remote	Electric	Power Tilt
300	DE300PZIIC	2011	90° V-6/210 cu in	30"	White	Remote	Electric	Power Tilt
300	DE300CXIIC	2011	90° V-6/210 cu in	25"	White	Remote	Electric	Power Tilt
300	DE300CZIIC	2011	90° V-6/210 cu in	30"	White	Remote	Electric	Power Tilt
300	E300DSLISC	2010	90° V-6/210 cu in	20"	White	Remote	Electric	Power Tilt
300	E300DSLISG	2010	90° V-6/210 cu in	20"	White	Remote	Electric	Power Tilt
300	E300DSLISF	2010	90° V-6/210 cu in	20"	White	Remote	Electric	Power Tilt
300	E300DPXISR	2010	90° V-6/210 cu in	25"	White	Remote	Electric	Power Tilt
300	E300DPXISG	2010	90° V-6/210 cu in	25"	White	Remote	Electric	Power Tilt
300	E300DPXISF	2010	90° V-6/210 cu in	25"	White	Remote	Electric	Power Tilt
300	E300DPZISR	2010	90° V-6/210 cu in	30"	White	Remote	Electric	Power Tilt
300	E300DPZISG	2010	90° V-6/210 cu in	30"	White	Remote	Electric	Power Tilt
300	E300DPZISF	2010	90° V-6/210 cu in	30"	White	Remote	Electric	Power Tilt
300	E300DCXISR	2010	90° V-6/210 cu in	25"	White	Remote	Electric	Power Tilt
300	E300DCXISG	2010	90° V-6/210 cu in	25"	White	Remote	Electric	Power Tilt
300	E300DCXISF	2010	90° V-6/210 cu in	25"	White	Remote	Electric	Power Tilt
300	E300DCZISR	2010	90° V-6/210 cu in	30"	White	Remote	Electric	Power Tilt
300	E300DCZISG	2010	90° V-6/210 cu in	30"	White	Remote	Electric	Power Tilt
300	E300DCZISF	2010	90° V-6/210 cu in	30"	White	Remote	Electric	Power Tilt
300	DE300PXISS	2010	90° V-6/210 cu in	25"	White	Remote	Electric	Power Tilt
300	DE300PXISG	2010	90° V-6/210 cu in	25"	White	Remote	Electric	Power Tilt
300	DE300PXISF	2010	90° V-6/210 cu in	25"	White	Remote	Electric	Power Tilt
300	DE300PZISS	2010	90° V-6/210 cu in	30"	White	Remote	Electric	Power Tilt
300	DE300PZISG	2010	90° V-6/210 cu in	30"	White	Remote	Electric	Power Tilt
300	DE300PZISF	2010	90° V-6/210 cu in	30"	White	Remote	Electric	Power Tilt
300	DE300CXISS	2010	90° V-6/210 cu in	25"	White	Remote	Electric	Power Tilt
300	DE300CXISG	2010	90° V-6/210 cu in	25"	White	Remote	Electric	Power Tilt
300	DE300CXISF	2010	90° V-6/210 cu in	25"	White	Remote	Electric	Power Tilt
300	DE300CZISS	2010	90° V-6/210 cu in	30"	White	Remote	Electric	Power Tilt
300	DE300CZISG	2010	90° V-6/210 cu in	30"	White	Remote	Electric	Power Tilt
300	DE300CZISF	2010	90° V-6/210 cu in	30"	White	Remote	Electric	Power Tilt
300	E300DPXSCS	2008	90° V-6/210 cu in	25"	White	Remote	Electric	Power Tilt
300	E300DPZSCS	2008	90° V-6/210 cu in	30"	White	Remote	Electric	Power Tilt
300	E300DCXSCS	2008	90° V-6/210 cu in	25"	White	Remote	Electric	Power Tilt
300	E300DCZSCS	2008	90° V-6/210 cu in	30"	White	Remote	Electric	Power Tilt



DSS11529

7/11