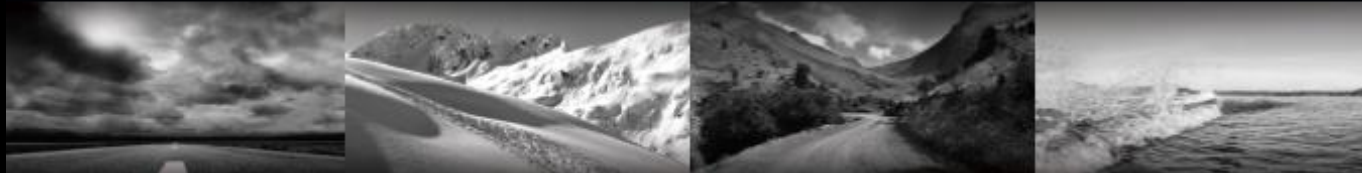




*ski-doo* *LYNX* *SEA-DOO* *ROTAX* *can-am*



# EXOME OPEN FACE HELMET

## USER GUIDE

USER GUIDE

# EXOME OPEN FACE

ENGLISH



# EXOME OPEN FACE Helmet

## CONGRATULATIONS!

You now have in your possession our newly designed Exome Open Face helmet. This Open Face helmet has been engineered to give you one of the best combinations of protection, lightweight, visibility and comfort. The incredible nature of the open face helmet allows you to easily spend a whole day without taking the helmet off at all!

It gives you comfort and lightweight. With the anti-scratch, interchangeable and retractable sun visor, you'll be sure to have extra protection when facing sunny days.

This helmet has also gone through rigorous testing and has passed even the most advanced DOT certification, so you can worry less about your helmet and truly focus on the adventure ahead.

You can feel secure in the knowledge that you now own a quality helmet that is designed to provide you safety and high standards of performance – in particular on long journeys – and that will give you a great deal of pleasure at the same time.

Please take the time to read through this manual carefully so that your helmet protects you properly when riding your vehicle. To ensure that you do not overlook any aspect of the manual that is relevant to your safety, we recommend that you read it in the order in which it appears.

### **WARNING**

This helmet complies with U.S. Federal Motor Vehicle Safety Standard 218 (DOT FMVSS 218). This helmet was not designed to be used by a child under 13.

We wish you a safe ride.



# CONTENTS


<b>A. GENERAL .....</b>	<b>4</b>
1. SAFETY INFORMATION	4
<b>B. THE HELMET .....</b>	<b>5</b>
1. ANATOMY OF THE HELMET	5
2. HELMET SIZING	5
3. MICROMETRIC CHIN STRAP	5
4. SUN VISOR	6
5. INNER LINER	7
6. VENTILATION SYSTEM	9
<b>C. FIT &amp; USAGE .....</b>	<b>10</b>
1. HOW TO PUT THE HELMET ON	10
2. PROPER FIT	10
3. PUT THE HELMET OFF	11
<b>D. BEFORE EVERY RIDE .....</b>	<b>11</b>
1. CHECKING THE HELMET	11
2. CHECKING THE CHINSTRAP	12
3. CHECKING THE SUN VISOR	12
<b>E. OTHER IMPORTANT INFORMATION .....</b>	<b>13</b>
1. MODIFICATIONS / ACCESSORIES	13
<b>F. CARE AND MAINTENANCE .....</b>	<b>13</b>
1. SHELL CLEANING	13
2. INTERIOR CLEANING	13
3. SUN VISOR	14
4. HELMET INSPECTION	14
5. HELMET STORAGE	14
<b>G. TROUBLESHOOTING GUIDE .....</b>	<b>15</b>
<b>H. ACCESSORIES AND SPARE PARTS .....</b>	<b>16</b>
1. ACCESSORIES	16
2. REPLACEMENT PARTS	16
<b>I. BRP SERVICE .....</b>	<b>16</b>
1. REPAIR SERVICE	16
2. LIMITED WARRANTY	16
<b>J. HOW TO CONTACT US .....</b>	<b>17</b>

## A. GENERAL

### 1. SAFETY INFORMATION

This helmet is backed by the BRP warranty and a network of authorized dealers and distributors ready to provide the parts, service, or accessories that you may require. Genuine BRP parts should be used for replacement to maintain the warranty, consult an authorized BRP dealer.

Use this User Guide to acquaint yourself with your new helmet and its various functions. Make sure you read and understand the contents of this guide and keep it for future reference. The information and components descriptions contained in this guide are accurate at time of publication. The illustrations in this document may not show the typical construction of the different assemblies or may not reproduce the full detail or exact shape of the parts shown, however, they represent parts which have the same or a similar function.

This guide uses the following safety alert symbol  in conjunction with signal words to indicate a potential personal injury hazard.

#### **WARNING**

Indicates a hazardous situation which, if not avoided, could result in death or serious injury.

#### **NOTICE**

Address practices not related to personal injury.

Simply reading this guide will not eliminate hazards. The user must understand and follow the instructions. Because of its ongoing commitment to product quality and innovation, BRP reserves the right at any time to discontinue or change specifications, designs, features, or equipment without incurring obligation. If anyone seeks to translate any portion of this guide into any language, this person must ensure that the translation is accurate.

#### **WARNING**

Riding a motorized vehicle can be extremely dangerous. This helmet provides limited protection to the head. It complies with U.S. Federal Motor Vehicle Safety Standard 218 (DOT FMVSS 218).

However, it will not protect the wearer against all possible impacts. Some impacts may exceed this helmet's capability to provide protection and result in serious head, brain, spinal, or other injury including paralysis or death. For maximum protection, the helmet must fit firmly on the head with the chin strap securely fastened.

If your helmet is equipped with a main visor, it must be fully closed. If your helmet is equipped with other component, such as wind deflector, breath deflector, breathing mask, mandible, etc., make sure to install them in proper position to direct exhaled breath away from the main visor. Always wear appropriate protection against frostbite, which may include a balaclava, neck tube, facemask, or combination of these items.

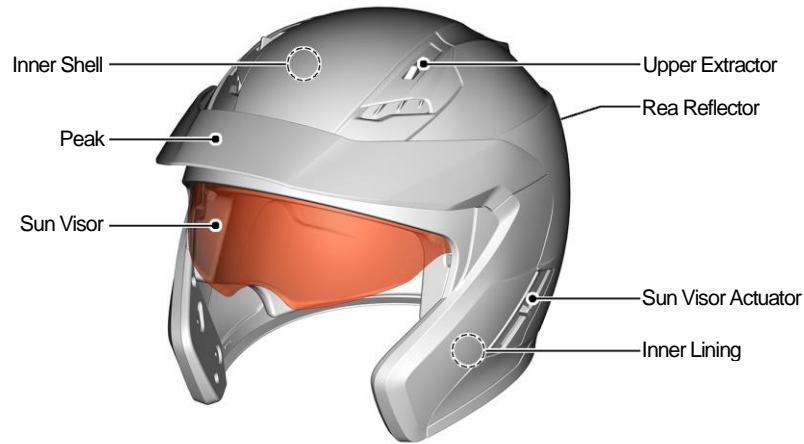
Inspect the helmet before each use following the inspection procedure in the instructions. Replace any part showing wear or damage. Do not alter the helmet or attach any items not recommended by the manufacturer. The helmet is designed to absorb shock by partial destruction of the shell and it should not be visible. Destroy and replace helmet if subjected liner, which may not be visible. Destroy and replace helmet if subjected to a severe blow even if it appears undamaged.

The helmet shell, liner and other components may be damaged and rendered ineffective by petroleum products, cleaning agents, paint, adhesives, etc., without the damage being visible. Use only warm mild soapy water to clean the helmet.

Follow all warnings and instructions provided with this helmet. For replacement instructions, contact BRP. Failure to follow all warnings and instructions can result in serious personal injury or death.

## B. THE HELMET

### 1. ANATOMY OF THE HELMET



### 2. HELMET SIZING

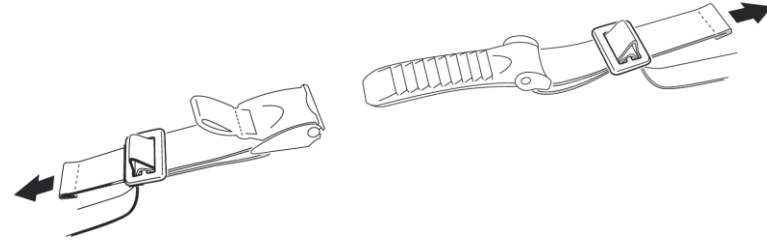
Helmet size		XS	S	M	L	XL	2XL	3XL
Shell size		S			L			
Head size	cm	53 - 54	55 - 56	57 - 58	59 - 60	61 - 62	63 - 64	65 - 66
	Inches	20 7/8 - 21 1/4	21 5/8 - 22	22 3/8 - 22 3/4	23 1/8 - 23 5/8	24 - 24 3/8	24 3/4 - 25 1/8	25 1/2 - 25 7/8

### 3. MICROMETRIC CHIN STRAP

The retention system of the EXOME helmet comes with a ratchet fastener. This locking system is easy to use and enables you to adjust the chinstrap perfectly to your head every time you put the helmet on.

#### ADJUSTING THE CHIN STRAP

The length of the chinstrap is adjusted by increasing or reducing the length of strap pulled through the metal buckles. Adjust the length of the chinstrap so that it fits firmly but comfortably under your chin and fix the end of the strap using the retaining loop with comfort pad.



#### ⚠ WARNING

When adjusting the strap, make sure that the helmet cannot be pulled off in a forward direction with the chinstrap closed.

#### ⚠ WARNING

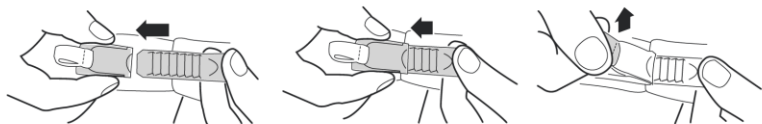
Check the adjustment of the chinstrap length at regular intervals.

## B. THE HELMET

### OPENING AND CLOSING

To close the chinstrap fastener, slide the ratchet tongue step by step into the locking buckle. If you find that the chinstrap fits too loosely around your chin, slide the ratchet tongue one step further into the locking buckle.

When adjusting the chinstrap, make sure that it rests firmly but not uncomfortably around your chin. To open the chinstrap, pull the red ribbon on the ratchet fastener upwards to release the locking buckle. Then pull the ratchet tongue out of the locking buckle.



#### **⚠ WARNING**

Never ride without making sure that the chinstrap is correctly fastened and adjusted and properly positioned. If the chinstrap is not correctly adjusted or fastened, the helmet could be displaced in the event of an accident.

#### **⚠ WARNING**

Closing the comfort pad of the chinstrap alone will not provide adequate protection. The chinstrap must always be fully fastened.

#### **⚠ WARNING**

Never open the chinstrap while riding.

## 4. SUN VISOR

### OPERATION

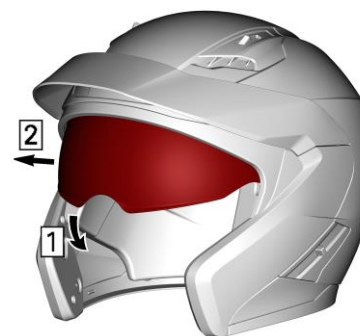
The sun visor is operated by the lever positioned on the left side of the helmet, which makes it easy to use even when wearing thick gloves.

Moving the lever upward lowers the sun visor, moving it downward retracts the sun visor inside the inner helmet shell and locks it in position.



### REMOVING THE SUN VISOR

1. Pivot the sun visor in the lower position.
2. Pull the sun visor downward until you see the upper edge.
3. Hold your helmet in position and pull the sun visor on the right side, toward the outside of the helmet.
4. Repeat steps 2-3 for the other side.



The sun visor lever should remain in the same position while you install the visor.

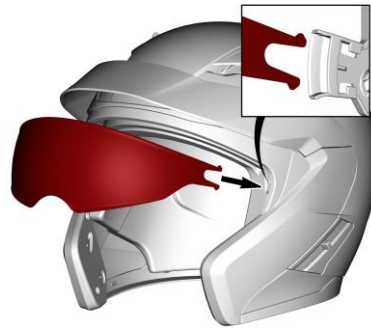
## B. THE HELMET

### INSTALLING THE SUN VISOR

1. Make sure the sun visor mechanism is in low position. (Sun visor lever up)



2. Insert the sun visor between helmet inner and outer shell and fit it on to the locating pegs on both sides.



Then, press firmly towards the inside of the helmet until the fork's inner insert is completely inserted.

3. Check that the sun visor mechanism is functioning correctly.



### 5. INNER LINER

The replaceable inner lining of the EXOME OPEN FACE helmet is washable and ensures both an excellent fit and improved ventilation of the helmet.

The dual-density cheek pads have a specific 3D shape to ensure that the helmet fits comfortably around the cheeks, and the headliner provides an optimal fit all around the head.

All interior fittings are made entirely of skin-friendly material. The material used for the cheek pads and head liner has been treated with an antimicrobial treatment.

When removing the lining, the cheek pads must first be detached before taking out the headliner pad. When fitting the lining, remember to insert the headband pad before the cheek pads.

### PAD SIZES

Helmet size	XS	S	M	L	XL	2XL	3XL	
Cheek pad thickness	45 mm	35 mm	30 mm	35 mm	35 mm	30 mm	20 mm	
Head liner thickness	Top	16 mm	16 mm	16 mm	16 mm	12 mm	12 mm	12 mm
	Crown	18 mm	16 mm	16 mm	18 mm	8 mm	6 mm	6 mm



## B. THE HELMET

### REMOVING THE CHEEK PADS

1. With the jaw in the open position, detach the Velcro™ and the 2 snaps by pulling the cheek pad towards the inside of the helmet.
2. Slide the chinstrap into the cheek pad notch.
3. Repeat these steps for the other side.



### INSTALLING THE CHEEK PADS

1. Before installing the cheek pads, identify the right and the left sides.
2. Fasten the 2 snaps and attach the Velcro™ upper part in position. Make sure the strap is in position inside the cheek pad notch.
3. Repeat these steps for the other side.



### REMOVING THE HEAD LINER

1. First, remove the rear portion of the head liner. The head liner is attached to the inner shell with 2 snaps (on each side of the neck) and a frontal portion, with 3 plastic strips.



2. Then you can remove the frontal portion by pulling the 3 plastic strips out carefully. For the frontal portion, start to pull from one side of the plastic strip.



## B. THE HELMET

### INSTALLING THE HEAD LINER

1. Insert the frontal plastic strip under the notches of the other plastic strip attached to the inner shell.



2. Next, position the head liner inside the helmet.

3. Then, fasten the 2 snaps on the neck portion.



#### **WARNING**

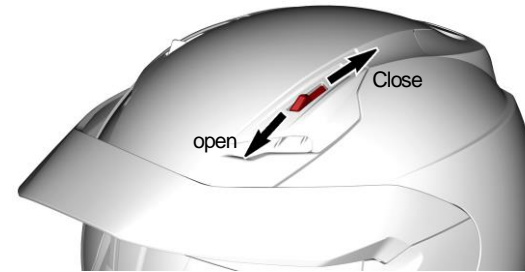
Never ride when parts of the inner lining have been removed.

To avoid damage to the inner lining and inner shell, do not hang the helmet over the mirrors or handlebar grips.

### 6. VENTILATION SYSTEM

The EXOME OPEN FACE helmet has a two-way adjustable ventilation system. As needed, you can modulate the air flow as per three distinct configurations:

1. The upper extractors are adjustable in 2 positions. They are either fully closed or fully open. When the sliding button is in the front position it corresponds to the fully closed mode and when the sliding button is in the rear position it corresponds to the fully open mode.



In all two cases, it allows you to increase or reduce the air flow to reach the desired level of comfort.

Note that the speed, the windshield, or the head rotation can affect the air flow inside the helmet.

## C. FIT & USAGE

### 1. HOW TO PUT THE HELMET ON

1. Make sure the sun visor is retracted into the helmet shell.
2. Open the chinstrap and chinstrap comfort pad.
3. Pull apart the lower ends of the chinstrap.
4. It will now be easy to put the helmet on.
5. Close and fasten the chinstrap.
6. Make sure the chinstrap passes under the chin and fits snugly.

### 2. PROPER FIT

#### **WARNING**

Wearing the wrong helmet size can increase the risk of serious injury or death in an accident. A helmet that is too large for your head may be dislodged or knocked off in an accident.

To select the right helmet size for your head, follow the steps:

#### 1. TRY ON THE HELMET

Grasp both chin straps to pull the helmet completely onto your head, ensuring that the top of your head is in contact with the top of the helmet interior. Try the helmet with all the protection you plan to use (balaclava, neck tube, etc.)

#### 2. CHECK FOR A PROPER FIT

To make sure that your helmet is the right size, check that:

- The helmet inner lining fits snugly around your head.
- The top pad presses firmly on your head.
- The cheek pads contact your cheeks.
- There is no space around your brow under the inner lining. Test this by trying to insert your fingers. If the helmet does not fit snugly, try on a smaller size.

This step might take several trials before finding the perfect adjustment.

#### 3. CHECK YOUR FIELD OF VISION

Some helmets may obstruct or block your vision when looking left, right, up, or down.

#### **WARNING**

Always make sure you can see well enough to safely operate your vehicle.

## C. FIT & USAGE

### 4. TEST THE HELMET FIT

Place your hands on each side of the helmet. While holding your head as motionless as possible, try rotating your helmet from left to right then up and down. You should feel the helmet move the skin on your head and face as you try to move the helmet.

If it is not the case or if you can feel the helmet padding sliding on your head, it is too big. If the helmet is constricting or painful, it is too small.



### 5. FASTEN THE CHIN STRAP

Tight it under your jaw until it remains no slack in the strap, and the strap must be tight up against your jaw.

### 6. TEST THE CHIN STRAP FIT

- Put your hands on the back of the helmet (B) and try to push the helmet off by rotating it forward.
- Put your hands on the front of the helmet above your forehead (or on the chin guard) and try to push.
- If helmet comes off, try another size or model.

Repeat steps 1 through 6 until you find a helmet that fits your head snugly and securely.

## C. FIT & USAGE

### 3. PUT THE HELMET OFF

1. Make sure the sun visor is retracted.
2. Open the chinstrap and chinstrap comfort pad.
3. Pull apart the lower ends of the chinstrap.
4. The helmet can now be removed easily.

To avoid scratching any objects you might place the helmet on, we recommend closing the chin-strap after you have taken the helmet off.

## D. BEFORE EVERY RIDE

### 1. CHECKING THE HELMET

Regularly inspect your helmet for damage. Small superficial scratches will not impair the protective function of your helmet.

#### **WARNING**

In the case of more serious damage (cracks, dents, flaking and cracking paint, etc.), the helmet should no longer be used.

## D. BEFORE EVERY RIDE

### 2. CHECKING THE CHINSTRAP

1. Check that the chinstrap passes under your chin.
2. Slip your index finger under the chinstrap and pull.  
If the chinstrap is loose under the chin, it is too long and needs to be tightened. If the chinstrap loosens when you pull it, it is not properly fastened. Undo the chinstrap completely and try fastening it again. Repeat the test.
3. If you are unable to fasten the chinstrap so that it fits firmly against the chin, check that your helmet is still the right size for you.

Repeat the test after each adjustment.

#### **WARNING**

Never ride with the chinstrap unfastened or incorrectly adjusted. The chinstrap should fit correctly and should not become loose when pulled. The fastener is not correctly closed if the chinstrap becomes loose when pulled.

### 3. CHECKING THE SUN VISOR

The protective film used during shipping should be removed before use.

Before every ride, check that the mechanism of sun visor is working properly and that the sun visor will provide sufficiently clear visibility. Any dirt should be removed before riding.

Check the sun visor for physical damage and cracks.  
A badly scratched sun visor will considerably impair your vision and should be replaced before setting off on a journey.

#### **WARNING**

Never use tinted sun visor in conditions of poor visibility, when riding at night or in a tunnel.

#### **WARNING**

A scratched and/or dirty sun visor will seriously impair visibility.  
For your own safety, replace it or clean it immediately.

#### **WARNING**

Make sure the sun visor is always in good condition.  
A damaged sun visor is not suitable for riding and needs to be replaced.

#### **WARNING**

Stop riding if visibility is poor.

## E. OTHER IMPORTANT INFORMATION

### 1. MODIFICATIONS / ACCESSORIES

#### WARNING

Original components (in particular on the outer shell, inner shell and restraint system) should not be altered or removed.

Remember that installing unapproved accessories or doing any helmet modification can reduce the protective effect, renders the certification, all warranty and insurance claims invalid.

Use only original parts, replacement parts and accessories that BRP has expressly approved for your helmet!

Modifying your helmet may reduce its ability to protect you and increase your risk of serious injury or death in an accident.

Modifications include the following:

- Drilling holes
- Cutting shell, strap or shock absorbing liner
- Pressing shock absorbing liner
- Modifying the retention system, including adding a chin cup
- Removing parts
- Painting
- Using adhesives
- Installing unapproved accessories

## F. CARE AND MAINTENANCE

#### WARNING

**Never use petroleum-based chemicals, solvents, gasoline, cleaning agents or adhesives** to clean the shell, liners or visors of your helmet. Your helmet shell, liner and visors may be seriously damaged by the use of such products and the full safety function of the helmet can then no longer be guaranteed.

### 1. SHELL CLEANING

To clean the helmet shell, you can use water, soap or one of the commonly available motorcycle shampoos, cleaners, polishes, plastic cleaners or cleaning fluids.

Using water and soap is usually sufficient. Make sure when using the other cleaning materials that these do not come into contact with the sun visor, since they can cause damage to the visor and its coating.

### 2. INTERIOR CLEANING

The inner lining of the EXOME OPEN FACE helmet can be removed completely.

The head and cheek pads can be washed by hand using a mild soap solution (e.g. with highly diluted standard mild detergent) at a maximum temperature of 30 °C.

Hand washing is recommended, but machine washing is also permitted. Use the "delicate" cycle to prevent the agitator from damaging the sweat-wicking material covering the liner parts. Allow the lining to dry at room temperature and with good ventilation.

#### WARNING

Do not place lining parts in the dryer: Excess heat may damage the foam and coverings.

## F. CARE AND MAINTENANCE

### 3. SUN VISOR

#### CLEANING THE SUN VISOR

The sun visor should only be cleaned with a soft and, if necessary, slightly damp cloth (we recommend a microfiber cloth).

Only use tepid water (< 20 °C) for cleaning. Never on any account clean the sun visor with petrol, solvent, a window or glass cleaner or other cleaning agents containing alcohol.

The sun visor should not be soaked in water even if it is very dirty on the outside, as this will severely reduce the surface hardness and thus the durability of the anti-fog/anti-scratch coating.

Never attach labels, adhesive tape or stickers to the sun visor.

Stubborn dirt on the outer surface of the sun visor (e.g. dried-on insect remains) can be easily removed by covering the closed visor with a moist or wet cloth and allowing the dirt to soften for around 30 minutes to 1 hour.

### 4. HELMET INSPECTION

Check for helmet damages. If your helmet is damaged or cracked, stop using it immediately and replace it.

Check for worn or damaged parts. Plastic components may wear out over time. If you find worn or damaged parts, replace them or purchase a new helmet. See "Replacement parts" for information on parts replacement.

#### **WARNING**

To reduce the risk of serious injury or death, always inspect your helmet before each ride.

The helmet should be replaced 3 to 5 years after the date of purchase, depending on use and care. Although the outer shell is in principle capable of a longer service life, the occurrence of material fatigue and wear to other components, as well as the overall action of the helmet and the unknown conditions in which the helmet has been used, make it advisable for your own safety to replace the helmet after this period of use.

Excessive heat (e.g. exhaust heat) can cause damage to the helmet esthetics, the inner shell of the helmet and the interior lining.

### 5. HELMET STORAGE

- Store helmet in a cool and dry place;
- Keep helmet away from pets and other animals;
- Keep helmet away from heat more than 50°C (122°F) and do not set on or near hot surfaces;
- Store helmet in a helmet bag.

#### **WARNING**

Improperly stored helmet can become damaged.

## G. TROUBLESHOOTING GUIDE

PROBLEM	ACTION
SUN VISOR MALFUNCTION	<ol style="list-style-type: none"><li data-bbox="449 293 1251 318">1. Check if the sun visor is installed and positioned correctly on the helmet.</li><li data-bbox="449 321 919 375">2. Check if there are any broken parts. Replace them by new ones if necessary.</li><li data-bbox="449 378 1451 402">3. If the problem is still not resolved, go to your authorized BRP dealer for detailed inspection.</li></ol>



## H. ACCESSORIES AND SPARE PARTS

You will find a summary of all available accessories and spare parts on internet at [www.brp.com](http://www.brp.com)

### WARNING

For safety reasons, all accessories should be approved by BRP for that specific helmet.

### WARNING

Use of replacement parts other than the ones offered by BRP may increase your risk of serious injury or death. Only use parts that are specifically designed to work with this helmet. BRP recommends that all replacement parts shall be installed by a BRP dealer.

### WARNING

Never modify your helmet – It may reduce your helmet's ability to protect you and increase your risk of serious injury or death.

## 1. ACCESSORIES

Original BRP accessories are available at your authorized BRP dealer. To find BRP dealers in your area, use the dealer search on the BRP website: [www.brp.com](http://www.brp.com)

## 2. REPLACEMENT PARTS

Original BRP parts are available at your authorized BRP dealer. To find BRP dealers in your area, use the dealer search on the BRP website: [www.brp.com](http://www.brp.com)

**Note:** For more information on available replacement parts, please visit our website at the following address: <http://store.ski-doo.com/>

## I. BRP SERVICE

### 1. REPAIR SERVICE

The EXOME OPEN FACE helmet is a BRP quality product that has been designed and manufactured using the latest development and production methods. If a repair to your helmet is necessary, please consult your authorized BRP dealer or distributor.

Upon receipt of a claim, BRP may examine the item and/or delay completion of the claim until the analysis is completed.

Even where a clear description of the original fault has been provided, if BRP discover further defaults during the repair, BRP may rectify these without a specific order if this is necessary to restore the correct functioning of the helmet.

### 2. LIMITED WARRANTY

Buying your helmet at an authorized BRP dealer provides a limited warranty for purchased equipment on manufacturing defects.

The limited warranty period is 4 years from the purchasing date. Should you have a reason to complain, please contact your authorized BRP dealer.

BRP ask that you provide a precise description of the claim as well as a copy of your receipt.

## J. HOW TO CONTACT US

### **North America**

565 de la Montagne Street  
Valcourt (Québec) J0E 2L0  
Canada

Sturtevant, Wisconsin, U.S.A.  
10101 Science Drive  
Sturtevant, Wisconsin  
53177  
U.S.A.

Sa De Cv, Av. Ferrocarril 202  
Parque Ind. Querétaro, Lote2-B  
76220  
Santa Rosa Jáuregui, Qro.  
Mexico

### **Oceania**

6 Lord Street  
Lakes Business Park  
Botany, NSW 2019  
Australia

### **South America**

Rua James Clerck Maxwell, 230  
TechnoPark Campinas  
SP 13069-380  
Brazil

### **Asia**

15/F Parale Mitsui Building,8  
Higashida-Cho, Kawasaki-ku  
Kawasaki 210-0005  
Japan

Room Dubai, level 12, Platinum  
Tower  
233 Tai Cang Road  
Xintiandi, Lu Wan District  
Shanghai 200

For your nearest authorized BRP dealer or distributor or for more information on BRP products, please visit our web site:

[www.brp.com](http://www.brp.com)

©™ and the BRP logo are trademarks of Bombardier Recreational Products inc. or its affiliates.

© 2024. Bombardier Recreational Products Inc.

BRP\_20240314\_R00EN

All other trademarks are the property of their respective owners.